

Concentric Vent Kit

CA007100

Date:

Submittal Data

Project #:

Engineer:

Project Name:

Prepared By:

Location:

Bid Date:

Contractor:

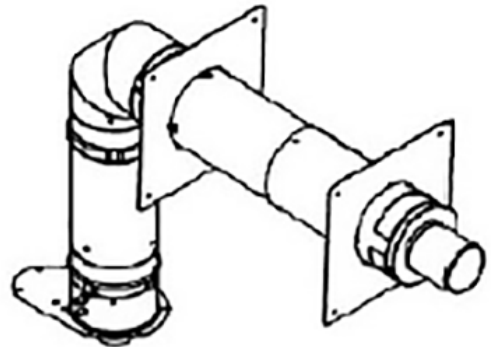
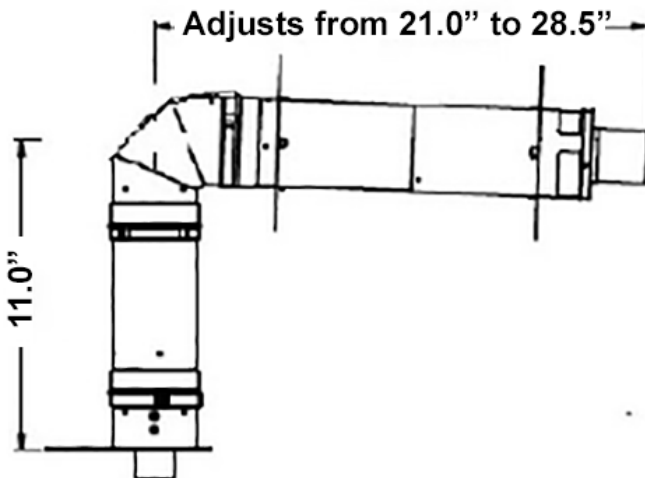
Standard Equipment

Kit contains:

- (1) boiler adapter with 2 test ports
- (1) 12" straight section
- (1) 90° elbow
- (1) 7"-14½" adjustable section
- (2) 10"x10" wall plates

Features

- Concentric vent system - one penetration serves both air and vent
- 3" UL1738 super-ferritic stainless steel .012" inside pipe
- 5" laser-welded, paintable, aluminized steel .018" outer pipe
- 18" vertical and 12"-28½" horizontal
- O-rings on inner and outer casing
- Twist-lock connection
- Adapter has two combustion test ports



Laars Heating Systems Company reserves the right to change specifications, components, features, or to discontinue products without notice.