

# Stratified Storage Tank

with Insulated Topcoat, Diffusers  
and Fittings for Heat Pump Systems

Model SHVDI30075XHSXXX



## Design

Storage tank is designed for heat pump systems.

Tank Features and Specifications:

- ASME Section IV HLW
- 125 psi Design Pressure
- Double Glass Interior Lining
- Exterior R-16 Insulation with Topcoat, for Indoor or Outdoor Use
- 180°F Maximum Operating Temperature
- Stainless Steel Diffuser Tubes
- Fitting Placement to Optimize Performance
- Five 1/2" NPT Thermowells for Demand Response System Sensors
- Magnesium Anodes
- Skirt Support

Date:

Project #:

Engineer:

Prepared By:

Bid Date:

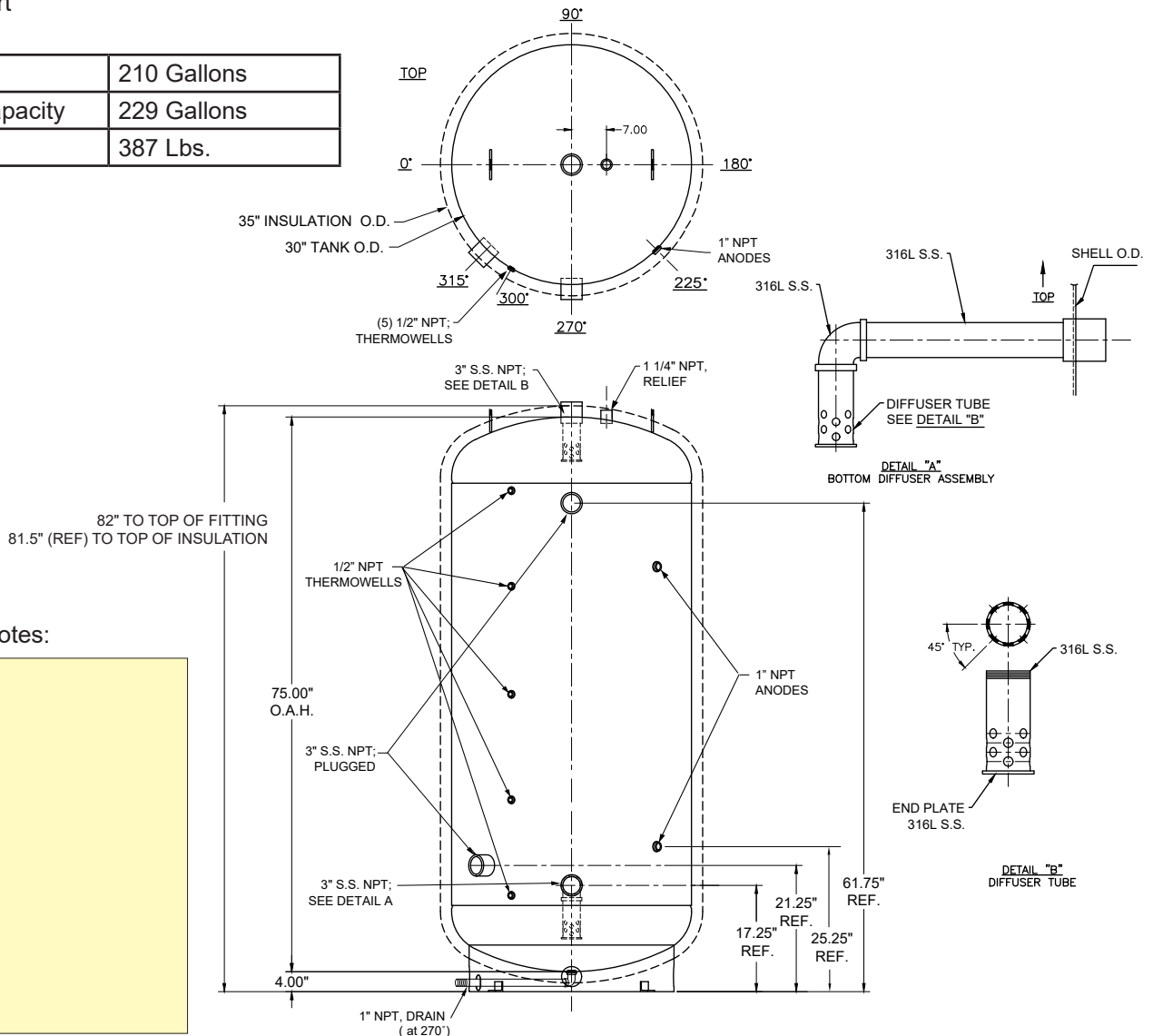
## Submittal Data

Project Name:

Location:

Contractor:

Capacity	210 Gallons
Nominal Capacity	229 Gallons
Weight	387 Lbs.



Additional Notes:



Customer Service and Product Support: 800.900.9276 • Fax 800.559.1583  
Headquarters: 20 Industrial Way, Rochester, NH, USA 03867 • 603.335.6300 • Fax 603.335.3355  
9 Bridgen Gate, Halton Hills, Ontario, Canada L7G 0A3 • 905.203.0600 • Fax 905.636.0666  
www.Laars.com

Litho in U.S.A. © Laars Heating Systems 24-09 Document 4287C

## Design

Storage tank is designed for heat pump systems.

Tank Features and Specifications:

- ASME Section IV HLW
- 125 psi Design Pressure
- Double Glass Interior Lining
- Exterior R-16 Insulation with Topcoat, for Indoor or Outdoor Use
- 180°F Maximum Operating Temperature
- Stainless Steel Diffuser Tubes
- Fitting Placement to Optimize Performance
- Five 1/2" NPT Thermowells for Demand Response System Sensors
- Magnesium Anodes
- Skirt Support

Capacity	320 Gallons
Nominal Capacity	340 Gallons
Weight	530 Lbs.

## Stratified Storage Tank

with Insulated Topcoat, Diffusers and Fittings for Heat Pump Systems

Model SHVDI30111XHSXXX



### Submittal Data

Date:

Project #:

Engineer:

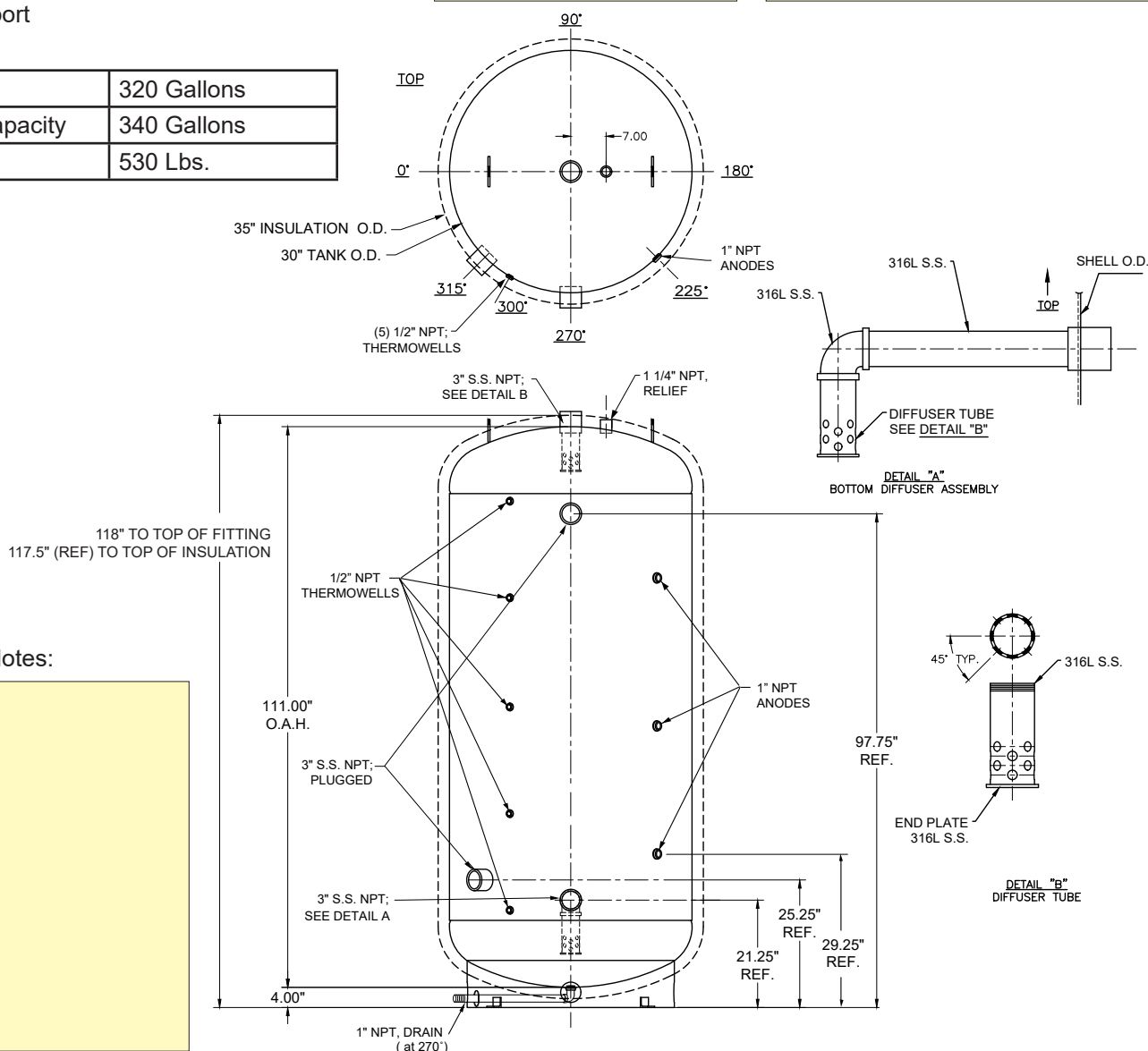
Prepared By:

Bid Date:

Project Name:

Location:

Contractor:



Additional Notes:



Customer Service and Product Support: 800.900.9276 • Fax 800.559.1583  
 Headquarters: 20 Industrial Way, Rochester, NH, USA 03867 • 603.335.6300 • Fax 603.335.3355  
 9 Brigden Gate, Halton Hills, Ontario, Canada L7G 0A3 • 905.203.0600 • Fax 905.636.0666  
[www.Laars.com](http://www.Laars.com)

Litho in U.S.A. © Laars Heating Systems 24-09 Document 4287C

# Stratified Storage Tank

with Insulated Topcoat, Diffusers  
and Fittings for Heat Pump Systems

Model SHVDI48073MHSXXX



## Design

Storage tank is designed for heat pump systems.

Tank Features and Specifications:

- ASME Section IV HLW
- 125 psi Design Pressure
- Double Glass Interior Lining
- Exterior R-16 Insulation with Topcoat, for Indoor or Outdoor Use
- 180°F Maximum Operating Temperature
- Stainless Steel Diffuser Tubes
- Fitting Placement to Optimize Performance
- Five 1/2" NPT Thermowells for Demand Response System Sensors
- 12" x 16" Manway
- Magnesium Anodes
- Skirt Support

Date:

Project #:

Engineer:

Prepared By:

Bid Date:

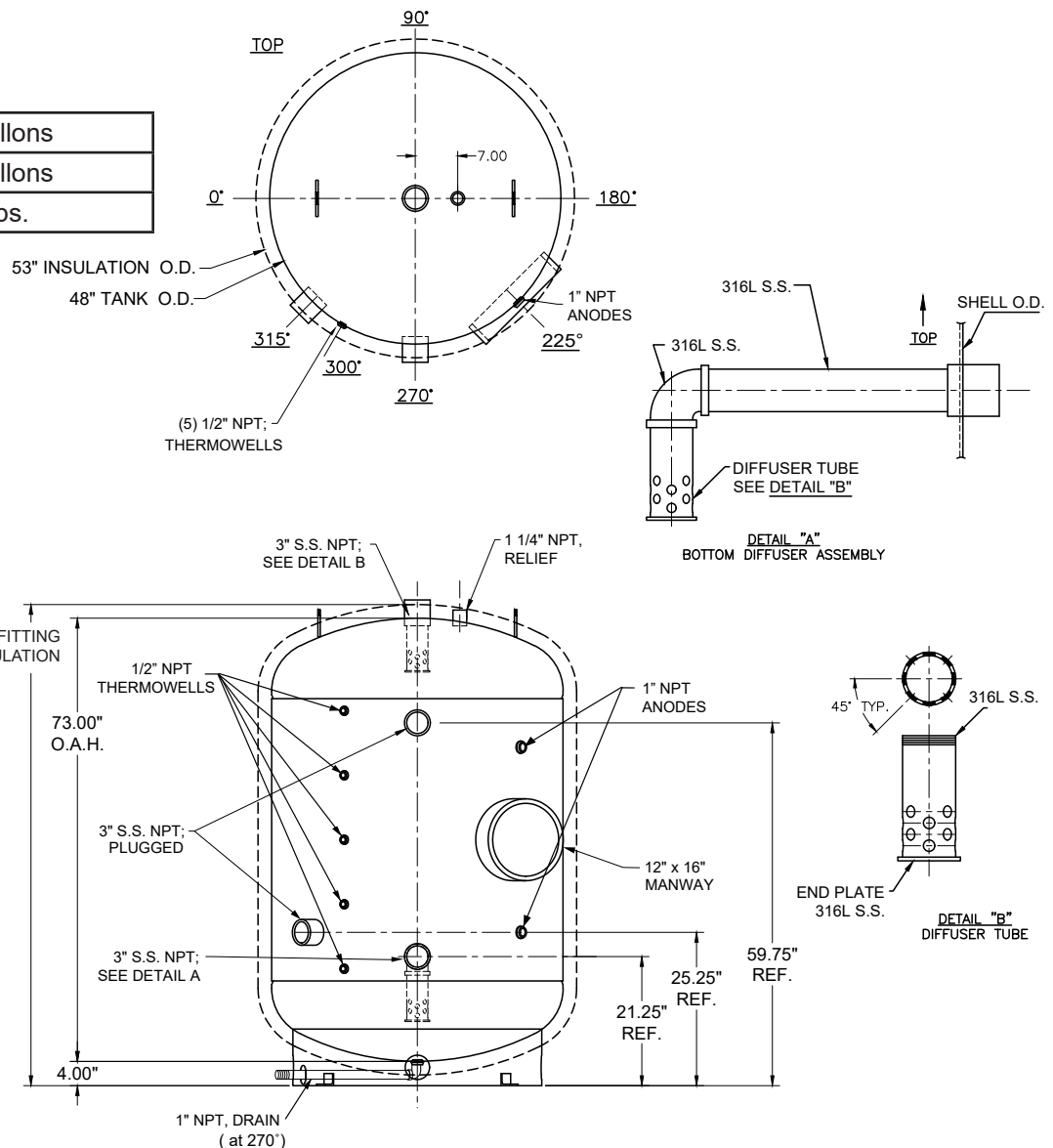
## Submittal Data

Project Name:

Location:

Contractor:

Capacity	500 Gallons
Nominal Capacity	572 Gallons
Weight	1038 Lbs.



Additional Notes:



Customer Service and Product Support: 800.900.9276 • Fax 800.559.1583  
Headquarters: 20 Industrial Way, Rochester, NH, USA 03867 • 603.335.6300 • Fax 603.335.3355  
9 Brigden Gate, Halton Hills, Ontario, Canada L7G 0A3 • 905.203.0600 • Fax 905.636.0666  
www.Laars.com  
Litho in U.S.A. © Laars Heating Systems 24-09 Document 4287C

## Design

Storage tank is designed for heat pump systems.

Tank Features and Specifications:

- ASME Section IV HLW
- 125 psi Design Pressure
- Double Glass Interior Lining
- Exterior R-16 Insulation with Topcoat, for Indoor or Outdoor Use
- 180°F Maximum Operating Temperature
- Stainless Steel Diffuser Tubes
- Fitting Placement to Optimize Performance
- Five 1/2" NPT Thermowells for Demand Response System Sensors
- 12" x 16" Manway
- Magnesium Anodes
- Skirt Support

Capacity	1000 Gallons
Nominal Capacity	1119 Gallons
Weight	1827 Lbs.

## Stratified Storage Tank

with Insulated Topcoat, Diffusers and Fittings for Heat Pump Systems

Model SHVDI54113MHSXXX



### Submittal Data

Date:

Project #:

Engineer:

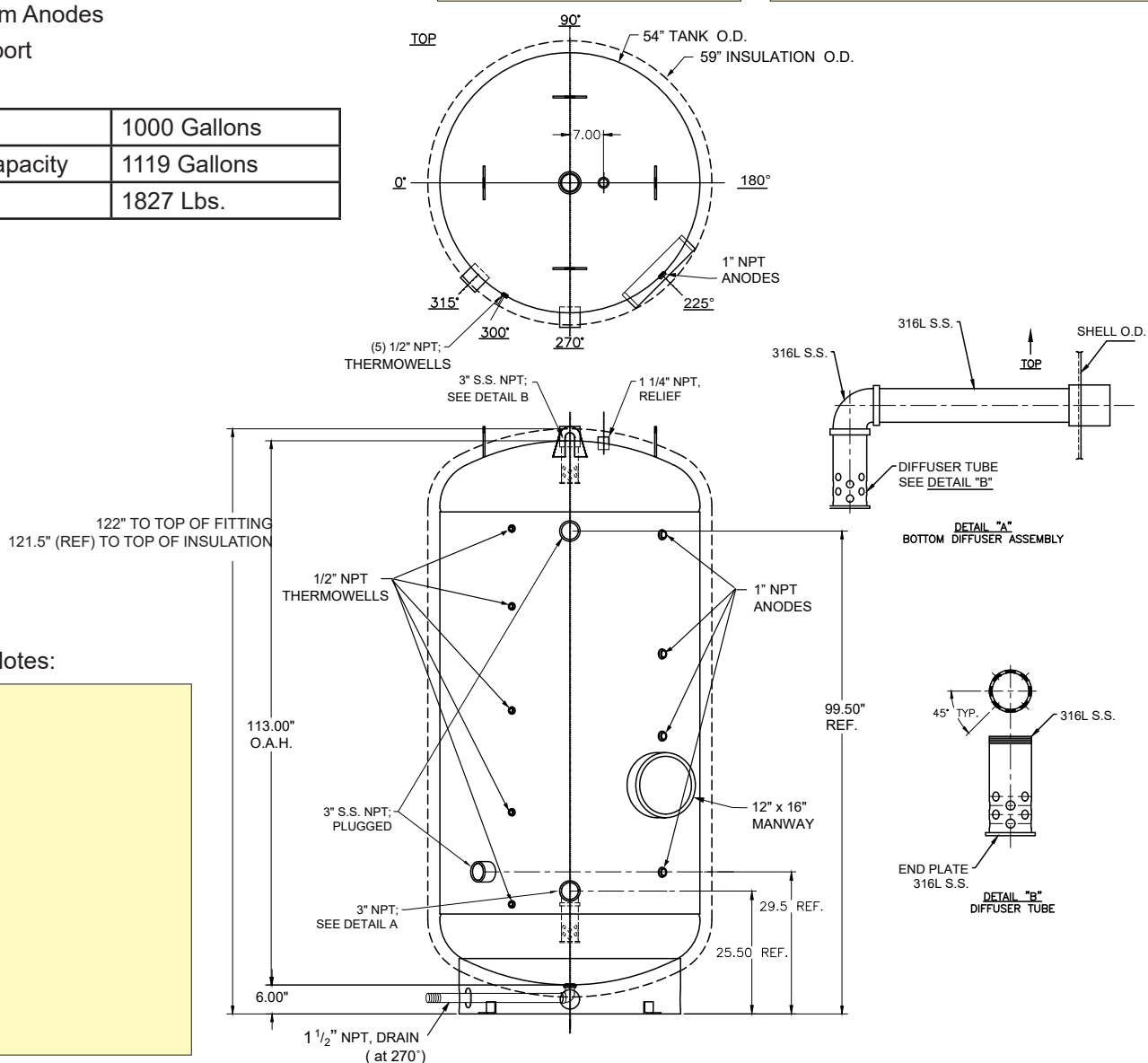
Prepared By:

Bid Date:

Project Name:

Location:

Contractor:



Additional Notes:



Customer Service and Product Support: 800.900.9276 • Fax 800.559.1583  
 Headquarters: 20 Industrial Way, Rochester, NH, USA 03867 • 603.335.6300 • Fax 603.335.3355  
 9 Brigden Gate, Halton Hills, Ontario, Canada L7G 0A3 • 905.203.0600 • Fax 905.636.0666  
[www.Laars.com](http://www.Laars.com) Litho in U.S.A. © Laars Heating Systems 24-09 Document 4287C