

























DESIGN NOTES	
Code	ASME VIII-Div 1
Design Pressure	125 psi
Capacity	1000 gallons
Weight	1957 lbs
Supports	Base Ring

MATERIAL SPECIFICATIONS	
<input type="checkbox"/>	Carbon steel with red oxide primer painted exterior
<input type="checkbox"/>	Carbon steel with R-16 insulating foam and topcoat
<input type="checkbox"/>	Duplex stainless steel, bare
<input type="checkbox"/>	Duplex stainless steel with R-16 insulating foam and topcoat
<input type="checkbox"/>	316L stainless steel, bare
<input type="checkbox"/>	316L stainless steel with R-16 insulating foam and topcoat

**OPTIONS**

- 150psi pressure rating
- Manway (12"x16")
- Hand hole (4"x6")

OPENINGS / HEIGHTS		
MARK	DIM.	REFERENCE
A	145"	Overall Height*
B	141"	Tank Height
C	124 1/4"	Connection Height
D	48"	Diameter*
E	1" NPT	Drain
F	6"	Flanges

\*Foam / topcoat thickness is approximately 2 1/4"

**NOTES**

---



---



---



---



---



---



---



---

**PROJECT**

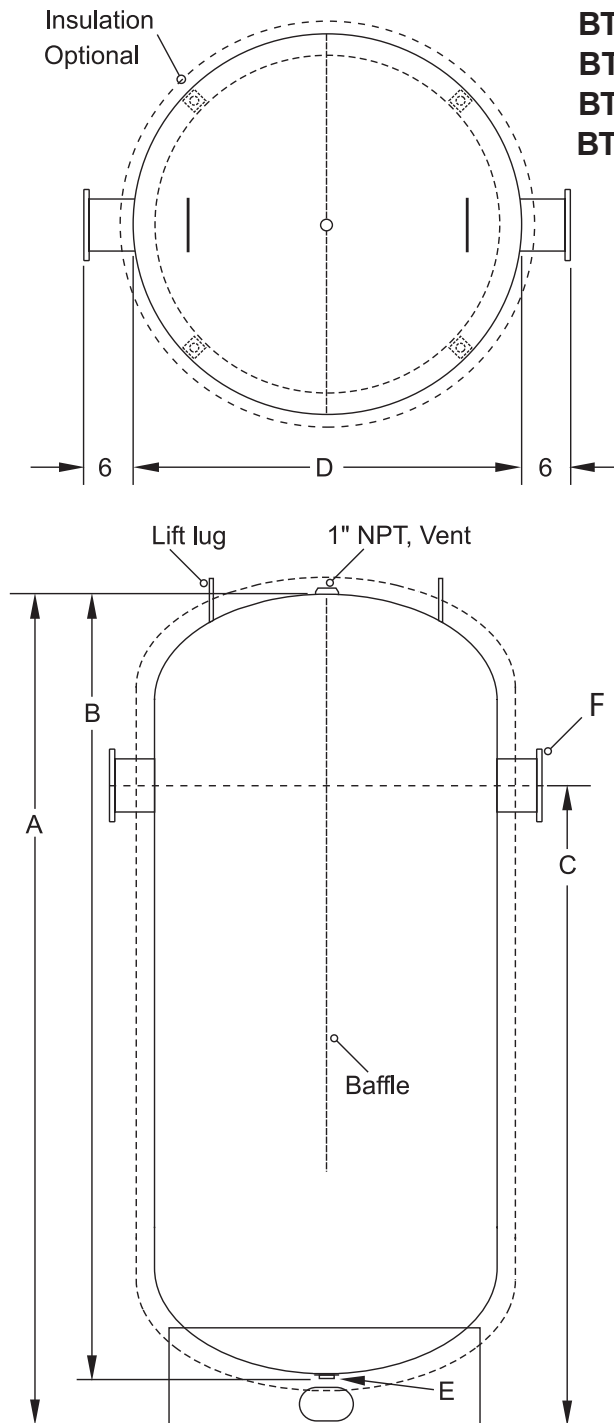
Customer	
Scale	Not to Scale
Date	
Customer P.O. #	

# Chilled Water Buffer Tank

**Submittal Data**

**Vertical Models**

- BTV NB 48141**
- BTV NI 48141**
- BTV 2 B 48141**
- BTV 2 I 48141**
- BTV 3 B 48141**
- BTV 3 I 48141**



**International Sales**  
 9 Brigden Gate, Halton Hills, Ontario, Canada  
 L7G 0A3 (905)203-0600 Fax: (905) 636-0666

**Headquarters**  
 20 Industrial Way, Rochester, NH 03867  
**Sales, Service**  
 800.900.9276 • Fax 800-559-1583  
**Applications Engineering**  
 603.335.6300 • Fax 603.335.3355  
[www.Laars.com](http://www.Laars.com)













