

# **LAARS<sup>®</sup> LT SERIES**

## **Tankless Water Heater Commercial Selection Guide**






**HIGH EFFICIENCY  
COMMERCIAL WATER HEATING**




**LAARS<sup>®</sup>**   
**Heating Systems Company**  
***Built to be the Best<sup>®</sup>***

# LAARS® LT SERIES

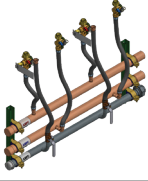
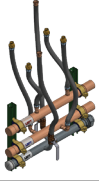
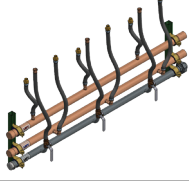
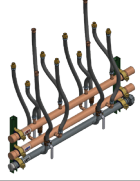
## ACCESSORY LIST

			
Non return valve kit for PVC or CPVC common venting	Base Rack (for back-to-back or in-line mounting)	Extension Rack (for back-to-back or in-line mounting)	Cascade Cable (requires 1 per unit)
Part #ST1253 *	Part #ST1249	Part #ST1250	Part #FT1861 *

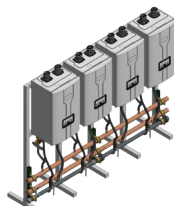
  

			<p>* Non return valve kit (ST1253) is required only when common venting with PVC or CPVC material. Polypropylene common venting kit includes NRV component.</p> <p>* Non return valve kit (ST1253) and Cascade cable (FT1861) is required one kit per one heater.</p>
Outdoor Vent Kit	Condensate Neutralizer	Complete Parts Kit for LT Series models	
Part #ST1238	Part #A2123601	Part #ST1221	

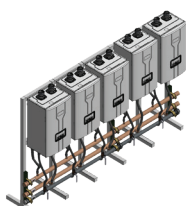
## CASCADE PIPING MANIFOLDS

			
2 Units Side-by-Side	2 Units Back-to-Back	3 Units Side-by-Side	4 Units Back-to-Back
Part #P2151900	Part #P2152000	Part #P2152100	Part #P2152200

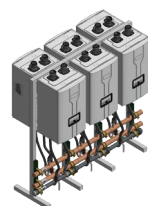
## EXAMPLES OF CONFIGURATIONS & KITS



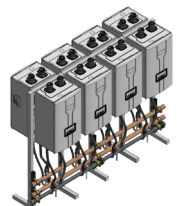
**4 UNIT**  
Side-by-Side



**5 UNIT**  
Side-by-Side



**6 UNIT**  
Back to Back



**8 UNIT**  
Back to Back

Find Rebates &  
Tax credits at  
**LAARS.COM**



### Rebates Available!

Don't forget to submit for your rebate today!

# THE NEXT LEVEL IN TANKLESS INNOVATION

## LT SERIES FIELD SERVICE KIT

The LT Series tankless water heater field service kit is specifically designed for easy response to annual or emergency service calls.

Laars wants to be sure you are prepared, so we offer all the requisite components for the LT Series tankless water heater from the main control and user interface to sensors, water valve and gas valve.

Part Number ..... ST1221



PART #	DESCRIPTION	QTY
ST1227	Air Intake Filter Assembly	1
ST1006	Ignition Transformer	1
ST1144	Air Pressure Switch	1
ST1140	Control Display (PR-922C)	1
ST1141	Control Display (PR-952C)	1
ST1139	Printed Circuit Board	1
ST1228	DHW Temperature Sensor Assembly	2
ST1024	Recirculation Return Filter	2
ST1103	Return Connection Assembly	2
ST1229	Cold Water Temperature Sensor Assembly	2
ST1105	Flow Control Valve Assembly	1

PART #	DESCRIPTION	QTY
ST1054	Star Clip (small)	10
ST1230	Hot Water Temperature Sensor Assembly	2
ST1110	Circulation Pump Assembly	1
ST1232	Water Mixing Valve Assembly	1
ST1233	Recirculation Flow Sensor Assembly	1
ST1166	Star Clip (large)	10
ST1120	Blower Assembly	1
ST1122	Gas Valve Assembly	1
ST1204	Ignition Rod Assembly	1
ST1327	Flame Detector Sensor	2
ST1213	Screw (M4x12 TH T/S)	10

Find Rebates &  
Tax credits at  
**LAARS.COM**



## INTELLIGENT WATER HEATING

# TANKLESS WATER HEATER

## COMMON VENT LENGTH

REQUIRED LOAD (TOTAL BTU/H)	NUMBER OF UNITS	TOTAL LENGTH (FT)			
		3"	4"	6"	8"
399,800	2	60	106	200	-
599,700	3	30	71	160	-
799,600	4	-	53	120	-
999,500	5	-	-	96	150
1,199,400	6	-	-	80	142
1,393,300	7	-	-	68	121
1,599,200	8	-	-	60	106

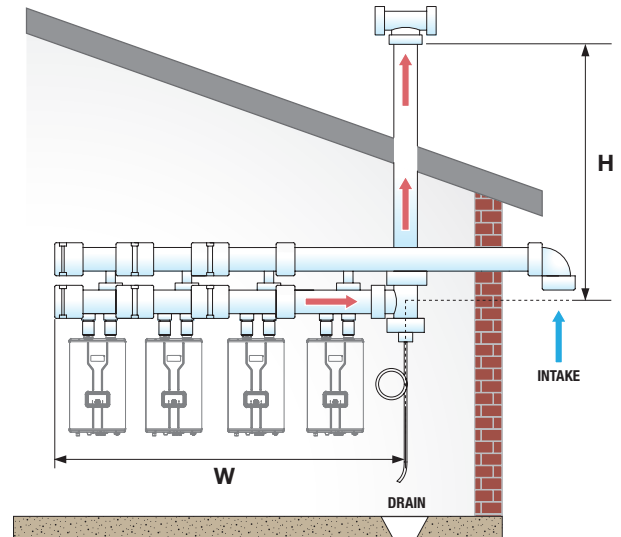
Common Vent Length Table (Total Length (L) = W + H)

Note: Every 90° elbow used is equivalent to 8 linear feet (2.4m) of vent length.

Determining the Length of a Common Venting System:

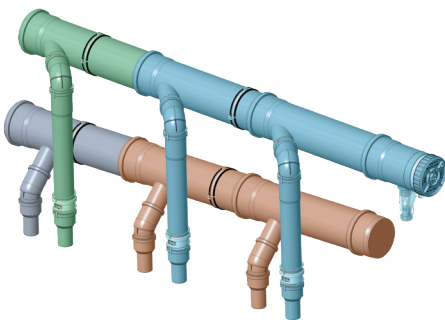
1. Add the BTU/H input ratings for each unit in the cascading system to determine the total length (L) of the total BTU/H rating.
2. Determine the total length (L) of the common vent, which consists of the horizontal width (W) and the vertical height (H):

Total length (L) = W + H.



LT Standard  
Manual

## POLYPROPYLENE COMMON VENTING ACCESSORY: SIDE-BY-SIDE



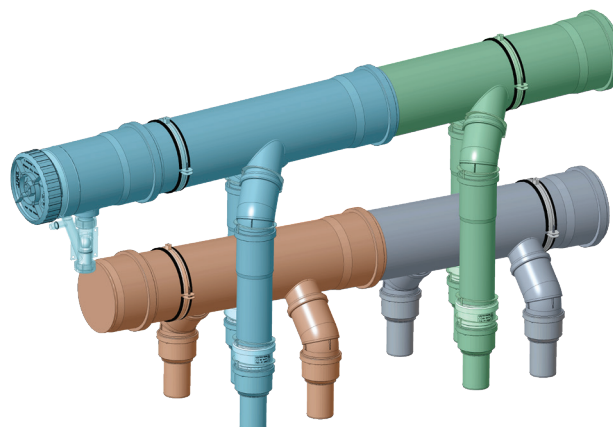
- EXHAUST STARTER
- EXHAUST EXTENSION
- INTAKE STARTER
- INTAKE EXTENSION

PART NUMBER	DIAMETER & TYPE	DESCRIPTION	
D2024100	4" Exhaust Side-by-Side	Starter	Connects 2 heaters
D2024200	4" Exhaust Side-by-Side	Extension	Add 1 heater
D2024300	4" Intake Side-by-Side	Starter	Connects 2 heaters
D2024400	4" Intake Side-by-Side	Extension	Add 1 heater
D2024900	6" Exhaust Side-by-Side	Starter	Connects 2 heaters
D2025000	6" Exhaust Side-by-Side	Extension	Add 1 heater
D2025100	6" Intake Side-by-Side	Starter	Connects 2 heaters
D2025200	6" Intake Side-by-Side	Extension	Add 1 heater
D2025700	8" Exhaust Side-by-Side	Starter	Connects 2 heaters
D2025800	8" Exhaust Side-by-Side	Extension	Add 1 heater
D2025900	8" Intake Side-by-Side	Starter	Connects 2 heaters
D2026000	8" Intake Side-by-Side	Extension	Add 1 heater

# COMMERCIAL SELECTION GUIDE

## POLYPROPYLENE COMMON VENTING ACCESSORY: BACK-TO-BACK

- EXHAUST STARTER
- EXHAUST EXTENSION
- INTAKE STARTER
- INTAKE EXTENSION



PART NUMBER	DIAMETER & TYPE	DESCRIPTION	
D2023700	4" Exhaust Back-to-Back	Starter	Connects 2 heaters
D2023800	4" Exhaust Back-to-Back	Extension	Add 1 heater
D2023900	4" Intake Back-to-Back	Starter	Connects 2 heaters
D2024000	4" Intake Back-to-Back	Extension	Add 1 heater
D2024500	6" Exhaust Back-to-Back	Starter	Connects 2 heaters
D2024600	6" Exhaust Back-to-Back	Extension	Add 1 heater
D2024700	6" Intake Back-to-Back	Starter	Connects 2 heaters
D2024800	6" Intake Back-to-Back	Extension	Add 1 heater
D2025300	8" Exhaust Back-to-Back	Starter	Connects 2 heaters
D2025400	8" Exhaust Back-to-Back	Extension	Add 1 heater
D2025500	8" Intake Back-to-Back	Starter	Connects 2 heaters
D2025600	8" Intake Back-to-Back	Extension	Add 1 heater



RightSpec®



LT Recirc  
Parts List



LT Standard  
Parts List



LT Recirc  
Installation  
Manual



LT Standard  
Installation  
Manual



Application  
Manual



LT Recirc  
Cascade  
Manual



LT Standard  
Cascade  
Manual



Commercial  
Accessories  
Brochure





**WWW.LAARS.COM**



Browse Laars  
LT Series

**LAARS**<sup>®</sup>  
Heating Systems Company

**Customer Service and Product Support:** 800.900.9276 • Fax 800.559.1583

**Headquarters:** 20 Industrial Way, Rochester, NH 03867 • 603.335.6300 • Fax 603.335.3355  
9 Brigden Gate, Halton Hills, Ontario, Canada, L7G 0A3 • 905.203.0600 • Fax 905.636.0666

**www.LAARS.com**