

DESIGN NOTES

Code	ASME Sec IV HLW
Design Pressure	125 psi
Test Pressure	125 psi
Heads	3/16" 414G
Shell	10 Gauge 414G
Interior	Ultonium Glass Lining
Insulation	2" High Density Foam, 12.5 R
Exterior	Baked Enamel Steel Jacket
Capacity	175 gallons / 193 nominal
Tare Weight	470 lbs.
Support	Saddles

MATERIAL SPECIFICATIONS

Heads	Carbon Steel
Shell	Carbon Steel
Couplings	Carbon Steel
Flanges	
Jacket	24 Gauge Steel
Manway	
Lining	Ultonium Glass

OPENINGS / HEIGHTS

MARK	SIZE	SERVICE
A	67"	Overall Length
B	18"	Circulation
C	18"	Supports
D	34"	Diameter
E	26.38"	Support Width
F	41"	Height
	1"	Drain

WARRANTY**FIRST THROUGH FIVE YEAR – LIMITED WARRANTY:**

Laars warrants the lined steel tank for leakage caused by defects in materials and /or workmanship for five years from date of installation. If the tank is found to be defective in manufacture, Laars will provide replacement of tank.

ONE YEAR – LIMITED WARRANTY:

Laars warrants parts to be free from manufacturing defects in material and workmanship for one year from date of installation. If parts are found to be defective, Laars will provide replacement of parts.

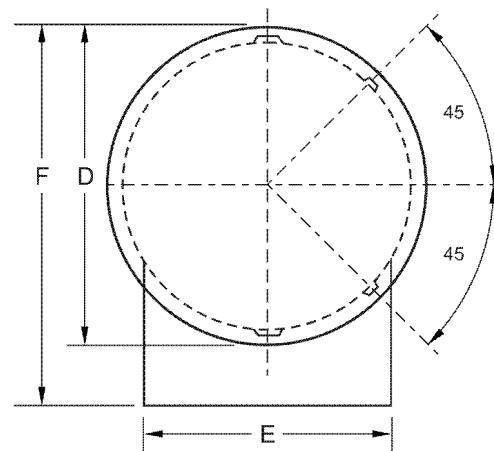
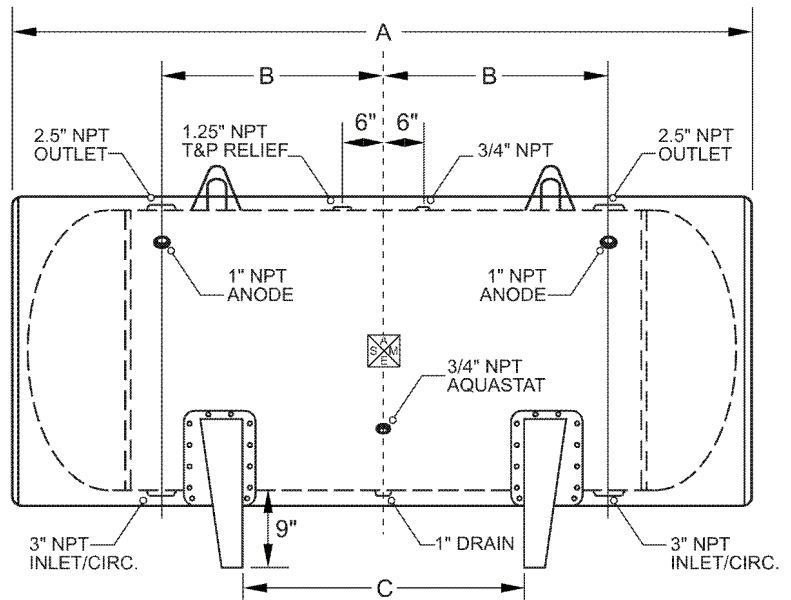
PROJECT

Customer	
Scale	Not to Scale
Date	
Customer P.O. #	
Drawing Number	JH-30-063

Horizontal Storage Tank

Size: 30-063

Submittal Data



LAARS
Heating Systems Company
A subsidiary of BRADFORD WHITE Corporation

International Sales
1869 Sismet Road, Mississauga
Ontario, Canada L4W 1W8
905.238.0100 • Fax 905.366.0130

Headquarters
20 Industrial Way, Rochester, NH 03867
Customer Service, Service Advisors
800.900.9276 • Fax 800.559.1583

Technical Support
603.335.6300 • Fax 603.335.3355

www.Laars.com
Litho in U.S.A. © Laars Heating Systems 1405 Doc. 4224C-1

DESIGN NOTES

Code	ASME Sec IV HLW
Design Pressure	125 psi
Test Pressure	125 psi
Heads	3/16" 414G
Shell	10 Gauge 414G
Interior	Ultonium Glass Lining
Insulation	2" High Density Foam, 12.5 R
Exterior	Baked Enamel Steel Jacket
Capacity	210 gallons / 229 nominal
Tare Weight	622 lbs.
Support	Saddles

MATERIAL SPECIFICATIONS

Heads	Carbon Steel
Shell	Carbon Steel
Couplings	Carbon Steel
Flanges	
Jacket	24 Gauge Steel
Manway	
Lining	Ultonium Glass

OPENINGS / HEIGHTS

MARK	SIZE	SERVICE
A	79"	Overall Length
B	24"	Circulation
C	24"	Supports
D	34"	Diameter
E	26.38"	Support Width
F	41"	Height
	1"	Drain

WARRANTY**FIRST THROUGH FIVE YEAR – LIMITED WARRANTY:**

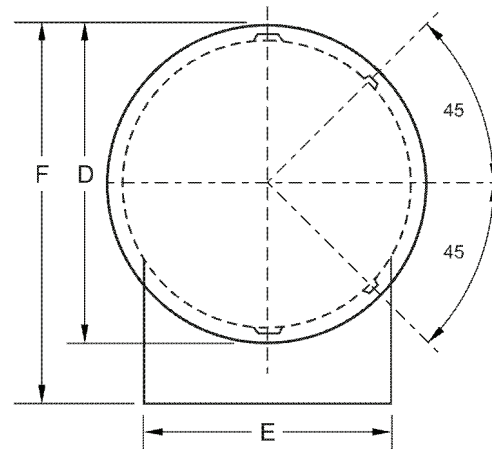
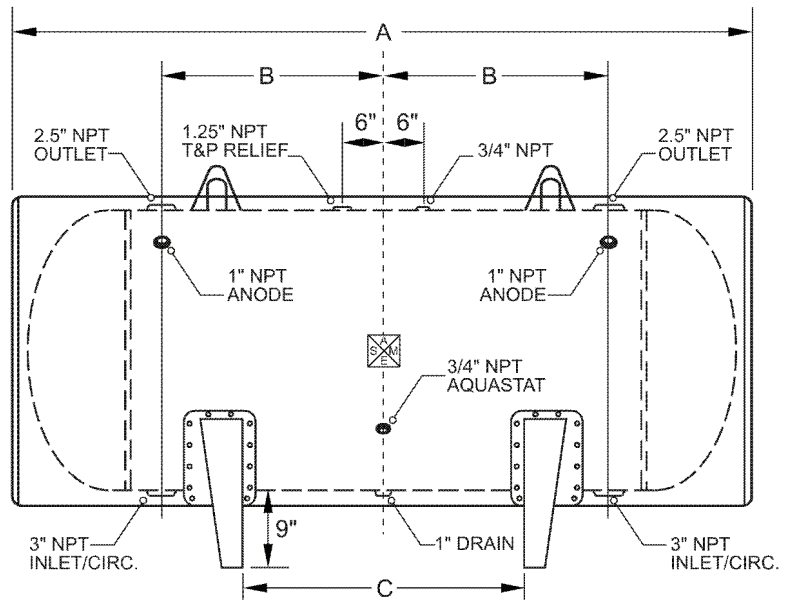
Laars warrants the lined steel tank for leakage caused by defects in materials and /or workmanship for five years from date of installation. If the tank is found to be defective in manufacture, Laars will provide replacement of tank.

ONE YEAR – LIMITED WARRANTY: Laars warrants parts to be free from manufacturing defects in material and workmanship for one year from date of installation. If parts are found to be defective, Laars will provide replacement of parts.

PROJECT

Customer	
Scale	Not to Scale
Date	
Customer P.O. #	
Drawing Number	JH-30-075

Horizontal Storage Tank

Size: 30-075
Submittal Data


LAARS
Heating Systems Company
 A subsidiary of **BRADFORD WHITE** Corporation
International Sales
 1869 Sismet Road, Mississauga
 Ontario, Canada L4W 1W8
 905.238.0100 • Fax 905.366.0130

Headquarters
 20 Industrial Way, Rochester, NH 03867
Customer Service, Service Advisors
 800.900.9276 • Fax 800.559.1583

Technical Support
 603.335.6300 • Fax 603.335.3355

www.Laars.com
 Litho in U.S.A. © Laars Heating Systems 1405 Doc. 4224C-2

DESIGN NOTES

Code	ASME Sec IV HLW
Design Pressure	125 psi
Test Pressure	125 psi
Heads	3/16" 414G
Shell	3/16" 516 Grade 70
Interior	Ultonium Glass Lining
Insulation	2" High Density Foam, 12.5 R
Exterior	Baked Enamel Steel Jacket
Capacity	240 gallons / 260 nominal
Tare Weight	755 lbs.
Support	Saddles

MATERIAL SPECIFICATIONS

Heads	Carbon Steel
Shell	Carbon Steel
Couplings	Carbon Steel
Flanges	
Jacket	24 Gauge Steel
Manway	
Lining	Ultonium Glass

OPENINGS / HEIGHTS

MARK	SIZE	SERVICE
A	89"	Overall Length
B	29"	Circulation
C	34"	Supports
D	34"	Diameter
E	26.38"	Support Width
F	41"	Height
	1"	Drain

WARRANTY**FIRST THROUGH FIVE YEAR – LIMITED WARRANTY:**

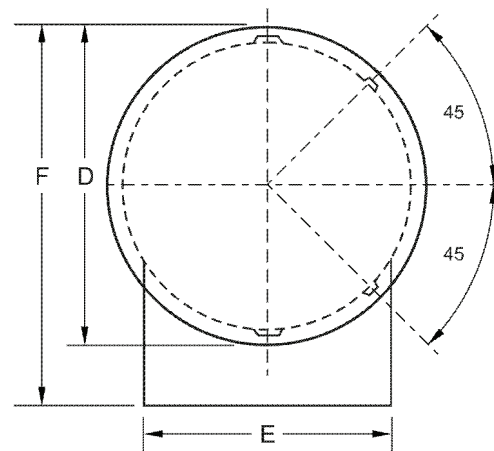
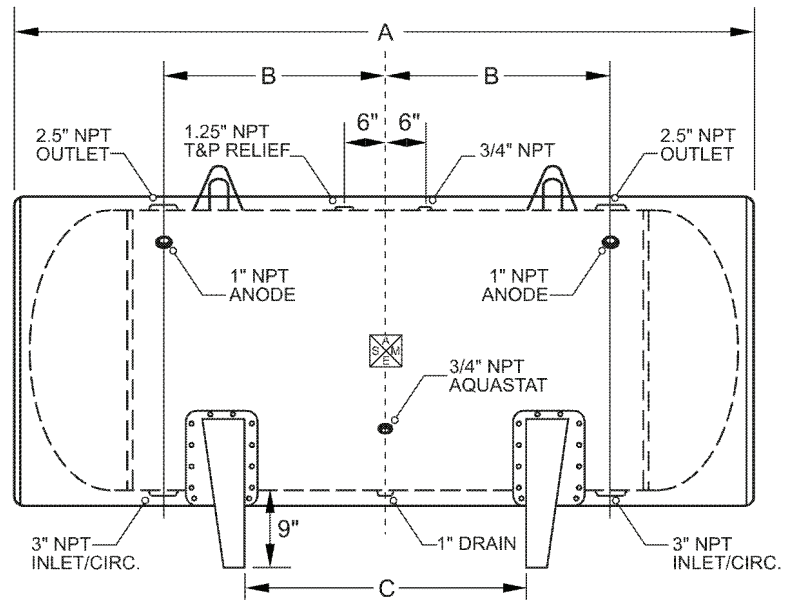
Laars warrants the lined steel tank for leakage caused by defects in materials and /or workmanship for five years from date of installation. If the tank is found to be defective in manufacture, Laars will provide replacement of tank.

ONE YEAR – LIMITED WARRANTY: Laars warrants parts to be free from manufacturing defects in material and workmanship for one year from date of installation. If parts are found to be defective, Laars will provide replacement of parts.

PROJECT

Customer	
Scale	Not to Scale
Date	
Customer P.O. #	
Drawing Number	JH-30-085

Horizontal Storage Tank

Size: 30-085
Submittal Data


LAARS
Heating Systems Company
 A subsidiary of **BRADFORD WHITE** Corporation
International Sales
 1869 Sismet Road, Mississauga
 Ontario, Canada L4W 1W8
 905.238.0100 • Fax 905.366.0130

Headquarters
 20 Industrial Way, Rochester, NH 03867
Customer Service, Service Advisors
 800.900.9276 • Fax 800.559.1583

Technical Support
 603.335.6300 • Fax 603.335.3355

www.Laars.com
 Litho in U.S.A. © Laars Heating Systems 1405 Doc. 4224C-3

DESIGN NOTES

Code	ASME Sec IV HLW
Design Pressure	125 psi
Test Pressure	125 psi
Heads	3/16" 414G
Shell	10 Gauge 414G
Interior	Ultonium Glass Lining
Insulation	2" High Density Foam, 12.5 R
Exterior	Baked Enamel Steel Jacket
Capacity	280 gallons / 303 nominal
Tare Weight	728 lbs.
Support	Saddles

MATERIAL SPECIFICATIONS

Heads	Carbon Steel
Shell	Carbon Steel
Couplings	Carbon Steel
Flanges	
Jacket	24 Gauge Steel
Manway	
Lining	Ultonium Glass

OPENINGS / HEIGHTS

MARK	SIZE	SERVICE
A	103"	Overall Length
B	36"	Circulation
C	48"	Supports
D	34"	Diameter
E	26.38"	Support Width
F	41"	Height
	1"	Drain

WARRANTY**FIRST THROUGH FIVE YEAR – LIMITED WARRANTY:**

Laars warrants the lined steel tank for leakage caused by defects in materials and /or workmanship for five years from date of installation. If the tank is found to be defective in manufacture, Laars will provide replacement of tank.

ONE YEAR – LIMITED WARRANTY: Laars warrants parts to be free from manufacturing defects in material and workmanship for one year from date of installation. If parts are found to be defective, Laars will provide replacement of parts.

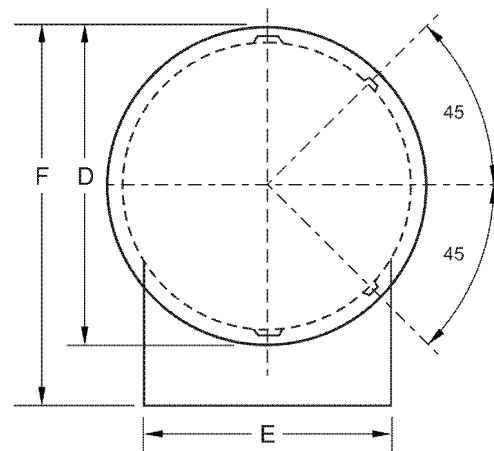
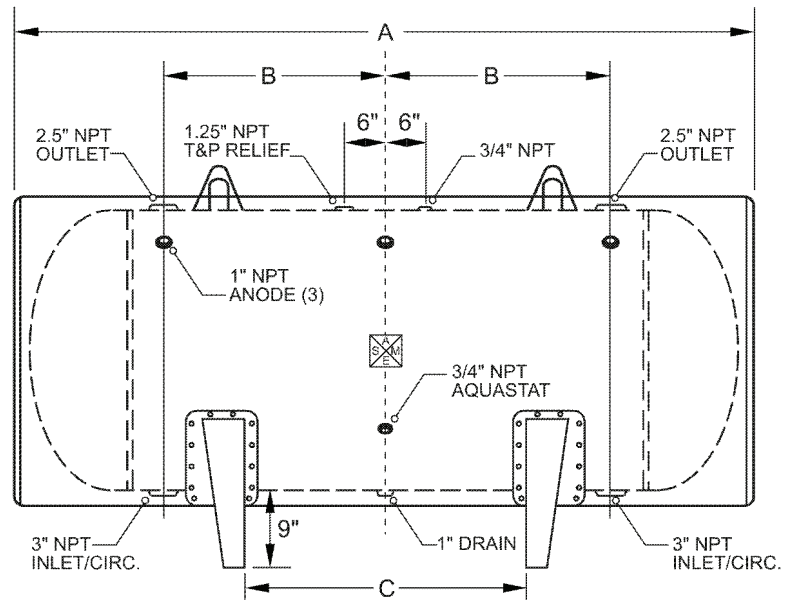
PROJECT

Customer	
Scale	Not to Scale
Date	
Customer P.O. #	
Drawing Number	JH-30-099

Horizontal Storage Tank

Size: 30-099

Submittal Data



LAARS
Heating Systems Company
 A subsidiary of **BRADFORD WHITE** Corporation
International Sales
 1869 Sismet Road, Mississauga
 Ontario, Canada L4W 1W8
 905.238.0100 • Fax 905.366.0130

Headquarters
 20 Industrial Way, Rochester, NH 03867
Customer Service, Service Advisors
 800.900.9276 • Fax 800.559.1583

Technical Support
 603.335.6300 • Fax 603.335.3355

www.Laars.com
 Litho in U.S.A. © Laars Heating Systems 1405 Doc. 4224C-4

DESIGN NOTES

Code	ASME Sec IV HLW
Design Pressure	125 psi
Test Pressure	125 psi
Heads	3/16" 414G
Shell	10 Gauge 414G
Interior	Ultonium Glass Lining
Insulation	2" High Density Foam, 12.5 R
Exterior	Baked Enamel Steel Jacket
Capacity	320 gallons / 340 nominal
Tare Weight	774 lbs.
Support	Saddles

MATERIAL SPECIFICATIONS

Heads	Carbon Steel
Shell	Carbon Steel
Couplings	Carbon Steel
Flanges	
Jacket	24 Gauge Steel
Manway	
Lining	Ultonium Glass

OPENINGS / HEIGHTS

MARK	SIZE	SERVICE
A	115"	Overall Length
B	42"	Circulation
C	60"	Supports
D	34"	Diameter
E	26.38"	Support Width
F	41"	Height
	1"	Drain

WARRANTY**FIRST THROUGH FIVE YEAR – LIMITED WARRANTY:**

Laars warrants the lined steel tank for leakage caused by defects in materials and /or workmanship for five years from date of installation. If the tank is found to be defective in manufacture, Laars will provide replacement of tank.

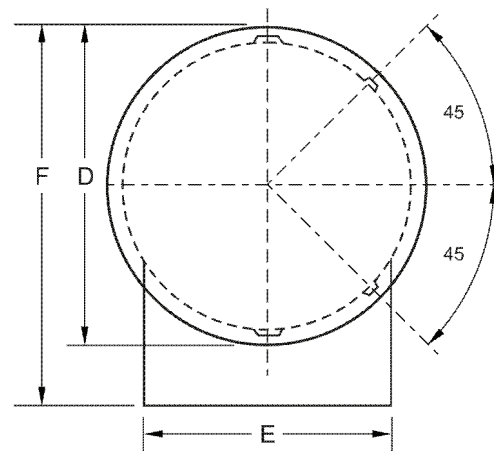
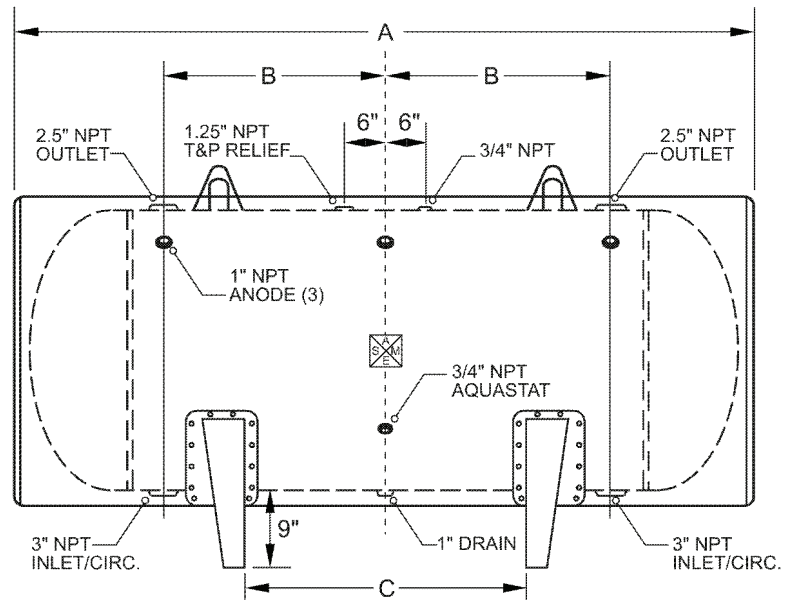
ONE YEAR – LIMITED WARRANTY: Laars warrants parts to be free from manufacturing defects in material and workmanship for one year from date of installation. If parts are found to be defective, Laars will provide replacement of parts.

PROJECT

Customer	
Scale	Not to Scale
Date	
Customer P.O. #	
Drawing Number	JH-30-111

Horizontal Storage Tank

Size: 30-111

Submittal Data

LAARS
Heating Systems Company
 A subsidiary of BRADFORD WHITE Corporation

International Sales
 1869 Sismet Road, Mississauga
 Ontario, Canada L4W 1W8
 905.238.0100 • Fax 905.366.0130

Headquarters
 20 Industrial Way, Rochester, NH 03867
Customer Service, Service Advisors
 800.900.9276 • Fax 800.559.1583

Technical Support
 603.335.6300 • Fax 603.335.3355

www.Laars.com
 Litho in U.S.A. © Laars Heating Systems 1405 Doc. 4224C-5

DESIGN NOTES

Code	ASME Sec IV HLW
Design Pressure	125 psi
Test Pressure	125 psi
Heads	3/16" 414G
Shell	3/16" 516 Grade 70
Interior	Ultonium Glass Lining
Insulation	2" High Density Foam, 12.5 R
Exterior	Baked Enamel Steel Jacket
Capacity	285 gallons / 317 nominal
Tare Weight	776 lbs.
Support	Saddles

MATERIAL SPECIFICATIONS

Heads	Carbon Steel
Shell	Carbon Steel
Couplings	Carbon Steel
Flanges	
Jacket	24 Gauge Steel
Manway	
Lining	Ultonium Glass

OPENINGS / HEIGHTS

MARK	SIZE	SERVICE
A	76"	Overall Length
B	21"	Circulation
C	18"	Supports
D	40"	Diameter
E	31.69"	Support Width
F	47"	Height
	1"	Drain

WARRANTY**FIRST THROUGH FIVE YEAR – LIMITED WARRANTY:**

Laars warrants the lined steel tank for leakage caused by defects in materials and /or workmanship for five years from date of installation. If the tank is found to be defective in manufacture, Laars will provide replacement of tank.

ONE YEAR – LIMITED WARRANTY: Laars warrants parts to be free from manufacturing defects in material and workmanship for one year from date of installation. If parts are found to be defective, Laars will provide replacement of parts.

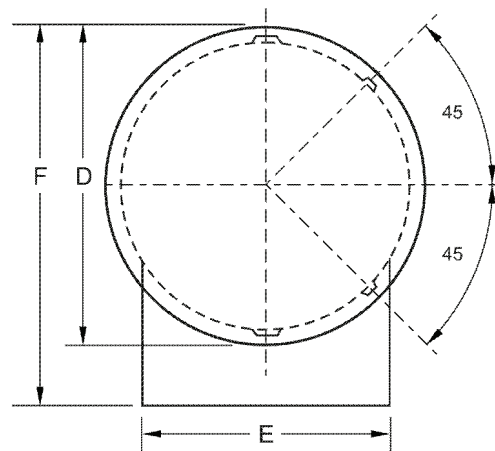
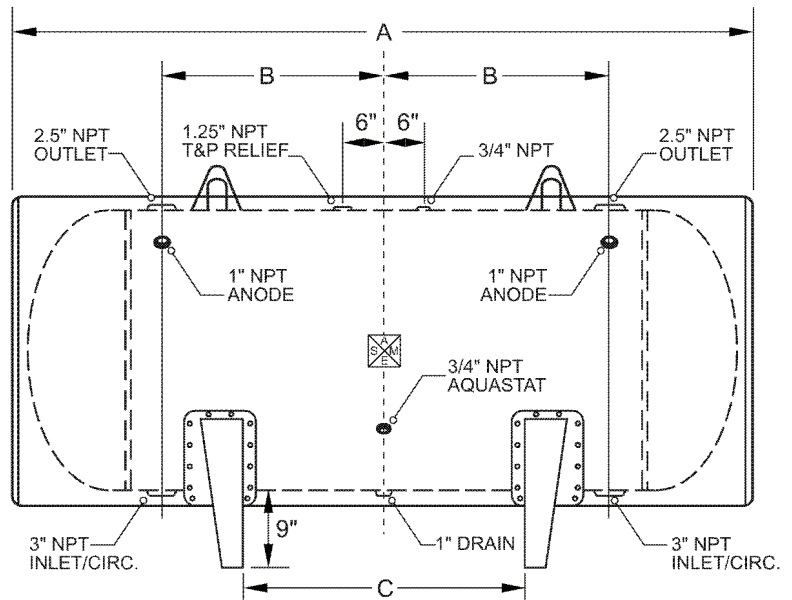
PROJECT

Customer	
Scale	Not to Scale
Date	
Customer P.O. #	
Drawing Number	JH-36-072

Horizontal Storage Tank

Size: 36-072

Submittal Data



LAARS
Heating Systems Company
 A subsidiary of **BRADFORD WHITE** Corporation
International Sales
 1869 Sismet Road, Mississauga
 Ontario, Canada L4W 1W8
 905.238.0100 • Fax 905.366.0130

Headquarters
 20 Industrial Way, Rochester, NH 03867
Customer Service, Service Advisors
 800.900.9276 • Fax 800.559.1583

Technical Support
 603.335.6300 • Fax 603.335.3355

www.Laars.com
 Litho in U.S.A. © Laars Heating Systems 1405 Doc. 4224C-6

DESIGN NOTES

Code	ASME Sec IV HLW
Design Pressure	125 psi
Test Pressure	125 psi
Heads	3/16" 414G
Shell	3/16" 516 Grade 70
Interior	Ultonium Glass Lining
Insulation	2" High Density Foam, 12.5 R
Exterior	Baked Enamel Steel Jacket
Capacity	310 gallons / 344 nominal
Tare Weight	827 lbs.
Support	Saddles

MATERIAL SPECIFICATIONS

Heads	Carbon Steel
Shell	Carbon Steel
Couplings	Carbon Steel
Flanges	
Jacket	24 Gauge Steel
Manway	
Lining	Ultonium Glass

OPENINGS / HEIGHTS

MARK	SIZE	SERVICE
A	82"	Overall Length
B	24"	Circulation
C	24"	Supports
D	40"	Diameter
E	31.69"	Support Width
F	47"	Height
	1"	Drain

WARRANTY**FIRST THROUGH FIVE YEAR – LIMITED WARRANTY:**

Laars warrants the lined steel tank for leakage caused by defects in materials and /or workmanship for five years from date of installation. If the tank is found to be defective in manufacture, Laars will provide replacement of tank.

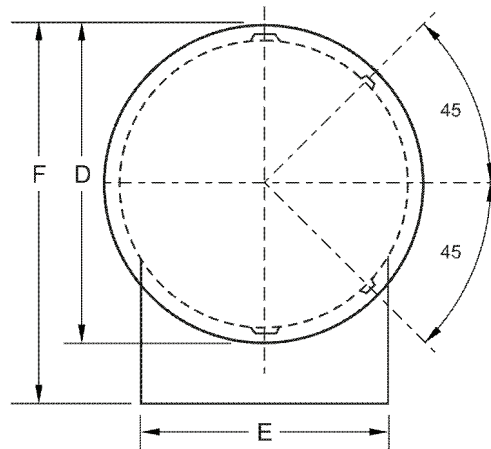
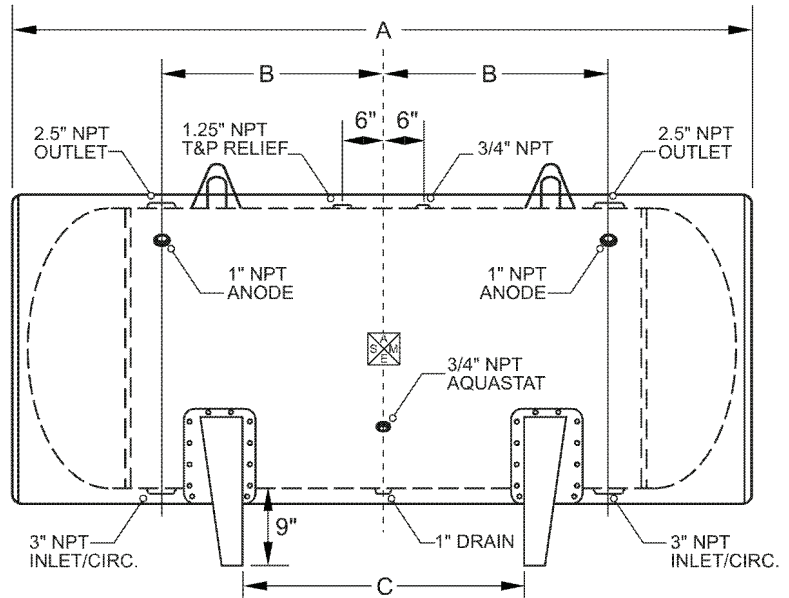
ONE YEAR – LIMITED WARRANTY: Laars warrants parts to be free from manufacturing defects in material and workmanship for one year from date of installation. If parts are found to be defective, Laars will provide replacement of parts.

PROJECT

Customer	
Scale	Not to Scale
Date	
Customer P.O. #	
Drawing Number	JH-36-078

Horizontal Storage Tank

Size: 36-078

Submittal Data

LAARS
Heating Systems Company
 A subsidiary of **BRADFORD WHITE** Corporation
International Sales
 1869 Sismet Road, Mississauga
 Ontario, Canada L4W 1W8
 905.238.0100 • Fax 905.366.0130

Headquarters
 20 Industrial Way, Rochester, NH 03867
Customer Service, Service Advisors
 800.900.9276 • Fax 800.559.1583

Technical Support
 603.335.6300 • Fax 603.335.3355

www.Laars.com
 Litho in U.S.A. © Laars Heating Systems 1405 Doc. 4224C-7

DESIGN NOTES

Code	ASME Sec IV HLW
Design Pressure	125 psi
Test Pressure	125 psi
Heads	3/16" 414G
Shell	3/16" 516 Grade 70
Interior	Ultonium Glass Lining
Insulation	2" High Density Foam, 12.5 R
Exterior	Baked Enamel Steel Jacket
Capacity	340 gallons / 375 nominal
Tare Weight	876 lbs.
Support	Saddles

MATERIAL SPECIFICATIONS

Heads	Carbon Steel
Shell	Carbon Steel
Couplings	Carbon Steel
Flanges	
Jacket	24 Gauge Steel
Manway	
Lining	Ultonium Glass

OPENINGS / HEIGHTS

MARK	SIZE	SERVICE
A	89"	Overall Length
B	27.50"	Circulation
C	31"	Supports
D	40"	Diameter
E	31.69"	Support Width
F	47"	Height
	1"	Drain

WARRANTY**FIRST THROUGH FIVE YEAR – LIMITED WARRANTY:**

Laars warrants the lined steel tank for leakage caused by defects in materials and /or workmanship for five years from date of installation. If the tank is found to be defective in manufacture, Laars will provide replacement of tank.

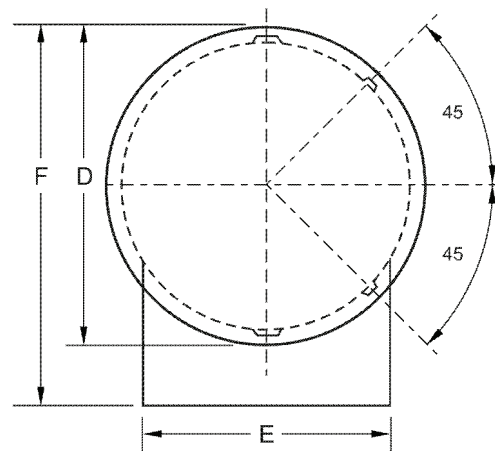
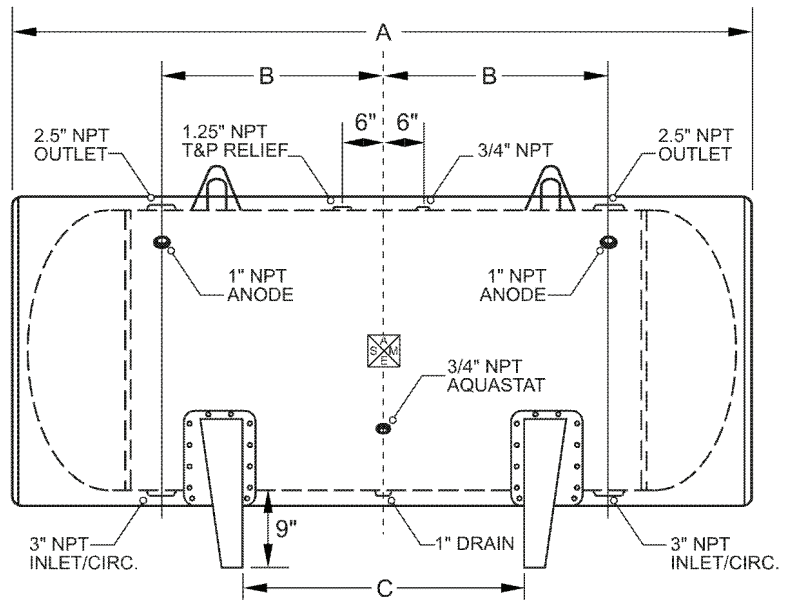
ONE YEAR – LIMITED WARRANTY: Laars warrants parts to be free from manufacturing defects in material and workmanship for one year from date of installation. If parts are found to be defective, Laars will provide replacement of parts.

PROJECT

Customer	
Scale	Not to Scale
Date	
Customer P.O. #	
Drawing Number	JH-36-085

Horizontal Storage Tank

Size: 36-085

Submittal Data

LAARS®
Heating Systems Company
 A subsidiary of **BRADFORD WHITE®** Corporation
International Sales
 1869 Sismet Road, Mississauga
 Ontario, Canada L4W 1W8
 905.238.0100 • Fax 905.366.0130

Headquarters
 20 Industrial Way, Rochester, NH 03867
Customer Service, Service Advisors
 800.900.9276 • Fax 800.559.1583

Technical Support
 603.335.6300 • Fax 603.335.3355

www.Laars.com
 Litho in U.S.A. © Laars Heating Systems 1405 Doc. 4224C-8

DESIGN NOTES

Code	ASME Sec IV HLW
Design Pressure	125 psi
Test Pressure	125 psi
Heads	3/16" 414G
Shell	3/16" 516 Grade 70
Interior	Ultonium Glass Lining
Insulation	2" High Density Foam, 12.5 R
Exterior	Baked Enamel Steel Jacket
Capacity	360 gallons / 397 nominal
Tare Weight	935 lbs.
Support	Saddles

MATERIAL SPECIFICATIONS

Heads	Carbon Steel
Shell	Carbon Steel
Couplings	Carbon Steel
Flanges	
Jacket	24 Gauge Steel
Manway	
Lining	Ultonium Glass

OPENINGS / HEIGHTS

MARK	SIZE	SERVICE
A	94"	Overall Length
B	30"	Circulation
C	36"	Supports
D	40"	Diameter
E	31.69"	Support Width
F	47"	Height
	1"	Drain

WARRANTY**FIRST THROUGH FIVE YEAR – LIMITED WARRANTY:**

Laars warrants the lined steel tank for leakage caused by defects in materials and /or workmanship for five years from date of installation. If the tank is found to be defective in manufacture, Laars will provide replacement of tank.

ONE YEAR – LIMITED WARRANTY: Laars warrants parts to be free from manufacturing defects in material and workmanship for one year from date of installation. If parts are found to be defective, Laars will provide replacement of parts.

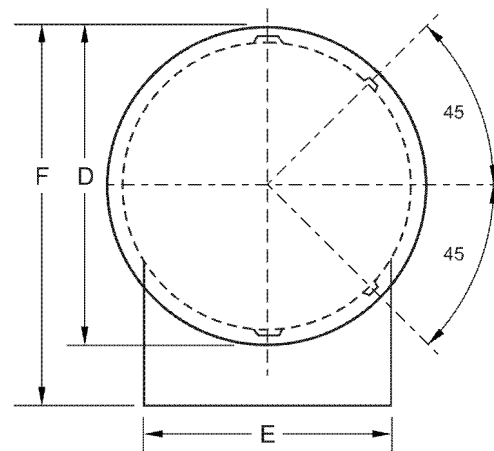
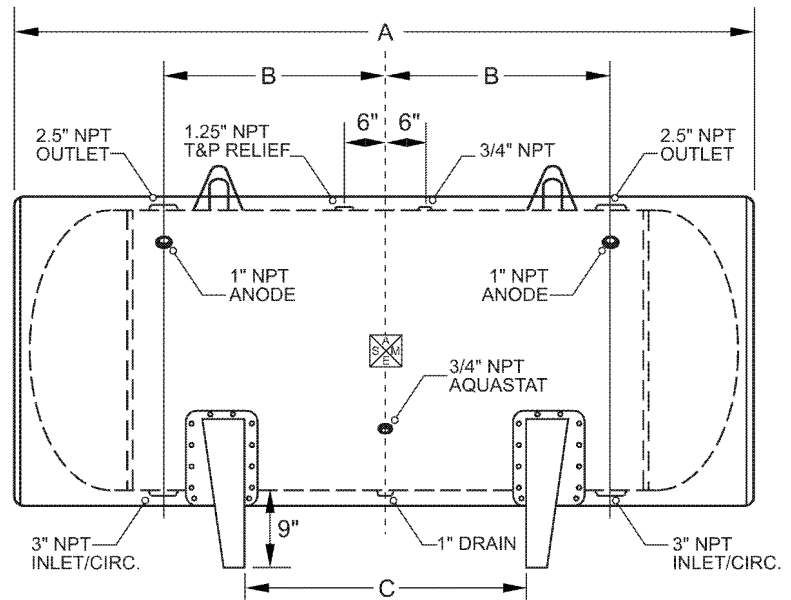
PROJECT

Customer	
Scale	Not to Scale
Date	
Customer P.O. #	
Drawing Number	JH-36-090

Horizontal Storage Tank

Size: 36-090

Submittal Data



LAARS
Heating Systems Company
 A subsidiary of **BRADFORD WHITE** Corporation
International Sales
 1869 Sismet Road, Mississauga
 Ontario, Canada L4W 1W8
 905.238.0100 • Fax 905.366.0130

Headquarters
 20 Industrial Way, Rochester, NH 03867
Customer Service, Service Advisors
 800.900.9276 • Fax 800.559.1583

Technical Support
 603.335.6300 • Fax 603.335.3355

www.Laars.com
 Litho in U.S.A. © Laars Heating Systems 1405 Doc. 4224C-9

DESIGN NOTES

Code	ASME Sec IV HLW
Design Pressure	125 psi
Test Pressure	125 psi
Heads	3/16" 414G
Shell	3/16" 516 Grade 70
Interior	Ultonium Glass Lining
Insulation	2" High Density Foam, 12.5 R
Exterior	Baked Enamel Steel Jacket
Capacity	415 gallons / 449 nominal
Tare Weight	1016 lbs.
Support	Saddles

MATERIAL SPECIFICATIONS

Heads	Carbon Steel
Shell	Carbon Steel
Couplings	Carbon Steel
Flanges	
Jacket	24 Gauge Steel
Manway	
Lining	Ultonium Glass

OPENINGS / HEIGHTS

MARK	SIZE	SERVICE
A	106"	Overall Length
B	36"	Circulation
C	48"	Supports
D	40"	Diameter
E	31.69"	Support Width
F	47"	Height
	1"	Drain

WARRANTY**FIRST THROUGH FIVE YEAR – LIMITED WARRANTY:**

Laars warrants the lined steel tank for leakage caused by defects in materials and /or workmanship for five years from date of installation. If the tank is found to be defective in manufacture, Laars will provide replacement of tank.

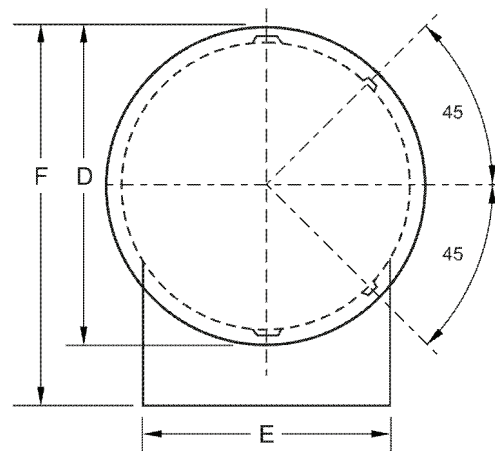
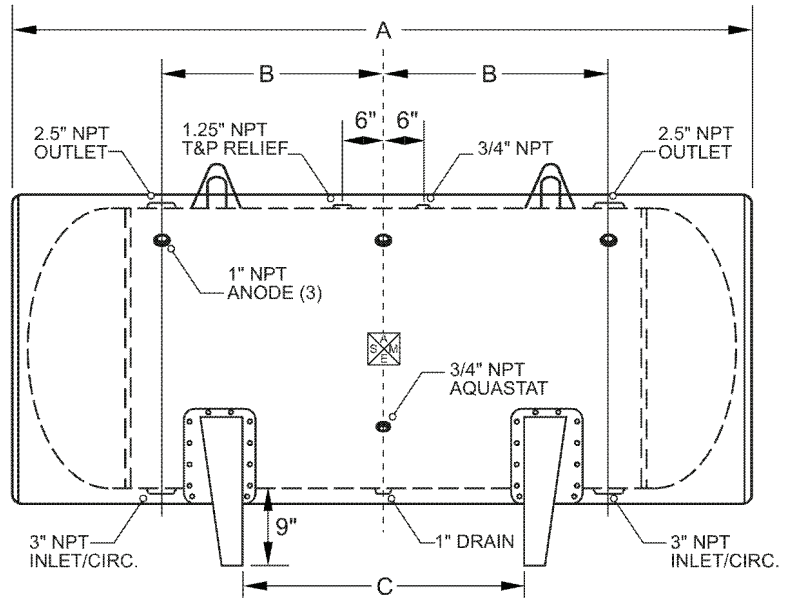
ONE YEAR – LIMITED WARRANTY: Laars warrants parts to be free from manufacturing defects in material and workmanship for one year from date of installation. If parts are found to be defective, Laars will provide replacement of parts.

PROJECT

Customer	
Scale	Not to Scale
Date	
Customer P.O. #	
Drawing Number	JH-36-102

Horizontal Storage Tank

Size: 36-102

Submittal Data

LAARS®
Heating Systems Company
 A subsidiary of **BRADFORD WHITE®** Corporation

International Sales
 1869 Sismet Road, Mississauga
 Ontario, Canada L4W 1W8
 905.238.0100 • Fax 905.366.0130

Headquarters
 20 Industrial Way, Rochester, NH 03867
Customer Service, Service Advisors
 800.900.9276 • Fax 800.559.1583

Technical Support
 603.335.6300 • Fax 603.335.3355

www.Laars.com
 Litho in U.S.A. © Laars Heating Systems 1405 Doc. 4224C-10

DESIGN NOTES

Code	ASME Sec IV HLW
Design Pressure	125 psi
Test Pressure	125 psi
Heads	3/16" 414G
Shell	3/16" 516 Grade 70
Interior	Ultonium Glass Lining
Insulation	2" High Density Foam, 12.5 R
Exterior	Baked Enamel Steel Jacket
Capacity	465 gallons / 502 nominal
Tare Weight	1157 lbs.
Support	Saddles

MATERIAL SPECIFICATIONS

Heads	Carbon Steel
Shell	Carbon Steel
Couplings	Carbon Steel
Flanges	
Jacket	24 Gauge Steel
Manway	
Lining	Ultonium Glass

OPENINGS / HEIGHTS

MARK	SIZE	SERVICE
A	118"	Overall Length
B	42"	Circulation
C	60"	Supports
D	40"	Diameter
E	31.69"	Support Width
F	47"	Height
	1"	Drain

WARRANTY**FIRST THROUGH FIVE YEAR – LIMITED WARRANTY:**

Laars warrants the lined steel tank for leakage caused by defects in materials and /or workmanship for five years from date of installation. If the tank is found to be defective in manufacture, Laars will provide replacement of tank.

ONE YEAR – LIMITED WARRANTY: Laars warrants parts to be free from manufacturing defects in material and workmanship for one year from date of installation. If parts are found to be defective, Laars will provide replacement of parts.

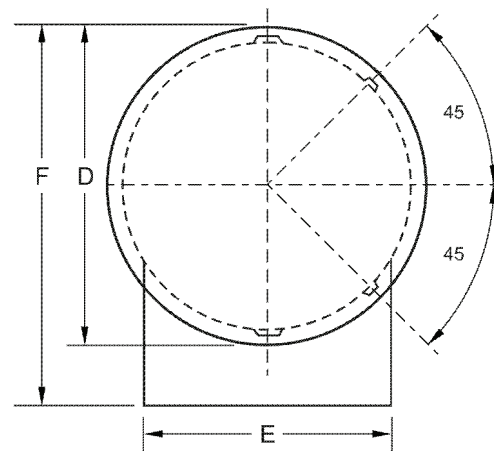
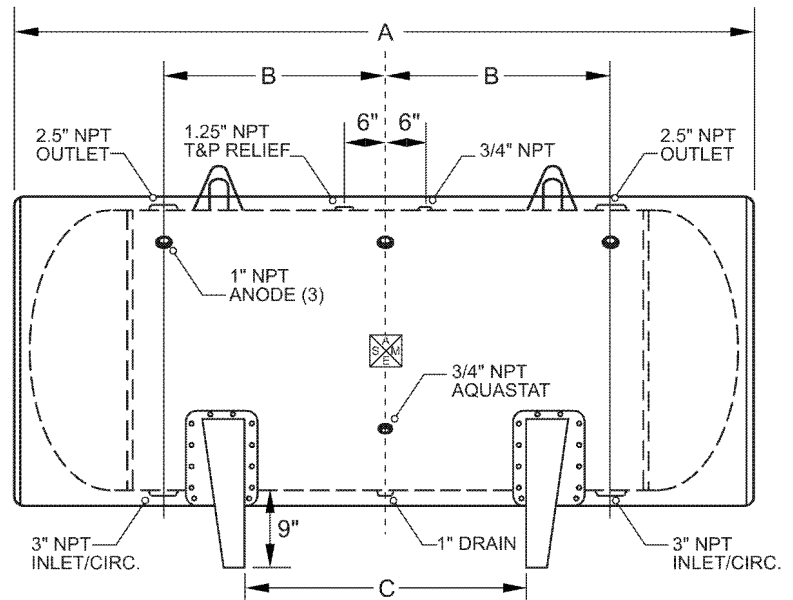
PROJECT

Customer	
Scale	Not to Scale
Date	
Customer P.O. #	
Drawing Number	JH-36-114

Horizontal Storage Tank

Size: 36-114

Submittal Data



LAARS
Heating Systems Company
 A subsidiary of **BRADFORD WHITE** Corporation
International Sales
 1869 Sismet Road, Mississauga
 Ontario, Canada L4W 1W8
 905.238.0100 • Fax 905.366.0130

Headquarters
 20 Industrial Way, Rochester, NH 03867
Customer Service, Service Advisors
 800.900.9276 • Fax 800.559.1583

Technical Support
 603.335.6300 • Fax 603.335.3355

www.Laars.com
 Litho in U.S.A. © Laars Heating Systems 1405 Doc. 4224C-11

DESIGN NOTES

Code	ASME Sec IV HLW
Design Pressure	125 psi
Test Pressure	125 psi
Heads	3/16" 414G
Shell	3/16" 516 Grade 70
Interior	Ultonium Glass Lining
Insulation	2" High Density Foam, 12.5 R
Exterior	Baked Enamel Steel Jacket
Capacity	515 gallons / 555 nominal
Tare Weight	1260 lbs.
Support	Saddles

MATERIAL SPECIFICATIONS

Heads	Carbon Steel
Shell	Carbon Steel
Couplings	Carbon Steel
Flanges	
Jacket	24 Gauge Steel
Manway	
Lining	Ultonium Glass

OPENINGS / HEIGHTS

MARK	SIZE	SERVICE
A	130"	Overall Length
B	48"	Circulation
C	72"	Supports
D	40"	Diameter
E	31.69"	Support Width
F	47"	Height
	1"	Drain

WARRANTY**FIRST THROUGH FIVE YEAR – LIMITED WARRANTY:**

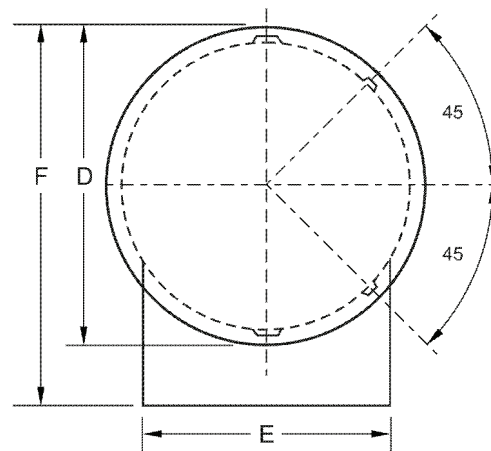
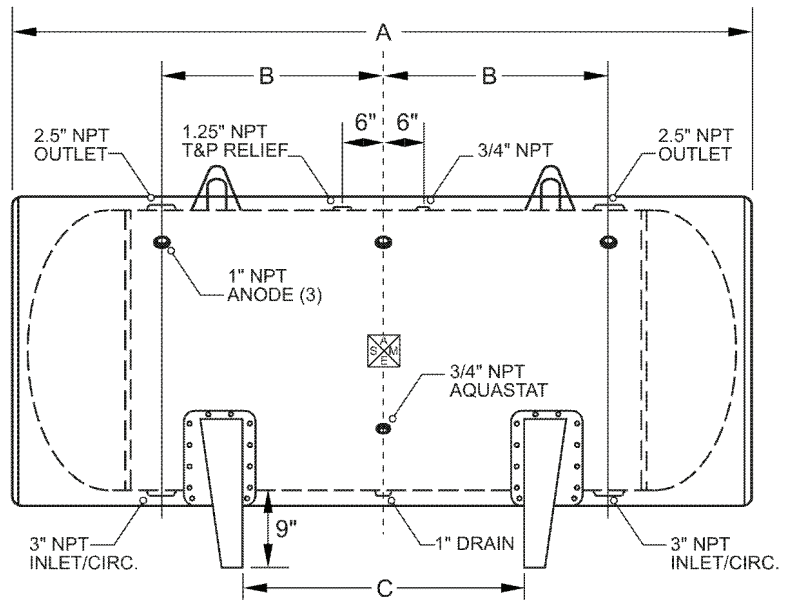
Laars warrants the lined steel tank for leakage caused by defects in materials and /or workmanship for five years from date of installation. If the tank is found to be defective in manufacture, Laars will provide replacement of tank.

ONE YEAR – LIMITED WARRANTY: Laars warrants parts to be free from manufacturing defects in material and workmanship for one year from date of installation. If parts are found to be defective, Laars will provide replacement of parts.

PROJECT

Customer	
Scale	Not to Scale
Date	
Customer P.O. #	
Drawing Number	JH-36-126

Horizontal Storage Tank

Size: 36-126**Submittal Data**

LAARS®
Heating Systems Company
 A subsidiary of **BRADFORD WHITE®** Corporation
International Sales
 1869 Sismet Road, Mississauga
 Ontario, Canada L4W 1W8
 905.238.0100 • Fax 905.366.0130

Headquarters
 20 Industrial Way, Rochester, NH 03867
Customer Service, Service Advisors
 800.900.9276 • Fax 800.559.1583

Technical Support
 603.335.6300 • Fax 603.335.3355

www.Laars.com
 Litho in U.S.A. © Laars Heating Systems 1405 Doc. 4224C-12

DESIGN NOTES

Code	ASME Sec IV HLW
Design Pressure	125 psi
Test Pressure	125 psi
Heads	1/4" 414G
Shell	3/16" 516 Grade 70
Interior	Ultonium Glass Lining
Insulation	2" High Density Foam, 12.5 R
Exterior	Baked Enamel Steel Jacket
Capacity	435 gallons / 486 nominal
Tare Weight	1110 lbs.
Support	Saddles

MATERIAL SPECIFICATIONS

Heads	Carbon Steel
Shell	Carbon Steel
Couplings	Carbon Steel
Flanges	
Jacket	24 Gauge Steel
Manway	Carbon Steel
Lining	Ultonium Glass

OPENINGS / HEIGHTS

MARK	SIZE	SERVICE
A	85"	Overall Length
B	24"	Circulation
C	24"	Supports
D	46"	Diameter
E	36.75"	Support Width
F	53"	Height
	1"	Drain

WARRANTY**FIRST THROUGH FIVE YEAR – LIMITED WARRANTY:**

Laars warrants the lined steel tank for leakage caused by defects in materials and /or workmanship for five years from date of installation. If the tank is found to be defective in manufacture, Laars will provide replacement of tank.

ONE YEAR – LIMITED WARRANTY: Laars warrants parts to be free from manufacturing defects in material and workmanship for one year from date of installation. If parts are found to be defective, Laars will provide replacement of parts.

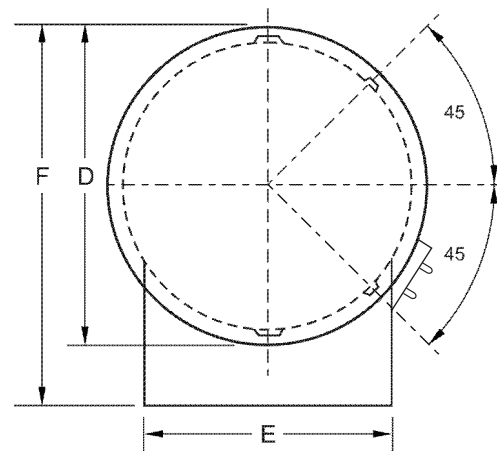
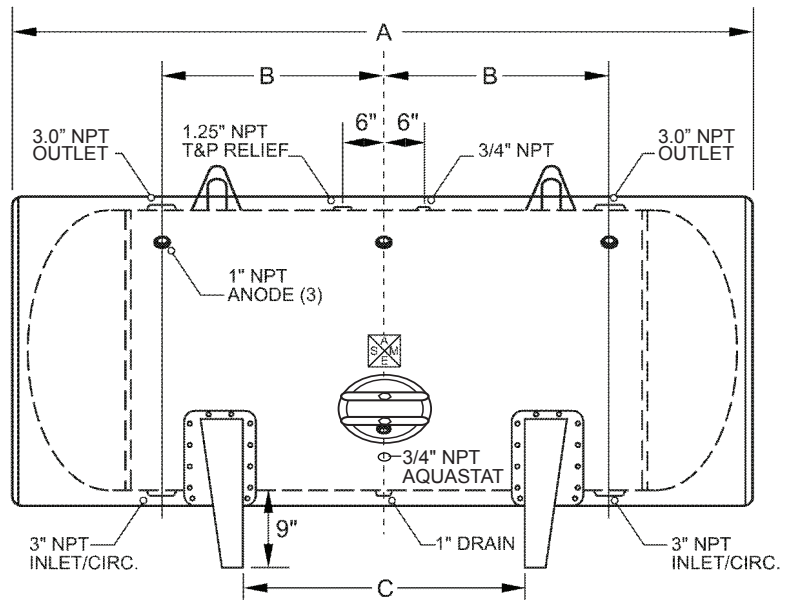
PROJECT

Customer	
Scale	Not to Scale
Date	
Customer P.O. #	
Drawing Number	JH-42-081

Horizontal Storage Tank

Size: 42-081

Submittal Data



LAARS
Heating Systems Company
 A subsidiary of **BRADFORD WHITE** Corporation
International Sales
 1869 Sismet Road, Mississauga
 Ontario, Canada L4W 1W8
 905.238.0100 • Fax 905.366.0130

Headquarters
 20 Industrial Way, Rochester, NH 03867
Customer Service, Service Advisors
 800.900.9276 • Fax 800.559.1583

Technical Support
 603.335.6300 • Fax 603.335.3355

www.Laars.com
 Litho in U.S.A. © Laars Heating Systems 1405 Doc. 4224C-13

DESIGN NOTES

Code	ASME Sec IV HLW
Design Pressure	125 psi
Test Pressure	125 psi
Heads	1/4" 414G
Shell	3/16" 516 Grade 70
Interior	Ultonium Glass Lining
Insulation	2" High Density Foam, 12.5 R
Exterior	Baked Enamel Steel Jacket
Capacity	455 gallons / 505 nominal
Tare Weight	1049 lbs.
Support	Saddles

MATERIAL SPECIFICATIONS

Heads	Carbon Steel
Shell	Carbon Steel
Couplings	Carbon Steel
Flanges	
Jacket	24 Gauge Steel
Manway	Carbon Steel
Lining	Ultonium Glass

OPENINGS / HEIGHTS

MARK	SIZE	SERVICE
A	88"	Overall Length
B	25.5"	Circulation
C	27"	Supports
D	46"	Diameter
E	36.75"	Support Width
F	53"	Height
	1"	Drain

WARRANTY**FIRST THROUGH FIVE YEAR – LIMITED WARRANTY:**

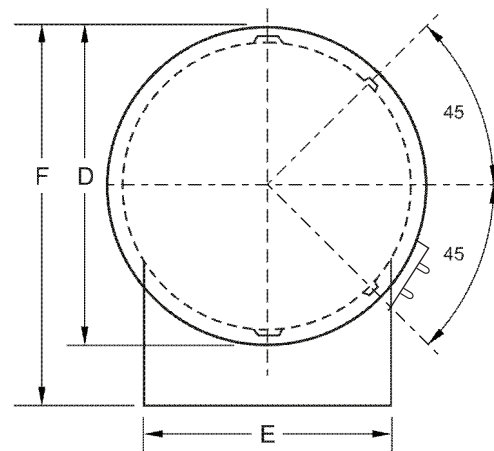
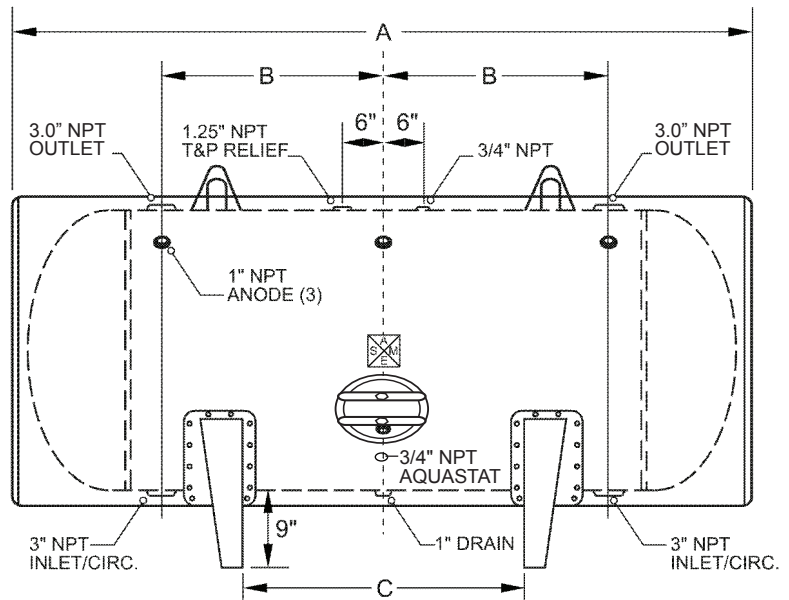
Laars warrants the lined steel tank for leakage caused by defects in materials and /or workmanship for five years from date of installation. If the tank is found to be defective in manufacture, Laars will provide replacement of tank.

ONE YEAR – LIMITED WARRANTY: Laars warrants parts to be free from manufacturing defects in material and workmanship for one year from date of installation. If parts are found to be defective, Laars will provide replacement of parts.

PROJECT

Customer	
Scale	Not to Scale
Date	
Customer P.O. #	
Drawing Number	JH-42-085

Horizontal Storage Tank

Size: 42-085**Submittal Data**

LAARS®
Heating Systems Company
 A subsidiary of **BRADFORD WHITE®** Corporation
International Sales
 1869 Sismet Road, Mississauga
 Ontario, Canada L4W 1W8
 905.238.0100 • Fax 905.366.0130

Headquarters
 20 Industrial Way, Rochester, NH 03867
Customer Service, Service Advisors
 800.900.9276 • Fax 800.559.1583

Technical Support
 603.335.6300 • Fax 603.335.3355

www.Laars.com
 Litho in U.S.A. © Laars Heating Systems 1405 Doc. 4224C-14

DESIGN NOTES

Code	ASME Sec IV HLW
Design Pressure	125 psi
Test Pressure	125 psi
Heads	1/4" 414G
Shell	3/16" 516 Grade 70
Interior	Ultonium Glass Lining
Insulation	2" High Density Foam, 12.5 R
Exterior	Baked Enamel Steel Jacket
Capacity	505 gallons / 558 nominal
Tare Weight	1181 lbs.
Support	Saddles

MATERIAL SPECIFICATIONS

Heads	Carbon Steel
Shell	Carbon Steel
Couplings	Carbon Steel
Flanges	
Jacket	24 Gauge Steel
Manway	Carbon Steel
Lining	Ultonium Glass

OPENINGS / HEIGHTS

MARK	SIZE	SERVICE
A	97"	Overall Length
B	30"	Circulation
C	36"	Supports
D	46"	Diameter
E	36.75"	Support Width
F	53"	Height
	1"	Drain

WARRANTY**FIRST THROUGH FIVE YEAR – LIMITED WARRANTY:**

Laars warrants the lined steel tank for leakage caused by defects in materials and /or workmanship for five years from date of installation. If the tank is found to be defective in manufacture, Laars will provide replacement of tank.

ONE YEAR – LIMITED WARRANTY: Laars warrants parts to be free from manufacturing defects in material and workmanship for one year from date of installation. If parts are found to be defective, Laars will provide replacement of parts.

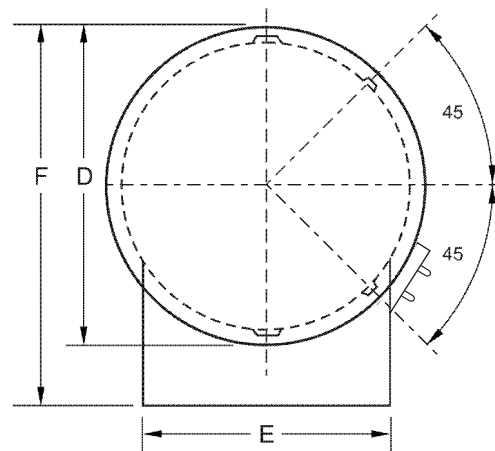
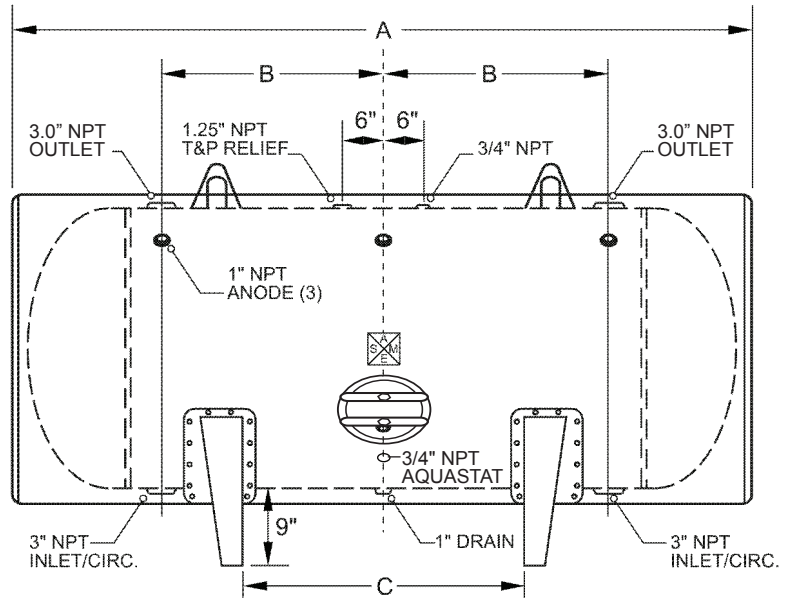
PROJECT

Customer	
Scale	Not to Scale
Date	
Customer P.O. #	
Drawing Number	JH-42-093

Horizontal Storage Tank

Size: 42-093

Submittal Data



LAARS
Heating Systems Company
 A subsidiary of **BRADFORD WHITE** Corporation
International Sales
 1869 Sismet Road, Mississauga
 Ontario, Canada L4W 1W8
 905.238.0100 • Fax 905.366.0130

Headquarters
 20 Industrial Way, Rochester, NH 03867
Customer Service, Service Advisors
 800.900.9276 • Fax 800.559.1583

Technical Support
 603.335.6300 • Fax 603.335.3355

www.Laars.com
 Litho in U.S.A. © Laars Heating Systems 1405 Doc. 4224C-15

DESIGN NOTES

Code	ASME Sec IV HLW
Design Pressure	125 psi
Test Pressure	125 psi
Heads	1/4" 414G
Shell	3/16" 516 Grade 70
Interior	Ultonium Glass Lining
Insulation	2" High Density Foam, 12.5 R
Exterior	Baked Enamel Steel Jacket
Capacity	575 gallons / 630 nominal
Tare Weight	1263 lbs.
Support	Saddles

MATERIAL SPECIFICATIONS

Heads	Carbon Steel
Shell	Carbon Steel
Couplings	Carbon Steel
Flanges	
Jacket	24 Gauge Steel
Manway	Carbon Steel
Lining	Ultonium Glass

OPENINGS / HEIGHTS

MARK	SIZE	SERVICE
A	109"	Overall Length
B	36"	Circulation
C	48"	Supports
D	46"	Diameter
E	36.75"	Support Width
F	53"	Height
	1"	Drain

WARRANTY**FIRST THROUGH FIVE YEAR – LIMITED WARRANTY:**

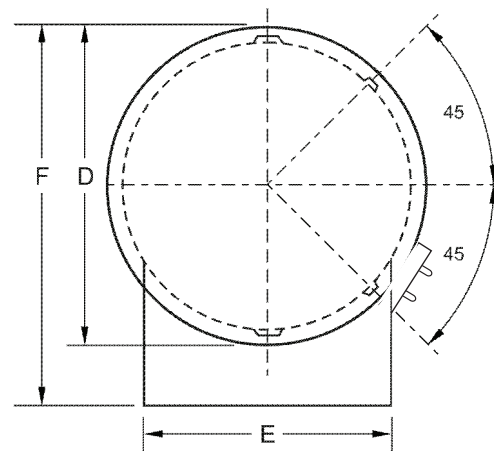
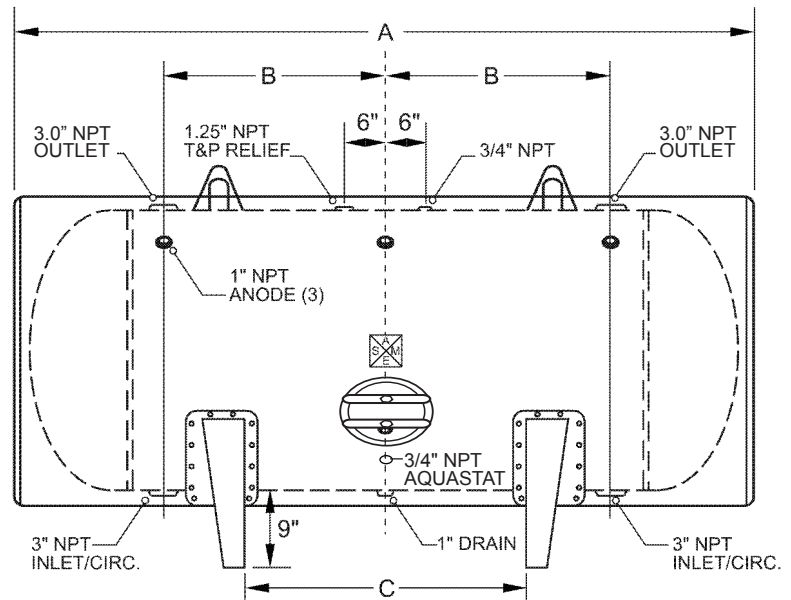
Laars warrants the lined steel tank for leakage caused by defects in materials and /or workmanship for five years from date of installation. If the tank is found to be defective in manufacture, Laars will provide replacement of tank.

ONE YEAR – LIMITED WARRANTY: Laars warrants parts to be free from manufacturing defects in material and workmanship for one year from date of installation. If parts are found to be defective, Laars will provide replacement of parts.

PROJECT

Customer	
Scale	Not to Scale
Date	
Customer P.O. #	
Drawing Number	JH-42-105

Horizontal Storage Tank

Size: 42-105
Submittal Data


LAARS®
Heating Systems Company
 A subsidiary of **BRADFORD WHITE®** Corporation
International Sales
 1869 Sismet Road, Mississauga
 Ontario, Canada L4W 1W8
 905.238.0100 • Fax 905.366.0130

Headquarters
 20 Industrial Way, Rochester, NH 03867
Customer Service, Service Advisors
 800.900.9276 • Fax 800.559.1583

Technical Support
 603.335.6300 • Fax 603.335.3355

www.Laars.com
 Litho in U.S.A. © Laars Heating Systems 1405 Doc. 4224C-16

DESIGN NOTES

Code	ASME Sec IV HLW
Design Pressure	125 psi
Test Pressure	125 psi
Heads	1/4" 414G
Shell	3/16" 516 Grade 70
Interior	Ultonium Glass Lining
Insulation	2" High Density Foam, 12.5 R
Exterior	Baked Enamel Steel Jacket
Capacity	645 gallons / 702 nominal
Tare Weight	1352 lbs.
Support	Saddles

MATERIAL SPECIFICATIONS

Heads	Carbon Steel
Shell	Carbon Steel
Couplings	Carbon Steel
Flanges	
Jacket	24 Gauge Steel
Manway	Carbon Steel
Lining	Ultonium Glass

OPENINGS / HEIGHTS

MARK	SIZE	SERVICE
A	121"	Overall Length
B	42"	Circulation
C	60"	Supports
D	46"	Diameter
E	36.75"	Support Width
F	53"	Height
	1"	Drain

WARRANTY**FIRST THROUGH FIVE YEAR – LIMITED WARRANTY:**

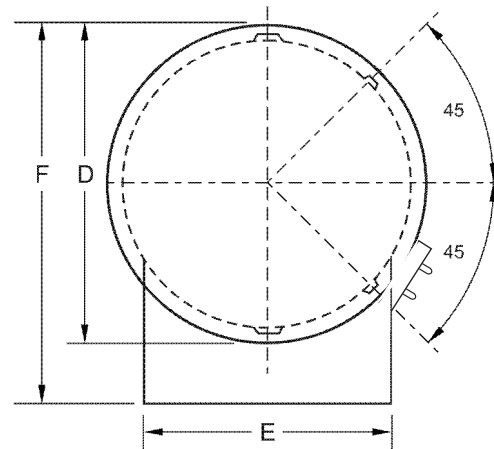
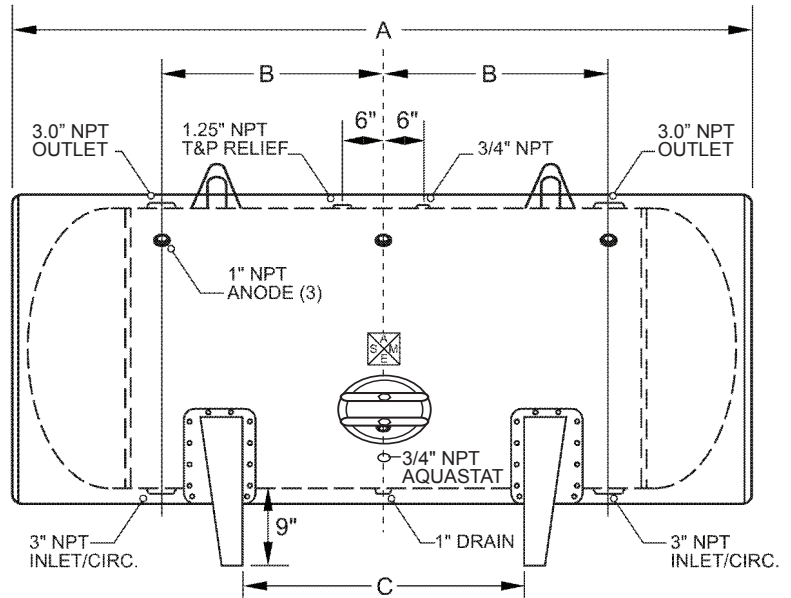
Laars warrants the lined steel tank for leakage caused by defects in materials and /or workmanship for five years from date of installation. If the tank is found to be defective in manufacture, Laars will provide replacement of tank.

ONE YEAR – LIMITED WARRANTY: Laars warrants parts to be free from manufacturing defects in material and workmanship for one year from date of installation. If parts are found to be defective, Laars will provide replacement of parts.

PROJECT

Customer	
Scale	Not to Scale
Date	
Customer P.O. #	
Drawing Number	JH-42-117

Horizontal Storage Tank

Size: 42-117**Submittal Data**

LAARS®
Heating Systems Company
 A subsidiary of **BRADFORD WHITE®** Corporation
International Sales
 1869 Sismet Road, Mississauga
 Ontario, Canada L4W 1W8
 905.238.0100 • Fax 905.366.0130

Headquarters
 20 Industrial Way, Rochester, NH 03867
Customer Service, Service Advisors
 800.900.9276 • Fax 800.559.1583

Technical Support
 603.335.6300 • Fax 603.335.3355

www.Laars.com
 Litho in U.S.A. © Laars Heating Systems 1405 Doc. 4224C-17

DESIGN NOTES

Code	ASME Sec IV HLW
Design Pressure	125 psi
Test Pressure	125 psi
Heads	1/4" 414G
Shell	3/16" 516 Grade 70
Interior	Ultonium Glass Lining
Insulation	2" High Density Foam, 12.5 R
Exterior	Baked Enamel Steel Jacket
Capacity	720 gallons / 774 nominal
Tare Weight	1460 lbs.
Support	Saddles

MATERIAL SPECIFICATIONS

Heads	Carbon Steel
Shell	Carbon Steel
Couplings	Carbon Steel
Flanges	
Jacket	24 Gauge Steel
Manway	Carbon Steel
Lining	Ultonium Glass

OPENINGS / HEIGHTS

MARK	SIZE	SERVICE
A	133"	Overall Length
B	48"	Circulation
C	72"	Supports
D	46"	Diameter
E	36.75"	Support Width
F	53"	Height
	1"	Drain

WARRANTY**FIRST THROUGH FIVE YEAR – LIMITED WARRANTY:**

Laars warrants the lined steel tank for leakage caused by defects in materials and /or workmanship for five years from date of installation. If the tank is found to be defective in manufacture, Laars will provide replacement of tank.

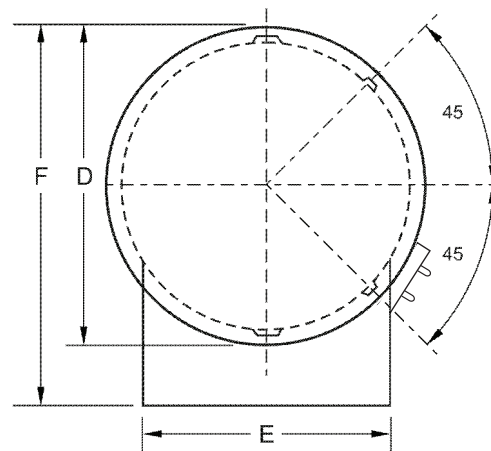
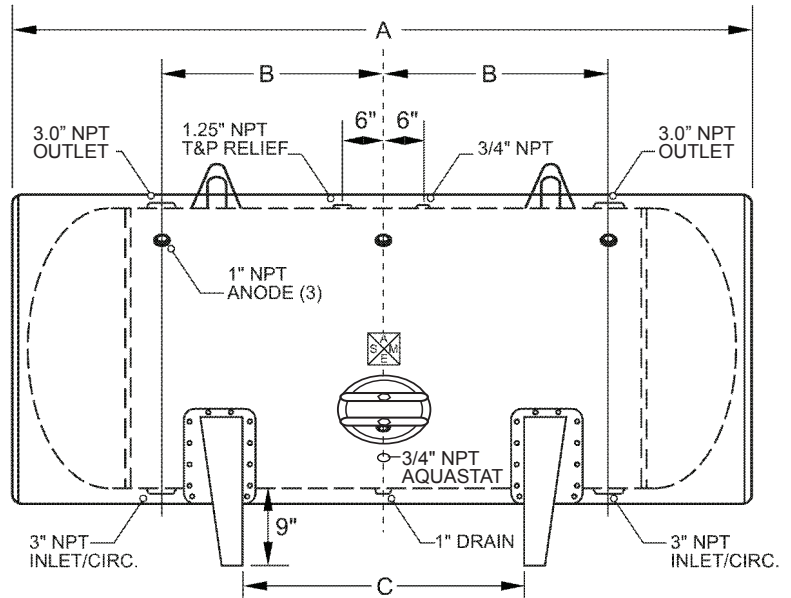
ONE YEAR – LIMITED WARRANTY: Laars warrants parts to be free from manufacturing defects in material and workmanship for one year from date of installation. If parts are found to be defective, Laars will provide replacement of parts.

PROJECT

Customer	
Scale	Not to Scale
Date	
Customer P.O. #	
Drawing Number	JH-42-129

Horizontal Storage Tank

Size: 42-129

Submittal Data

LAARS®
Heating Systems Company
 A subsidiary of **BRADFORD WHITE®** Corporation
International Sales
 1869 Sismet Road, Mississauga
 Ontario, Canada L4W 1W8
 905.238.0100 • Fax 905.366.0130

Headquarters
 20 Industrial Way, Rochester, NH 03867
Customer Service, Service Advisors
 800.900.9276 • Fax 800.559.1583

Technical Support
 603.335.6300 • Fax 603.335.3355

www.Laars.com
 Litho in U.S.A. © Laars Heating Systems 1405 Doc. 4224C-18

DESIGN NOTES

Code	ASME Sec IV HLW
Design Pressure	125 psi
Test Pressure	125 psi
Heads	1/4" 414G
Shell	3/16" 516 Grade 70
Interior	Ultonium Glass Lining
Insulation	2" High Density Foam, 12.5 R
Exterior	Baked Enamel Steel Jacket
Capacity	776 gallons / 834 nominal
Tare Weight	1547 lbs.
Support	Saddles

MATERIAL SPECIFICATIONS

Heads	Carbon Steel
Shell	Carbon Steel
Couplings	Carbon Steel
Flanges	
Jacket	24 Gauge Steel
Manway	Carbon Steel
Lining	Ultonium Glass

OPENINGS / HEIGHTS

MARK	SIZE	SERVICE
A	143"	Overall Length
B	53"	Circulation
C	82"	Supports
D	46"	Diameter
E	36.75"	Support Width
F	33"	Anodes
G	53"	Height
	1"	Drain

WARRANTY**FIRST THROUGH FIVE YEAR – LIMITED WARRANTY:**

Laars warrants the lined steel tank for leakage caused by defects in materials and /or workmanship for five years from date of installation. If the tank is found to be defective in manufacture, Laars will provide replacement of tank.

ONE YEAR – LIMITED WARRANTY: Laars warrants parts to be free from manufacturing defects in material and workmanship for one year from date of installation. If parts are found to be defective, Laars will provide replacement of parts.

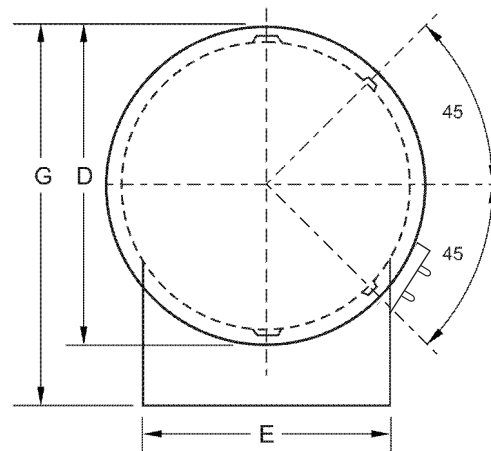
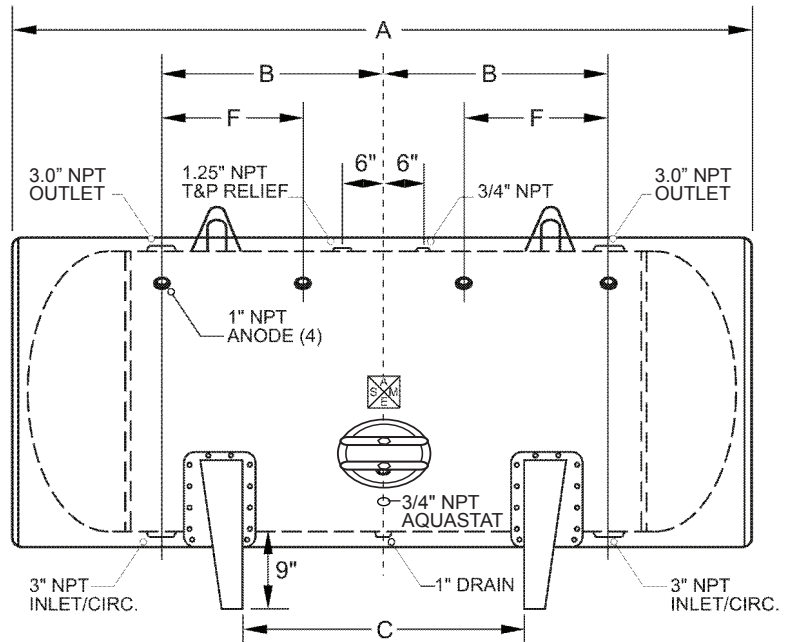
PROJECT

Customer	
Scale	Not to Scale
Date	
Customer P.O. #	
Drawing Number	JH-42-139

Horizontal Storage Tank

Size: 42-139

Submittal Data



LAARS
Heating Systems Company
 A subsidiary of **BRADFORD WHITE** Corporation

International Sales
 1869 Sismet Road, Mississauga
 Ontario, Canada L4W 1W8
 905.238.0100 • Fax 905.366.0130

Headquarters
 20 Industrial Way, Rochester, NH 03867
Customer Service, Service Advisors
 800.900.9276 • Fax 800.559.1583

Technical Support
 603.335.6300 • Fax 603.335.3355

www.Laars.com
 Litho in U.S.A. © Laars Heating Systems 1405 Doc. 4224C-19

DESIGN NOTES

Code	ASME Sec IV HLW
Design Pressure	125 psi
Test Pressure	125 psi
Heads	1/4" 414G
Shell	1/4" 516 Grade 70
Interior	Ultonium Glass Lining
Insulation	2" High Density Foam, 12.5 R
Exterior	Baked Enamel Steel Jacket
Capacity	500 gallons / 572 nominal
Tare Weight	1449 lbs.
Support	Saddles

MATERIAL SPECIFICATIONS

Heads	Carbon Steel
Shell	Carbon Steel
Couplings	Carbon Steel
Flanges	
Jacket	24 Gauge Steel
Manway	Carbon Steel
Lining	Ultonium Glass

OPENINGS / HEIGHTS

MARK	SIZE	SERVICE
A	77"	Overall Length
B	18.5"	Circulation
C	17"	Supports
D	52"	Diameter
E	42.13"	Support Width
F	59"	Height
	1"	Drain

WARRANTY**FIRST THROUGH FIVE YEAR – LIMITED WARRANTY:**

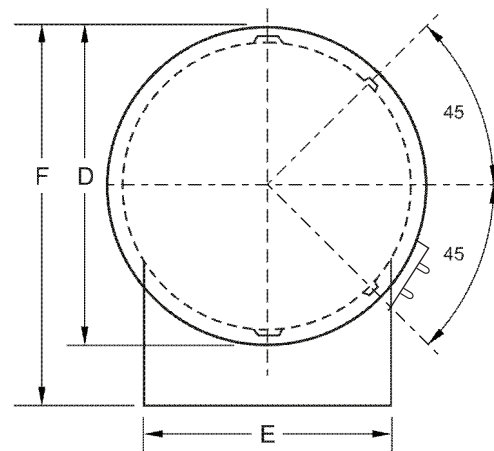
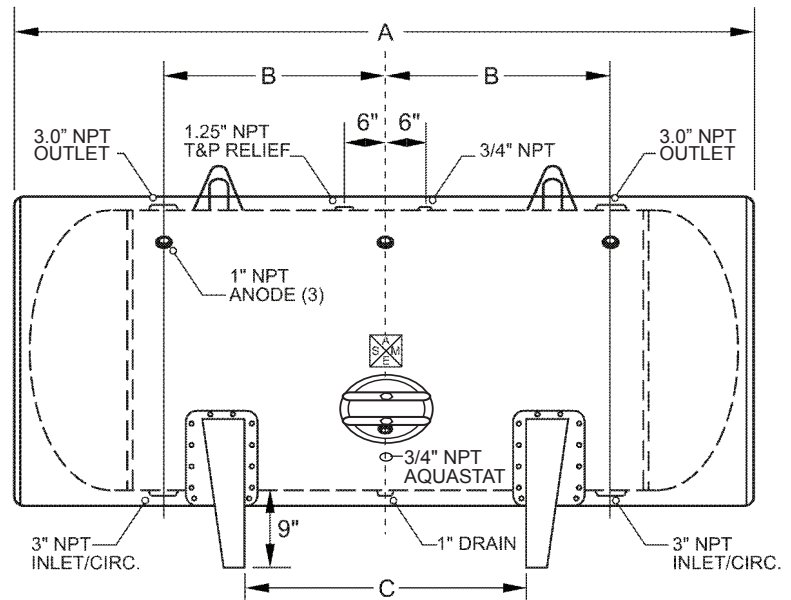
Laars warrants the lined steel tank for leakage caused by defects in materials and /or workmanship for five years from date of installation. If the tank is found to be defective in manufacture, Laars will provide replacement of tank.

ONE YEAR – LIMITED WARRANTY: Laars warrants parts to be free from manufacturing defects in material and workmanship for one year from date of installation. If parts are found to be defective, Laars will provide replacement of parts.

PROJECT

Customer	
Scale	Not to Scale
Date	
Customer P.O. #	
Drawing Number	JH-48-073

Horizontal Storage Tank

Size: 48-073
Submittal Data


LAARS
Heating Systems Company
 A subsidiary of BRADFORD WHITE Corporation

International Sales
 1869 Sismet Road, Mississauga
 Ontario, Canada L4W 1W8
 905.238.0100 • Fax 905.366.0130

Headquarters
 20 Industrial Way, Rochester, NH 03867
Customer Service, Service Advisors
 800.900.9276 • Fax 800.559.1583

Technical Support
 603.335.6300 • Fax 603.335.3355

www.Laars.com
 Litho in U.S.A. © Laars Heating Systems 1405 Doc. 4224C-20

DESIGN NOTES

Code	ASME Sec IV HLW
Design Pressure	125 psi
Test Pressure	125 psi
Heads	1/4" 414G
Shell	1/4" 516 Grade 70
Interior	Ultonium Glass Lining
Insulation	2" High Density Foam, 12.5 R
Exterior	Baked Enamel Steel Jacket
Capacity	580 gallons / 658 nominal
Tare Weight	1593 lbs.
Support	Saddles

MATERIAL SPECIFICATIONS

Heads	Carbon Steel
Shell	Carbon Steel
Couplings	Carbon Steel
Flanges	
Jacket	24 Gauge Steel
Manway	Carbon Steel
Lining	Ultonium Glass

OPENINGS / HEIGHTS

MARK	SIZE	SERVICE
A	88"	Overall Length
B	24"	Circulation
C	24"	Supports
D	52"	Diameter
E	42.13"	Support Width
F	59"	Height
	1"	Drain

WARRANTY**FIRST THROUGH FIVE YEAR – LIMITED WARRANTY:**

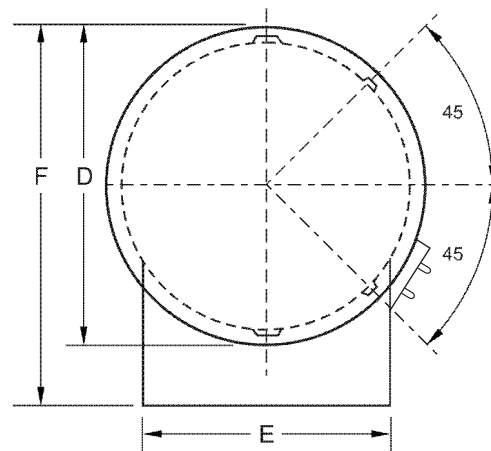
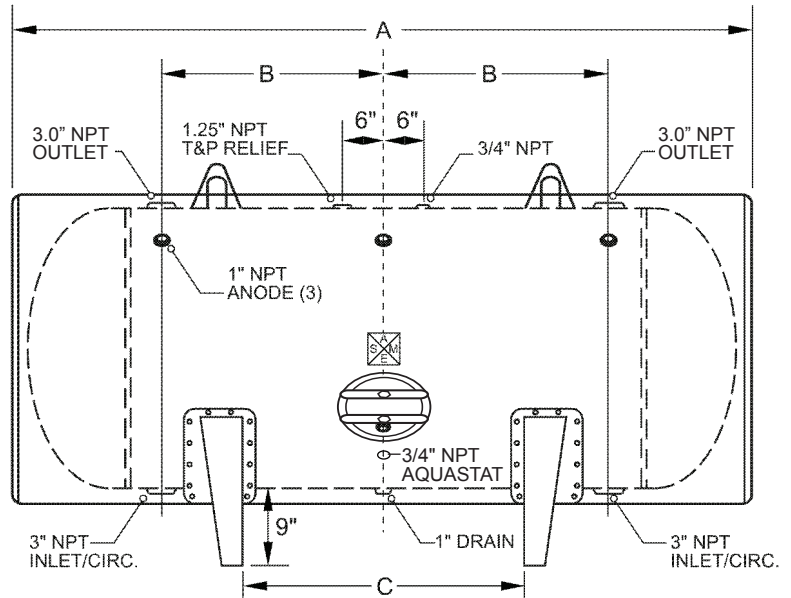
Laars warrants the lined steel tank for leakage caused by defects in materials and /or workmanship for five years from date of installation. If the tank is found to be defective in manufacture, Laars will provide replacement of tank.

ONE YEAR – LIMITED WARRANTY: Laars warrants parts to be free from manufacturing defects in material and workmanship for one year from date of installation. If parts are found to be defective, Laars will provide replacement of parts.

PROJECT

Customer	
Scale	Not to Scale
Date	
Customer P.O. #	
Drawing Number	JH-48-084

Horizontal Storage Tank

Size: 48-084
Submittal Data


LAARS®
Heating Systems Company
 A subsidiary of **BRADFORD WHITE®** Corporation

International Sales
 1869 Sismet Road, Mississauga
 Ontario, Canada L4W 1W8
 905.238.0100 • Fax 905.366.0130

Headquarters
 20 Industrial Way, Rochester, NH 03867
Customer Service, Service Advisors
 800.900.9276 • Fax 800.559.1583

Technical Support
 603.335.6300 • Fax 603.335.3355

www.Laars.com
 Litho in U.S.A. © Laars Heating Systems 1405 Doc. 4224C-21

DESIGN NOTES

Code	ASME Sec IV HLW
Design Pressure	125 psi
Test Pressure	125 psi
Heads	1/4" 414G
Shell	1/4" 516 Grade 70
Interior	Ultonium Glass Lining
Insulation	2" High Density Foam, 12.5 R
Exterior	Baked Enamel Steel Jacket
Capacity	675 gallons / 752 nominal
Tare Weight	1750 lbs.
Support	Saddles

MATERIAL SPECIFICATIONS

Heads	Carbon Steel
Shell	Carbon Steel
Couplings	Carbon Steel
Flanges	
Jacket	24 Gauge Steel
Manway	Carbon Steel
Lining	Ultonium Glass

OPENINGS / HEIGHTS

MARK	SIZE	SERVICE
A	100"	Overall Length
B	30"	Circulation
C	36"	Supports
D	52"	Diameter
E	42.13"	Support Width
F	59"	Height
	1"	Drain

WARRANTY**FIRST THROUGH FIVE YEAR – LIMITED WARRANTY:**

Laars warrants the lined steel tank for leakage caused by defects in materials and /or workmanship for five years from date of installation. If the tank is found to be defective in manufacture, Laars will provide replacement of tank.

ONE YEAR – LIMITED WARRANTY: Laars warrants parts to be free from manufacturing defects in material and workmanship for one year from date of installation. If parts are found to be defective, Laars will provide replacement of parts.

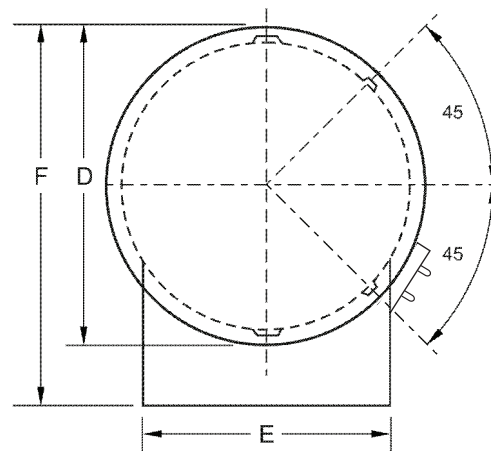
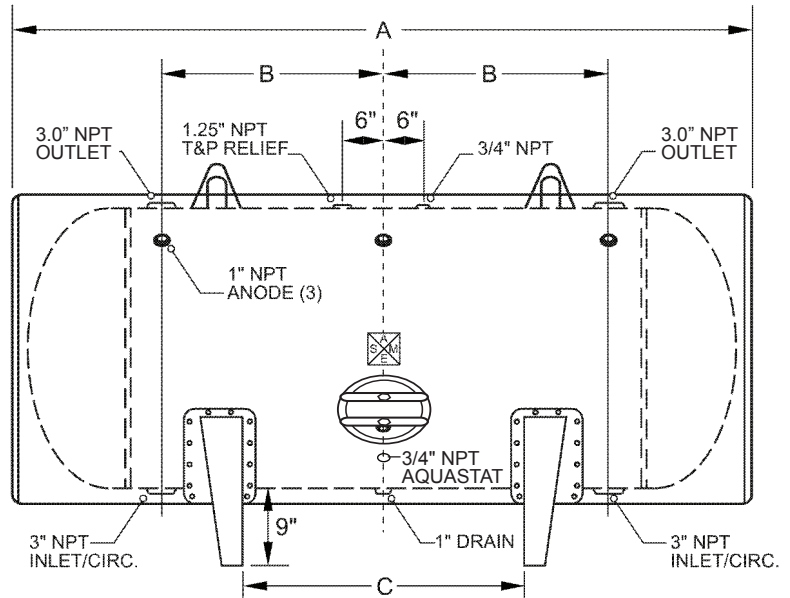
PROJECT

Customer	
Scale	Not to Scale
Date	
Customer P.O. #	
Drawing Number	JH-48-096

Horizontal Storage Tank

Size: 48-096

Submittal Data



LAARS
Heating Systems Company
 A subsidiary of **BRADFORD WHITE** Corporation

International Sales
 1869 Sismet Road, Mississauga
 Ontario, Canada L4W 1W8
 905.238.0100 • Fax 905.366.0130

Headquarters
 20 Industrial Way, Rochester, NH 03867
Customer Service, Service Advisors
 800.900.9276 • Fax 800.559.1583

Technical Support
 603.335.6300 • Fax 603.335.3355

www.Laars.com
 Litho in U.S.A. © Laars Heating Systems 1405 Doc. 4224C-22

DESIGN NOTES

Code	ASME Sec IV HLW
Design Pressure	125 psi
Test Pressure	125 psi
Heads	1/4" 414G
Shell	1/4" 516 Grade 70
Interior	Ultonium Glass Lining
Insulation	2" High Density Foam, 12.5 R
Exterior	Baked Enamel Steel Jacket
Capacity	765 gallons / 846 nominal
Tare Weight	1925 lbs.
Support	Saddles

MATERIAL SPECIFICATIONS

Heads	Carbon Steel
Shell	Carbon Steel
Couplings	Carbon Steel
Flanges	
Jacket	24 Gauge Steel
Manway	Carbon Steel
Lining	Ultonium Glass

OPENINGS / HEIGHTS

MARK	SIZE	SERVICE
A	112"	Overall Length
B	36"	Circulation
C	48"	Supports
D	52"	Diameter
E	42.13"	Support Width
F	59"	Height
	1"	Drain

WARRANTY**FIRST THROUGH FIVE YEAR – LIMITED WARRANTY:**

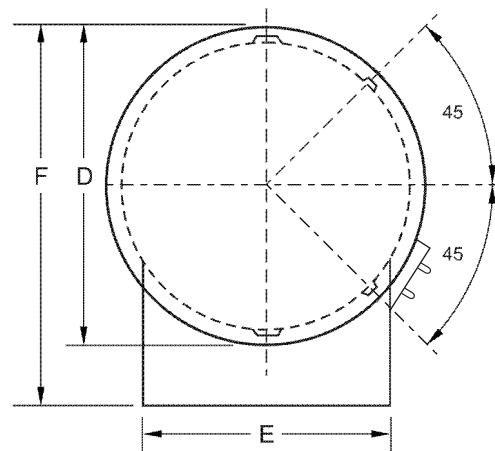
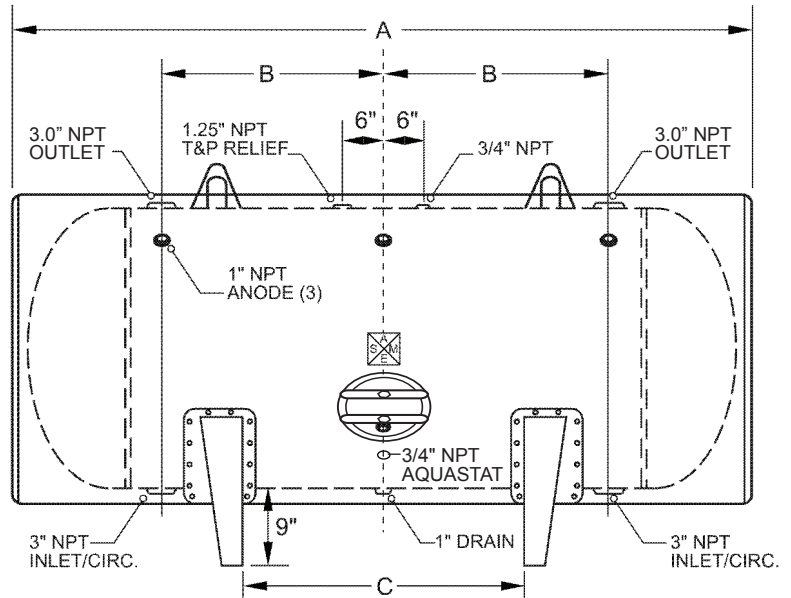
Laars warrants the lined steel tank for leakage caused by defects in materials and /or workmanship for five years from date of installation. If the tank is found to be defective in manufacture, Laars will provide replacement of tank.

ONE YEAR – LIMITED WARRANTY: Laars warrants parts to be free from manufacturing defects in material and workmanship for one year from date of installation. If parts are found to be defective, Laars will provide replacement of parts.

PROJECT

Customer	
Scale	Not to Scale
Date	
Customer P.O. #	
Drawing Number	JH-48-108

Horizontal Storage Tank

Size: 48-108**Submittal Data**

LAARS
Heating Systems Company
 A subsidiary of **BRADFORD WHITE** Corporation
International Sales
 1869 Sismet Road, Mississauga
 Ontario, Canada L4W 1W8
 905.238.0100 • Fax 905.366.0130

Headquarters
 20 Industrial Way, Rochester, NH 03867
Customer Service, Service Advisors
 800.900.9276 • Fax 800.559.1583

Technical Support
 603.335.6300 • Fax 603.335.3355

www.Laars.com
 Litho in U.S.A. © Laars Heating Systems 1405 Doc. 4224C-23

DESIGN NOTES

Code	ASME Sec IV HLW
Design Pressure	125 psi
Test Pressure	125 psi
Heads	1/4" 414G
Shell	1/4" 516 Grade 70
Interior	Ultonium Glass Lining
Insulation	2" High Density Foam, 12.5 R
Exterior	Baked Enamel Steel Jacket
Capacity	860 gallons / 940 nominal
Tare Weight	2069 lbs.
Support	Saddles

MATERIAL SPECIFICATIONS

Heads	Carbon Steel
Shell	Carbon Steel
Couplings	Carbon Steel
Flanges	
Jacket	24 Gauge Steel
Manway	Carbon Steel
Lining	Ultonium Glass

OPENINGS / HEIGHTS

MARK	SIZE	SERVICE
A	124"	Overall Length
B	42"	Circulation
C	60"	Supports
D	52"	Diameter
E	42.13"	Support Width
F	59"	Height
	1"	Drain

WARRANTY**FIRST THROUGH FIVE YEAR – LIMITED WARRANTY:**

Laars warrants the lined steel tank for leakage caused by defects in materials and /or workmanship for five years from date of installation. If the tank is found to be defective in manufacture, Laars will provide replacement of tank.

ONE YEAR – LIMITED WARRANTY: Laars warrants parts to be free from manufacturing defects in material and workmanship for one year from date of installation. If parts are found to be defective, Laars will provide replacement of parts.

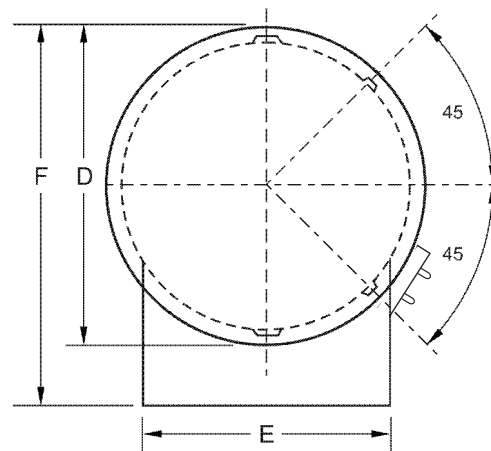
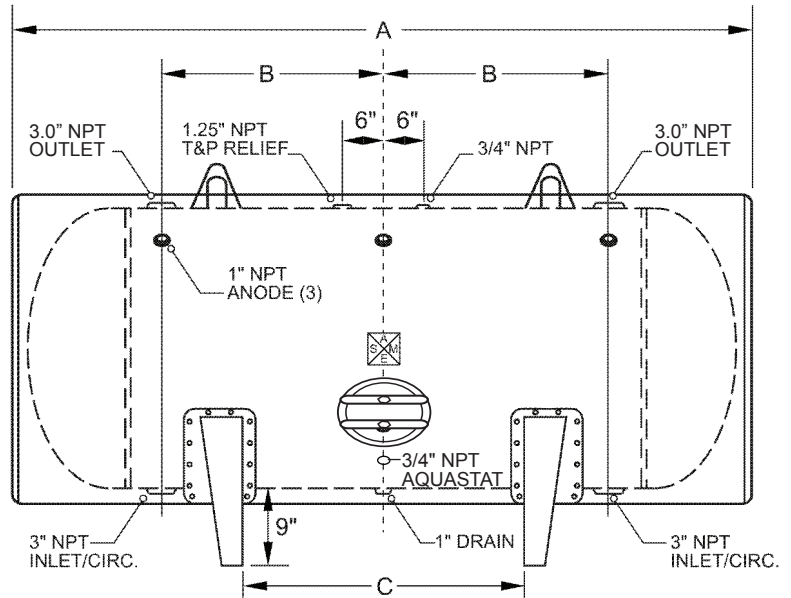
PROJECT

Customer	
Scale	Not to Scale
Date	
Customer P.O. #	
Drawing Number	JH-48-120

Horizontal Storage Tank

Size: 48-120

Submittal Data



LAARS®
Heating Systems Company
 A subsidiary of **BRADFORD WHITE®** Corporation
International Sales
 1869 Sismet Road, Mississauga
 Ontario, Canada L4W 1W8
 905.238.0100 • Fax 905.366.0130

Headquarters
 20 Industrial Way, Rochester, NH 03867
Customer Service, Service Advisors
 800.900.9276 • Fax 800.559.1583

Technical Support
 603.335.6300 • Fax 603.335.3355

www.Laars.com
 Litho in U.S.A. © Laars Heating Systems 1405 Doc. 4224C-24

DESIGN NOTES

Code	ASME Sec IV HLW
Design Pressure	125 psi
Test Pressure	125 psi
Heads	1/4" 414G
Shell	1/4" 516 Grade 70
Interior	Ultonium Glass Lining
Insulation	2" High Density Foam, 12.5 R
Exterior	Baked Enamel Steel Jacket
Capacity	1040 gallons / 1128 nominal
Tare Weight	2407 lbs.
Support	Saddles

MATERIAL SPECIFICATIONS

Heads	Carbon Steel
Shell	Carbon Steel
Couplings	Carbon Steel
Flanges	
Jacket	24 Gauge Steel
Manway	Carbon Steel
Lining	Ultonium Glass

OPENINGS / HEIGHTS

MARK	SIZE	SERVICE
A	145"	Overall Length
B	52.5"	Circulation
C	82"	Supports
D	52"	Diameter
E	42.13"	Support Width
F	33"	Anodes
G	59"	Height
	1"	Drain

WARRANTY**FIRST THROUGH FIVE YEAR – LIMITED WARRANTY:**

Laars warrants the lined steel tank for leakage caused by defects in materials and /or workmanship for five years from date of installation. If the tank is found to be defective in manufacture, Laars will provide replacement of tank.

ONE YEAR – LIMITED WARRANTY: Laars warrants parts to be free from manufacturing defects in material and workmanship for one year from date of installation. If parts are found to be defective, Laars will provide replacement of parts.

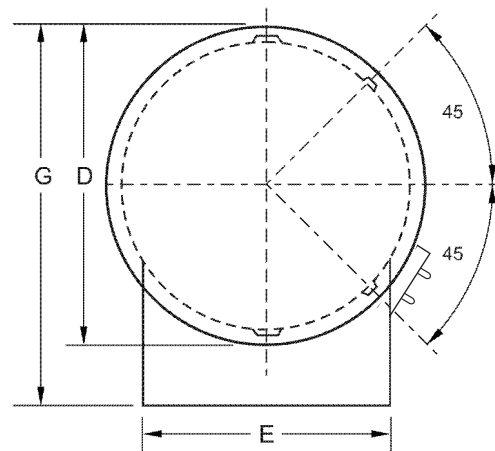
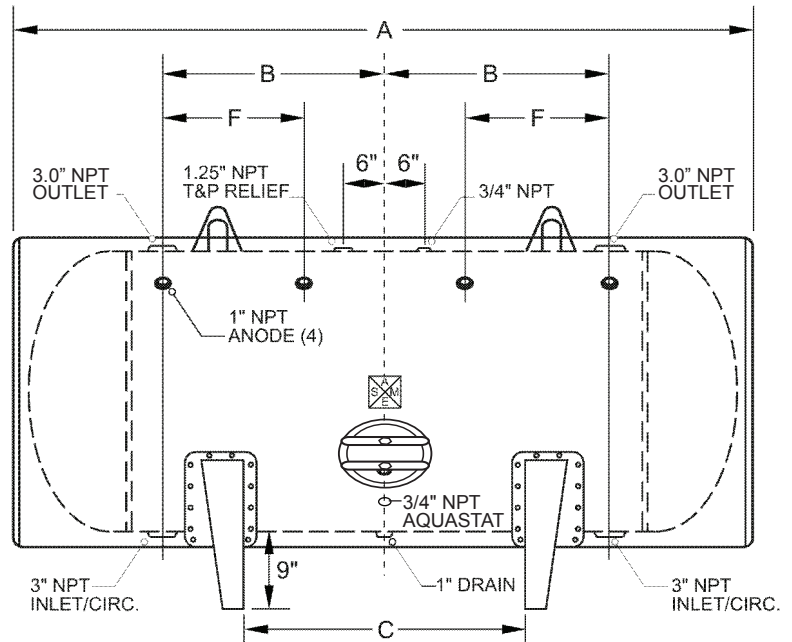
PROJECT

Customer	
Scale	Not to Scale
Date	
Customer P.O. #	
Drawing Number	JH-48-141

Horizontal Storage Tank

Size: 48-141

Submittal Data



LAARS
Heating Systems Company
 A subsidiary of **BRADFORD WHITE** Corporation

International Sales
 1869 Sismet Road, Mississauga
 Ontario, Canada L4W 1W8
 905.238.0100 • Fax 905.366.0130

Headquarters
 20 Industrial Way, Rochester, NH 03867
Customer Service, Service Advisors
 800.900.9276 • Fax 800.559.1583

Technical Support
 603.335.6300 • Fax 603.335.3355

www.Laars.com
 Litho in U.S.A. © Laars Heating Systems 1405 Doc. 4224C-25