

DESIGN NOTES

Code	ASME Sec IV HLW
Design Pressure	125 psi
Test Pressure	125 psi
Heads	3/16" 414G
Shell	10 Gauge 414 G
Interior	Ultonium Glass Lining
Exterior	Primed Painted
Radiograph	None
Capacity	175 gallons / 193 nominal
Tare Weight	365 lbs.
Support	2 Saddles

MATERIAL SPECIFICATIONS

Heads	Carbon Steel
Shell	Carbon Steel
Couplings	Carbon Steel
Flanges	
Pipe	
Manway	
Lining	Ultonium Glass

OPENINGS / HEIGHTS

MARK	SIZE	DESCRIPTION
A	63"	Overall Length
B	18"	Circulation
C	18"	Supports
D	30"	Diameter
E	26.38"	Support Width
F	39"	Height
	1"	Drain

WARRANTY**FIRST THROUGH FIVE YEAR – LIMITED WARRANTY:**

Laars warrants the lined steel tank for leakage caused by defects in materials and /or workmanship for five years from date of installation. If the tank is found to be defective in manufacture, Laars will provide replacement of tank.

ONE YEAR – LIMITED WARRANTY: Laars warrants parts to be free from manufacturing defects in material and workmanship for one year from date of installation. If parts are found to be defective, Laars will provide replacement of parts.

PROJECT

Customer

Scale Not to Scale

Date

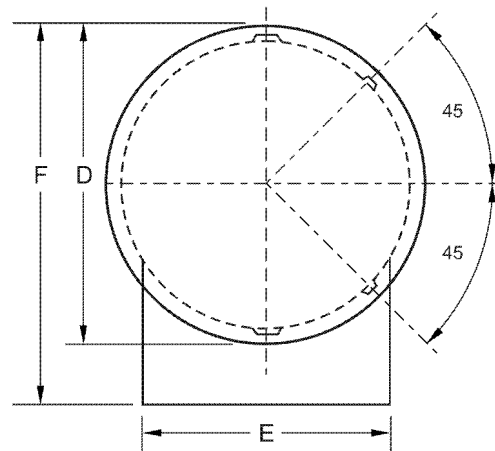
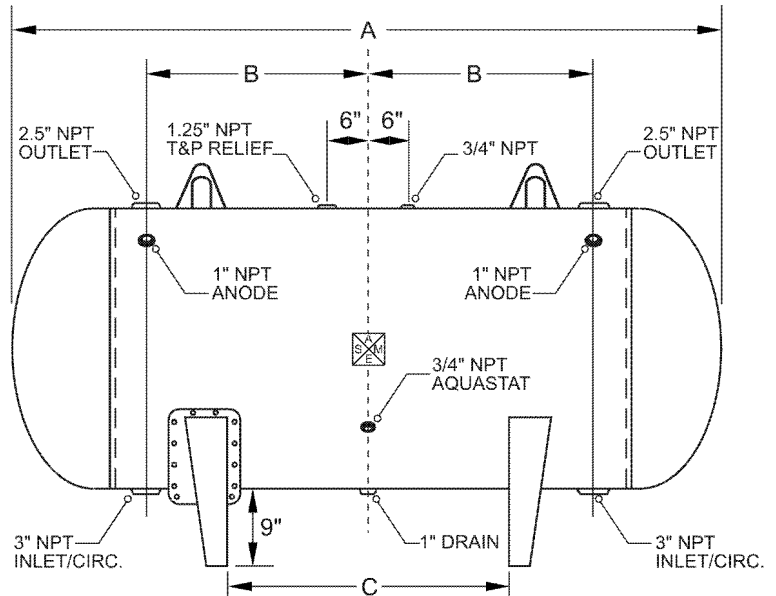
Customer P.O. #

Drawing Number BH-30-063

Horizontal Storage Tank

Size: 30-063

Submittal Data



LAARS
Heating Systems Company
A subsidiary of BRADFORD WHITE Corporation

International Sales
1869 Sismet Road, Mississauga
Ontario, Canada L4W 1W8
905.238.0100 • Fax 905.366.0130

Headquarters
20 Industrial Way, Rochester, NH 03867
Customer Service, Service Advisors
800.900.9276 • Fax 800.559.1583

Technical Support
603.335.6300 • Fax 603.335.3355

www.Laars.com

Litho in U.S.A. © Laars Heating Systems 1405 Document 4223C-1

DESIGN NOTES

Code	ASME Sec IV HLW
Design Pressure	125 psi
Test Pressure	125 psi
Heads	3/16" 414G
Shell	10 Gauge 414 G
Interior	Ultonium Glass Lining
Exterior	Primed Painted
Radiograph	None
Capacity	210 gallons / 229 nominal
Tare Weight	412 lbs.
Support	2 Saddles

MATERIAL SPECIFICATIONS

Heads	Carbon Steel
Shell	Carbon Steel
Couplings	Carbon Steel
Flanges	
Pipe	
Manway	
Lining	Ultonium Glass

OPENINGS / HEIGHTS

MARK	SIZE	DESCRIPTION
A	75"	Overall Length
B	24"	Circulation
C	24"	Supports
D	30"	Diameter
E	26.38"	Support Width
F	39"	Height
	1"	Drain

WARRANTY**FIRST THROUGH FIVE YEAR – LIMITED WARRANTY:**

Laars warrants the lined steel tank for leakage caused by defects in materials and /or workmanship for five years from date of installation. If the tank is found to be defective in manufacture, Laars will provide replacement of tank.

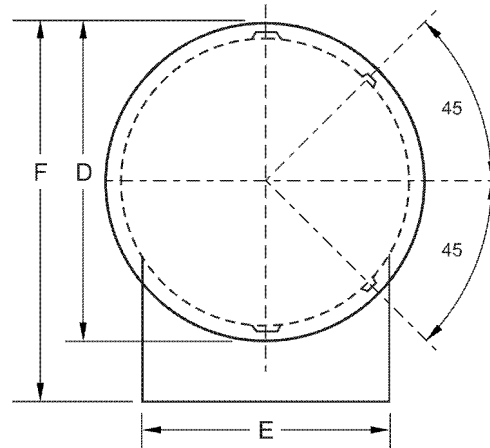
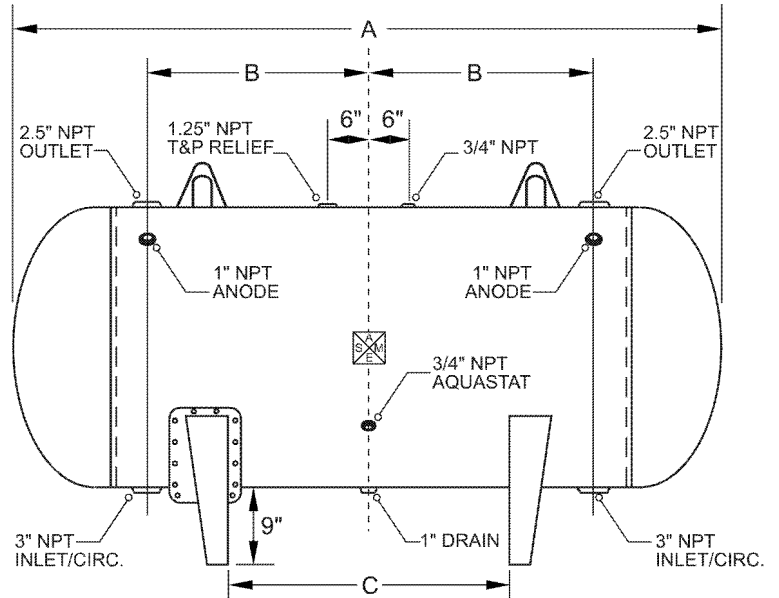
ONE YEAR – LIMITED WARRANTY: Laars warrants parts to be free from manufacturing defects in material and workmanship for one year from date of installation. If parts are found to be defective, Laars will provide replacement of parts.

PROJECT

Customer	
Scale	Not to Scale
Date	
Customer P.O. #	
Drawing Number	BH-30-075

Horizontal Storage Tank

Size: 30-075

Submittal Data

LAARS
Heating Systems Company
 A subsidiary of BRADFORD WHITE Corporation

International Sales
 1869 Sismet Road, Mississauga
 Ontario, Canada L4W 1W8
 905.238.0100 • Fax 905.366.0130

Headquarters
 20 Industrial Way, Rochester, NH 03867
Customer Service, Service Advisors
 800.900.9276 • Fax 800.559.1583

Technical Support
 603.335.6300 • Fax 603.335.3355

www.Laars.com

Litho in U.S.A. © Laars Heating Systems 1405 Document 4223C-2

DESIGN NOTES

Code	ASME Sec IV HLW
Design Pressure	125 psi
Test Pressure	125 psi
Heads	3/16" 516-20
Shell	3/16" 516 Grade 70
Interior	Ulonium Glass Lining
Exterior	Primed Painted
Radiograph	None
Capacity	240 gallons / 260 nominal
Tare Weight	545 lbs.
Support	2 Saddles

MATERIAL SPECIFICATIONS

Heads	Carbon Steel
Shell	Carbon Steel
Couplings	Carbon Steel
Flanges	
Pipe	
Manway	
Lining	Ulonium Glass

OPENINGS / HEIGHTS

MARK	SIZE	DESCRIPTION
A	85"	Overall Length
B	29"	Circulation
C	34"	Supports
D	30"	Diameter
E	26.38"	Support Width
F	39"	Height
	1"	Drain

WARRANTY**FIRST THROUGH FIVE YEAR – LIMITED WARRANTY:**

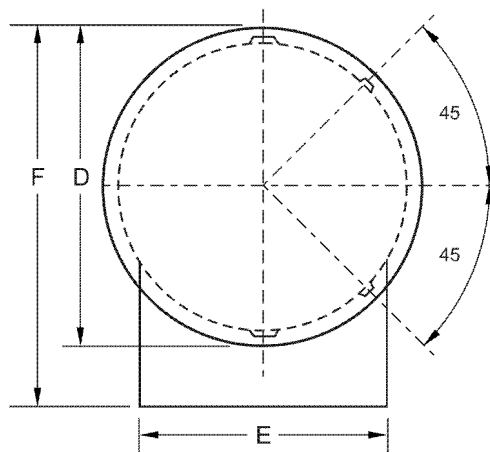
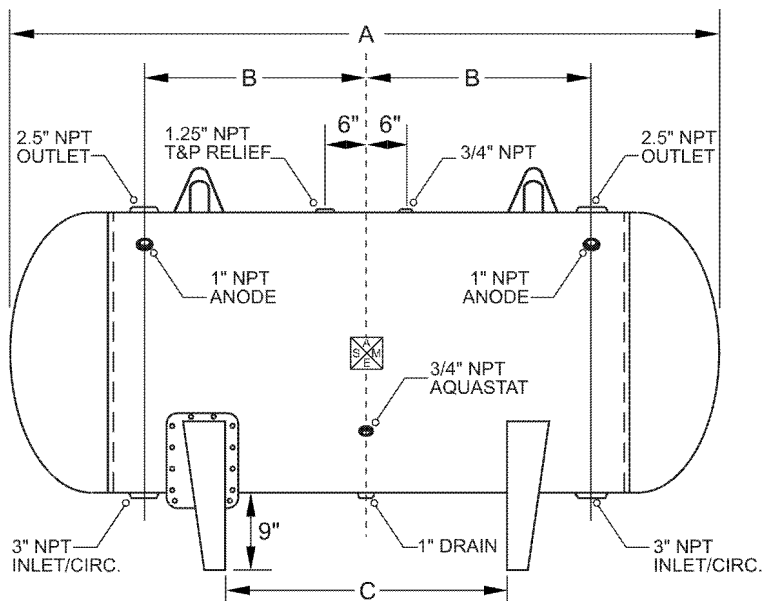
Laars warrants the lined steel tank for leakage caused by defects in materials and /or workmanship for five years from date of installation. If the tank is found to be defective in manufacture, Laars will provide replacement of tank.

ONE YEAR – LIMITED WARRANTY: Laars warrants parts to be free from manufacturing defects in material and workmanship for one year from date of installation. If parts are found to be defective, Laars will provide replacement of parts.

PROJECT

Customer	
Scale	Not to Scale
Date	
Customer P.O. #	
Drawing Number	BH-30-0875

Horizontal Storage Tank

Size: 30-085**Submittal Data**

LAARS
Heating Systems Company
 A subsidiary of **BRADFORD WHITE** Corporation

International Sales
 1869 Sismet Road, Mississauga
 Ontario, Canada L4W 1W8
 905.238.0100 • Fax 905.366.0130

Headquarters
 20 Industrial Way, Rochester, NH 03867
Customer Service, Service Advisors
 800.900.9276 • Fax 800.559.1583

Technical Support
 603.335.6300 • Fax 603.335.3355
www.Laars.com

Litho in U.S.A. © Laars Heating Systems 1405 Document 4223C-3

	DESIGN NOTES
Code	ASME Sec IV HLW
Design Pressure	125 psi
Test Pressure	125 psi
Heads	3/16" 414G
Shell	10 Gauge 414G
Interior	Ultonium Glass Lining
Exterior	Primed Painted
Radiograph	None
Capacity	280 gallons / 303 nominal
Tare Weight	508 lbs.
Support	2 Saddles

	MATERIAL SPECIFICATIONS
Heads	Carbon Steel
Shell	Carbon Steel
Couplings	Carbon Steel
Flanges	
Pipe	
Manway	
Lining	Ulonium Glass

		OPENINGS / HEIGHTS
MARK	SIZE	DESCRIPTION
A	99"	Overall Length
B	36"	Circulation
C	48"	Supports
D	30"	Diameter
E	26.38"	Support Width
F	39"	Height
	1"	Drain

WARRANTY

Laars warrants the lined steel tank for leakage caused by defects in materials and /or workmanship for five years from date of installation. If the tank is found to be defective in manufacture, Laars will provide replacement of tank.

ONE YEAR – LIMITED WARRANTY: Laars warrants parts to be free from manufacturing defects in material and workmanship for one year from date of installation. If parts are found to be defective, Laars will provide replacement of parts.

PROJECT

Customer

Scale	Not to Scale
-------	--------------

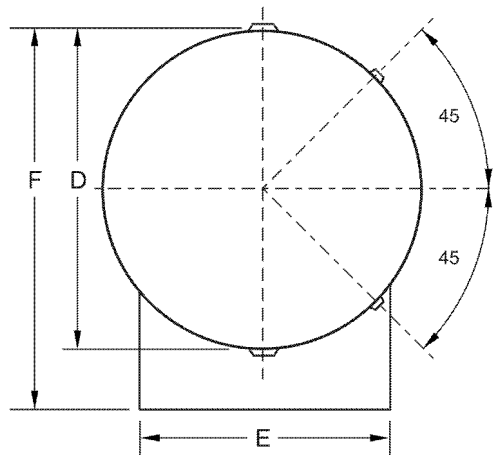
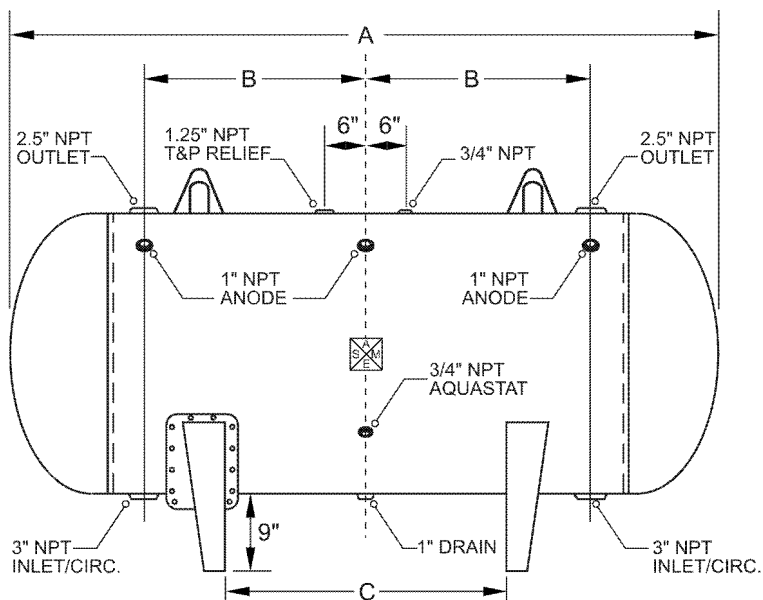
Date _____

Customer P.O. #

Drawing Number BH-30-099

Horizontal Storage Tank

Size: 30-99 *Submittal Data*



LAARS® 
Heating Systems Company
A subsidiary of **BRADFORD WHITE** Corporation

International Sales
1869 Sismet Road, Mississauga
Ontario, Canada L4W 1W8
905.238.0100 • Fax 905.366.0130

Headquarters
20 Industrial Way, Rochester, NH 03867
Customer Service, Service Advisors
800.900.9276 • Fax 800.559.1583

Technical Support
603.335.6300 • Fax 603.335.3355

www.Laars.com

Litho in U.S.A. © Laars Heating Systems 1405 Document 4223C-4

DESIGN NOTES

Code	ASME Sec IV HLW
Design Pressure	125 psi
Test Pressure	125 psi
Heads	3/16" 414G
Shell	10 Gauge 414G
Interior	Ultonium Glass Lining
Exterior	Primed Painted
Radiograph	None
Capacity	320 gallons / 340 nominal
Tare Weight	555 lbs.
Support	2 Saddles

MATERIAL SPECIFICATIONS

Heads	Carbon Steel
Shell	Carbon Steel
Couplings	Carbon Steel
Flanges	
Pipe	
Manway	
Lining	Ultonium Glass

OPENINGS / HEIGHTS

MARK	SIZE	DESCRIPTION
A	111"	Overall Length
B	42"	Circulation
C	60"	Supports
D	30"	Diameter
E	26.38"	Support Width
F	39"	Height
	1"	Drain

WARRANTY**FIRST THROUGH FIVE YEAR – LIMITED WARRANTY:**

Laars warrants the lined steel tank for leakage caused by defects in materials and /or workmanship for five years from date of installation. If the tank is found to be defective in manufacture, Laars will provide replacement of tank.

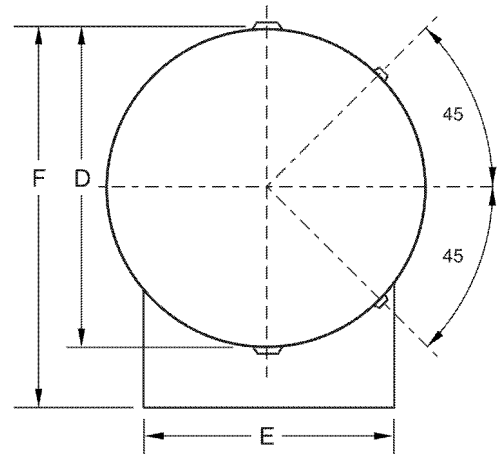
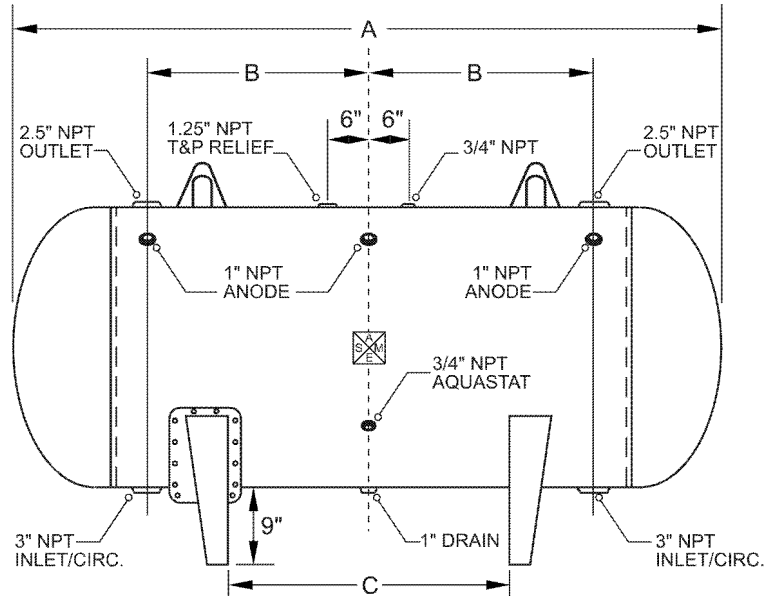
ONE YEAR – LIMITED WARRANTY: Laars warrants parts to be free from manufacturing defects in material and workmanship for one year from date of installation. If parts are found to be defective, Laars will provide replacement of parts.

PROJECT

Customer	
Scale	Not to Scale
Date	
Customer P.O. #	
Drawing Number	BH-30-111

Horizontal Storage Tank

Size: 30-111 *Submittal Data*



LAARS
Heating Systems Company
 A subsidiary of BRADFORD WHITE Corporation

International Sales
 1869 Sismet Road, Mississauga
 Ontario, Canada L4W 1W8
 905.238.0100 • Fax 905.366.0130

Headquarters
 20 Industrial Way, Rochester, NH 03867
Customer Service, Service Advisors
 800.900.9276 • Fax 800.559.1583

Technical Support
 603.335.6300 • Fax 603.335.3355

www.Laars.com

Litho in U.S.A. © Laars Heating Systems 1405 Document 4223C-5

DESIGN NOTES

Code	ASME Sec IV HLW
Design Pressure	125 psi
Test Pressure	125 psi
Heads	3/16" 414G
Shell	3/16" 516 Grade 70
Interior	Ultonium Glass Lining
Exterior	Primed Painted
Radiograph	None
Capacity	285 gallons / 317 nominal
Tare Weight	576 lbs.
Support	2 Saddles

MATERIAL SPECIFICATIONS

Heads	Carbon Steel
Shell	Carbon Steel
Couplings	Carbon Steel
Flanges	
Pipe	
Manway	
Lining	Ultonium Glass

OPENINGS / HEIGHTS

MARK	SIZE	DESCRIPTION
A	72"	Overall Length
B	21"	Circulation
C	18"	Supports
D	36"	Diameter
E	31.5"	Support Width
F	45"	Height
	1"	Drain

WARRANTY**FIRST THROUGH FIVE YEAR – LIMITED WARRANTY:**

Laars warrants the lined steel tank for leakage caused by defects in materials and /or workmanship for five years from date of installation. If the tank is found to be defective in manufacture, Laars will provide replacement of tank.

ONE YEAR – LIMITED WARRANTY: Laars warrants parts to be free from manufacturing defects in material and workmanship for one year from date of installation. If parts are found to be defective, Laars will provide replacement of parts.

PROJECT

Customer

Scale Not to Scale

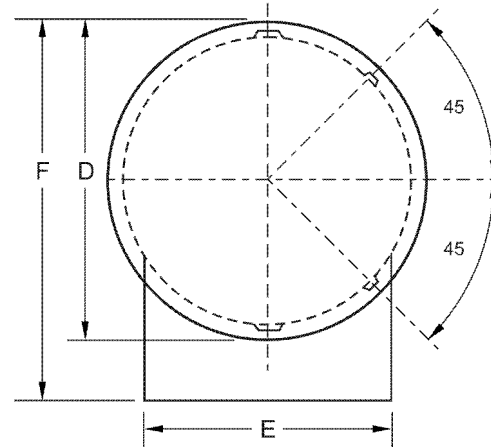
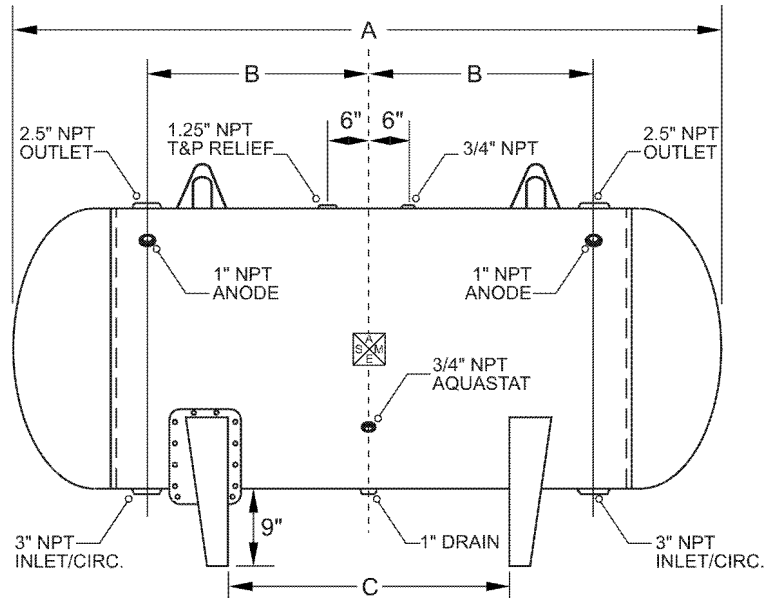
Date

Customer P.O. #

Drawing Number BH-36-072

Horizontal Storage Tank

Size: 36-072 *Submittal Data*



LAARS
Heating Systems Company
A subsidiary of BRADFORD WHITE Corporation

International Sales
1869 Sismet Road, Mississauga
Ontario, Canada L4W 1W8
905.238.0100 • Fax 905.366.0130

Headquarters
20 Industrial Way, Rochester, NH 03867
Customer Service, Service Advisors
800.900.9276 • Fax 800.559.1583

Technical Support
603.335.6300 • Fax 603.335.3355

www.Laars.com

Litho in U.S.A. © Laars Heating Systems 1405 Document 4223C-6

DESIGN NOTES

Code	ASME Sec IV HLW
Design Pressure	125 psi
Test Pressure	125 psi
Heads	3/16" 414G
Shell	3/16" 516 Grade 70
Interior	Ultonium Glass Lining
Exterior	Primed Painted
Radiograph	None
Capacity	310 gallons / 344 nominal
Tare Weight	614 lbs.
Support	2 Saddles

MATERIAL SPECIFICATIONS

Heads	Carbon Steel
Shell	Carbon Steel
Couplings	Carbon Steel
Flanges	
Pipe	
Manway	
Lining	Ultonium Glass

OPENINGS / HEIGHTS

MARK	SIZE	DESCRIPTION
A	78"	Overall Length
B	24"	Circulation
C	24"	Supports
D	36"	Diameter
E	31.5"	Support Width
F	45"	Height
	1"	Drain

WARRANTY**FIRST THROUGH FIVE YEAR – LIMITED WARRANTY:**

Laars warrants the lined steel tank for leakage caused by defects in materials and /or workmanship for five years from date of installation. If the tank is found to be defective in manufacture, Laars will provide replacement of tank.

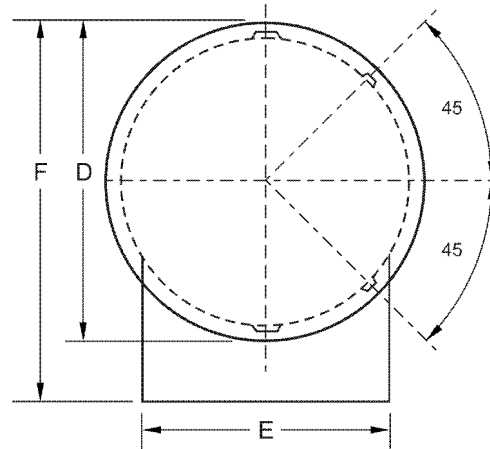
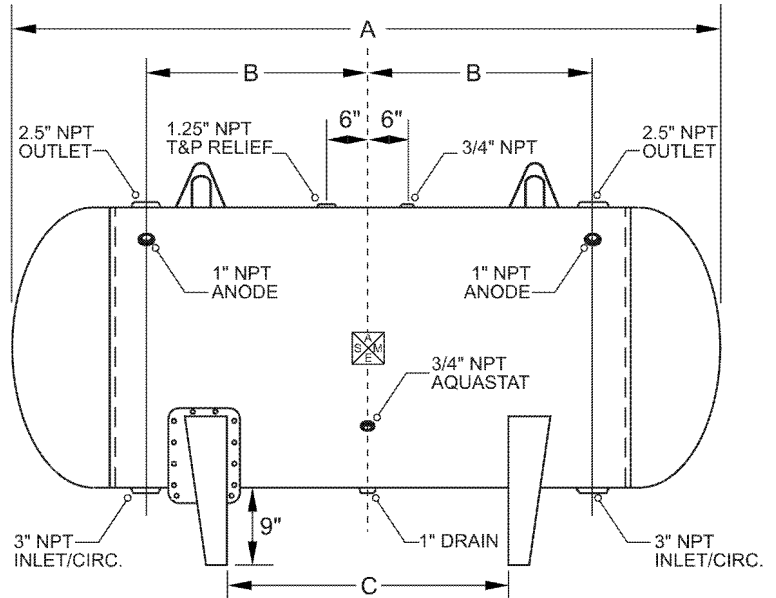
ONE YEAR – LIMITED WARRANTY: Laars warrants parts to be free from manufacturing defects in material and workmanship for one year from date of installation. If parts are found to be defective, Laars will provide replacement of parts.

PROJECT

Customer	
Scale	Not to Scale
Date	
Customer P.O. #	
Drawing Number	BH-36-078

Horizontal Storage Tank

Size: 36-078 *Submittal Data*



LAARS
Heating Systems Company
 A subsidiary of BRADFORD WHITE Corporation

International Sales
 1869 Sismet Road, Mississauga
 Ontario, Canada L4W 1W8
 905.238.0100 • Fax 905.366.0130

Headquarters
 20 Industrial Way, Rochester, NH 03867
Customer Service, Service Advisors
 800.900.9276 • Fax 800.559.1583

Technical Support
 603.335.6300 • Fax 603.335.3355

www.Laars.com

Litho in U.S.A. © Laars Heating Systems 1405 Document 4223C-7

DESIGN NOTES

Code	ASME Sec IV HLW
Design Pressure	125 psi
Test Pressure	125 psi
Heads	3/16" 414G
Shell	3/16" 516 Grade 70
Interior	Ultonium Glass Lining
Exterior	Primed Painted
Radiograph	None
Capacity	340 gallons / 375 nominal
Tare Weight	659 lbs.
Support	2 Saddles

MATERIAL SPECIFICATIONS

Heads	Carbon Steel
Shell	Carbon Steel
Couplings	Carbon Steel
Flanges	
Pipe	
Manway	
Lining	Ultonium Glass

OPENINGS / HEIGHTS

MARK	SIZE	DESCRIPTION
A	85"	Overall Length
B	27.5"	Circulation
C	31"	Supports
D	36"	Diameter
E	31.5"	Support Width
F	45"	Height
	1"	Drain

WARRANTY**FIRST THROUGH FIVE YEAR – LIMITED WARRANTY:**

Laars warrants the lined steel tank for leakage caused by defects in materials and /or workmanship for five years from date of installation. If the tank is found to be defective in manufacture, Laars will provide replacement of tank.

ONE YEAR – LIMITED WARRANTY: Laars warrants parts to be free from manufacturing defects in material and workmanship for one year from date of installation. If parts are found to be defective, Laars will provide replacement of parts.

PROJECT

Customer

Scale Not to Scale

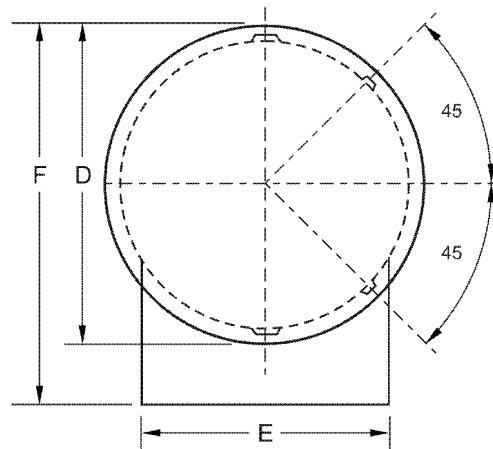
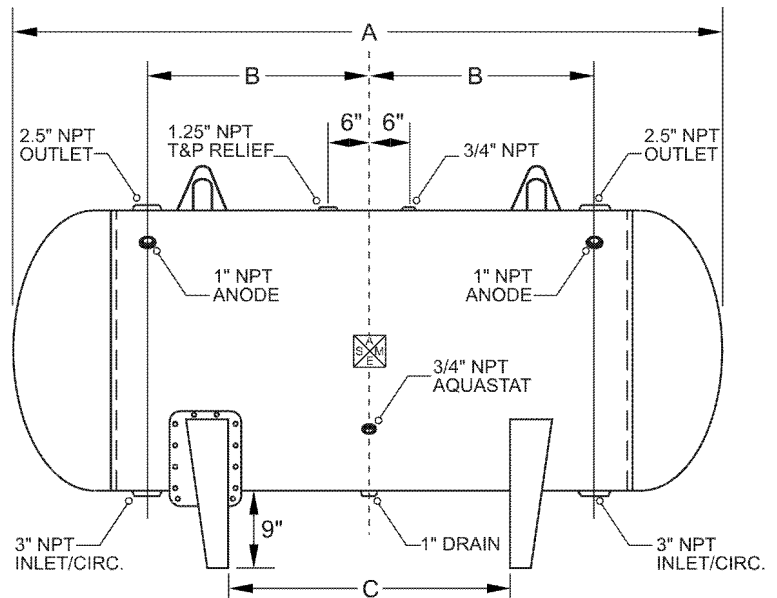
Date

Customer P.O. #

Drawing Number BH-36-085

Horizontal Storage Tank

Size: 36-085 *Submittal Data*



LAARS
Heating Systems Company
A subsidiary of BRADFORD WHITE Corporation

International Sales
1869 Sismet Road, Mississauga
Ontario, Canada L4W 1W8
905.238.0100 • Fax 905.366.0130

Headquarters
20 Industrial Way, Rochester, NH 03867
Customer Service, Service Advisors
800.900.9276 • Fax 800.559.1583

Technical Support
603.335.6300 • Fax 603.335.3355

www.Laars.com

Litho in U.S.A. © Laars Heating Systems 1405 Document 4223C-8

DESIGN NOTES

Code	ASME Sec IV HLW
Design Pressure	125 psi
Test Pressure	125 psi
Heads	3/16" 414G
Shell	3/16" 516 Grade 70
Interior	Ultonium Glass Lining
Exterior	Primed Painted
Radiograph	None
Capacity	360 gallons / 397 nominal
Tare Weight	690 lbs.
Support	2 Saddles

MATERIAL SPECIFICATIONS

Heads	Carbon Steel
Shell	Carbon Steel
Couplings	Carbon Steel
Flanges	
Pipe	
Manway	
Lining	Ultonium Glass

OPENINGS / HEIGHTS

MARK	SIZE	DESCRIPTION
A	90"	Overall Length
B	30"	Circulation
C	36"	Supports
D	36"	Diameter
E	31.69"	Support Width
F	45"	Height
	1"	Drain

WARRANTY**FIRST THROUGH FIVE YEAR – LIMITED WARRANTY:**

Laars warrants the lined steel tank for leakage caused by defects in materials and /or workmanship for five years from date of installation. If the tank is found to be defective in manufacture, Laars will provide replacement of tank.

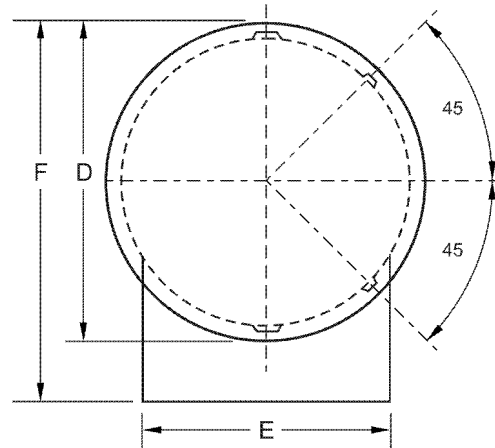
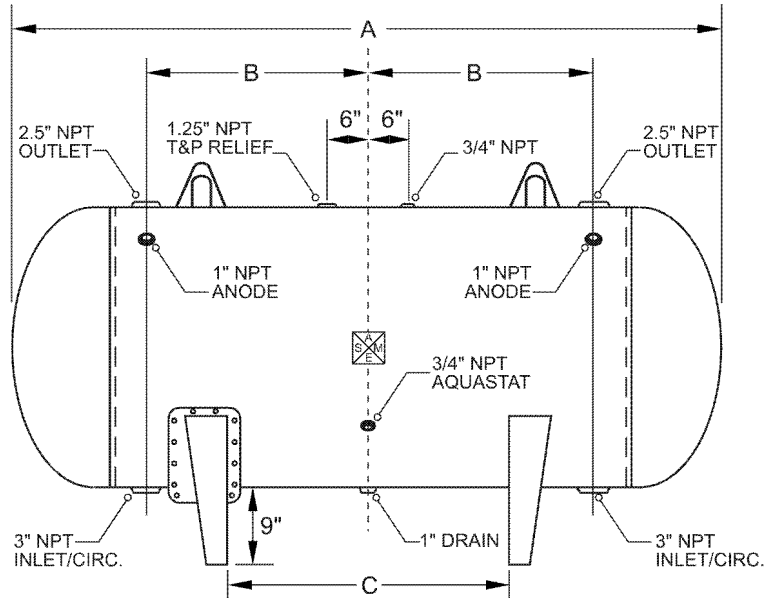
ONE YEAR – LIMITED WARRANTY: Laars warrants parts to be free from manufacturing defects in material and workmanship for one year from date of installation. If parts are found to be defective, Laars will provide replacement of parts.

PROJECT

Customer	
Scale	Not to Scale
Date	
Customer P.O. #	
Drawing Number	BH-36-090

Horizontal Storage Tank

Size: 36-090 *Submittal Data*



LAARS
Heating Systems Company
 A subsidiary of **BRADFORD WHITE** Corporation
International Sales
 1869 Sismet Road, Mississauga
 Ontario, Canada L4W 1W8
 905.238.0100 • Fax 905.366.0130

Headquarters
 20 Industrial Way, Rochester, NH 03867
Customer Service, Service Advisors
 800.900.9276 • Fax 800.559.1583

Technical Support
 603.335.6300 • Fax 603.335.3355

www.Laars.com

Litho in U.S.A. © Laars Heating Systems 1405 Document 4223C-9

DESIGN NOTES

Code	ASME Sec IV HLW
Design Pressure	125 psi
Test Pressure	125 psi
Heads	3/16" 414G
Shell	3/16" 516 Grade 70
Interior	Ultonium Glass Lining
Exterior	Primed Painted
Radiograph	None
Capacity	415 gallons / 449 nominal
Tare Weight	768 lbs.
Support	2 Saddles

MATERIAL SPECIFICATIONS

Heads	Carbon Steel
Shell	Carbon Steel
Couplings	Carbon Steel
Flanges	
Pipe	
Manway	
Lining	Ultonium Glass

OPENINGS / HEIGHTS

MARK	SIZE	DESCRIPTION
A	102"	Overall Length
B	36"	Circulation
C	48"	Supports
D	36"	Diameter
E	31.5"	Support Width
F	45"	Height
	1"	Drain

WARRANTY**FIRST THROUGH FIVE YEAR – LIMITED WARRANTY:**

Laars warrants the lined steel tank for leakage caused by defects in materials and /or workmanship for five years from date of installation. If the tank is found to be defective in manufacture, Laars will provide replacement of tank.

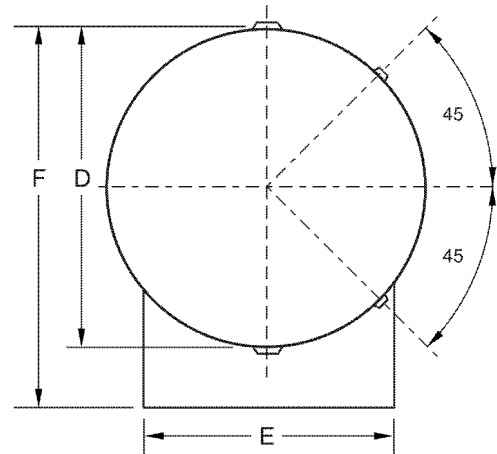
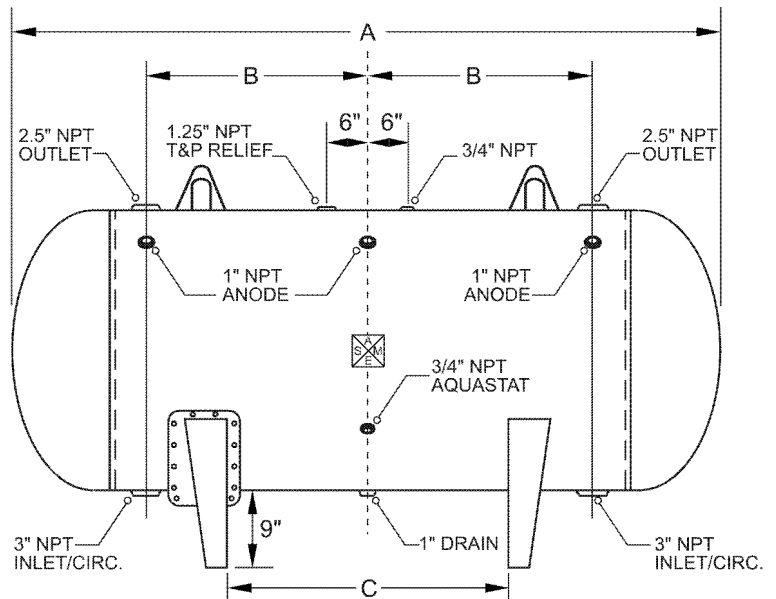
ONE YEAR – LIMITED WARRANTY: Laars warrants parts to be free from manufacturing defects in material and workmanship for one year from date of installation. If parts are found to be defective, Laars will provide replacement of parts.

PROJECT

Customer	
Scale	Not to Scale
Date	
Customer P.O. #	
Drawing Number	BH-36-102

Horizontal Storage Tank

Size: 36-102 *Submittal Data*



LAARS
Heating Systems Company
 A subsidiary of BRADFORD WHITE Corporation

International Sales
 1869 Sismet Road, Mississauga
 Ontario, Canada L4W 1W8
 905.238.0100 • Fax 905.366.0130

Headquarters
 20 Industrial Way, Rochester, NH 03867
Customer Service, Service Advisors
 800.900.9276 • Fax 800.559.1583

Technical Support
 603.335.6300 • Fax 603.335.3355
www.Laars.com

Litho in U.S.A. © Laars Heating Systems 1405 Document 4223C-10

DESIGN NOTES

Code	ASME Sec IV HLW
Design Pressure	125 psi
Test Pressure	125 psi
Heads	3/16" 414G
Shell	3/16" 516 Grade 70
Interior	Ultonium Glass Lining
Exterior	Primed Painted
Radiograph	None
Capacity	465 gallons / 502 nominal
Tare Weight	844 lbs.
Support	2 Saddles

MATERIAL SPECIFICATIONS

Heads	Carbon Steel
Shell	Carbon Steel
Couplings	Carbon Steel
Flanges	
Pipe	
Manway	
Lining	Ultonium Glass

OPENINGS / HEIGHTS

MARK	SIZE	DESCRIPTION
A	114"	Overall Length
B	42"	Circulation
C	60"	Supports
D	36"	Diameter
E	31.69"	Support Width
F	45"	Height
	1"	Drain

WARRANTY**FIRST THROUGH FIVE YEAR – LIMITED WARRANTY:**

Laars warrants the lined steel tank for leakage caused by defects in materials and /or workmanship for five years from date of installation. If the tank is found to be defective in manufacture, Laars will provide replacement of tank.

ONE YEAR – LIMITED WARRANTY: Laars warrants parts to be free from manufacturing defects in material and workmanship for one year from date of installation. If parts are found to be defective, Laars will provide replacement of parts.

PROJECT

Customer

Scale Not to Scale

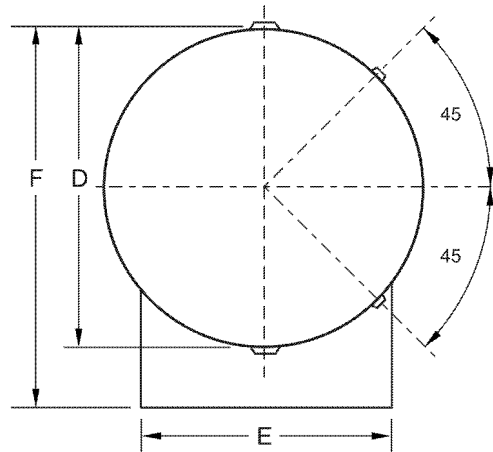
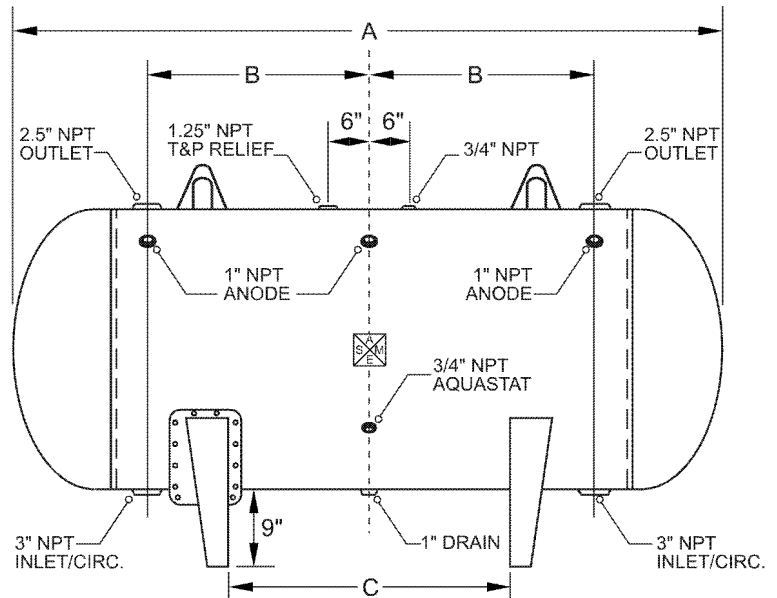
Date

Customer P.O. #

Drawing Number BH-36-114

Horizontal Storage Tank

Size: 36-114 *Submittal Data*



LAARS
Heating Systems Company
A subsidiary of BRADFORD WHITE Corporation

International Sales
1869 Sismet Road, Mississauga
Ontario, Canada L4W 1W8
905.238.0100 • Fax 905.366.0130

Headquarters
20 Industrial Way, Rochester, NH 03867
Customer Service, Service Advisors
800.900.9276 • Fax 800.559.1583

Technical Support
603.335.6300 • Fax 603.335.3355

www.Laars.com

Litho in U.S.A. © Laars Heating Systems 1405 Document 4223C-11

DESIGN NOTES

Code	ASME Sec IV HLW
Design Pressure	125 psi
Test Pressure	125 psi
Heads	3/16" 414G
Shell	3/16" 516 Grade 70
Interior	Ultonium Glass Lining
Exterior	Primed Painted
Radiograph	None
Capacity	515 gallons / 555 nominal
Tare Weight	920 lbs.
Support	2 Saddles

MATERIAL SPECIFICATIONS

Heads	Carbon Steel
Shell	Carbon Steel
Couplings	Carbon Steel
Flanges	
Pipe	
Manway	
Lining	Ultonium Glass

OPENINGS / HEIGHTS

MARK	SIZE	DESCRIPTION
A	126"	Overall Length
B	48"	Circulation
C	72"	Supports
D	36"	Diameter
E	31.69"	Support Width
F	45"	Height
	1"	Drain

WARRANTY**FIRST THROUGH FIVE YEAR – LIMITED WARRANTY:**

Laars warrants the lined steel tank for leakage caused by defects in materials and /or workmanship for five years from date of installation. If the tank is found to be defective in manufacture, Laars will provide replacement of tank.

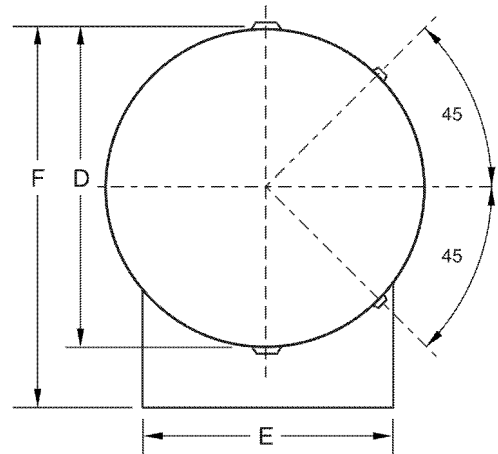
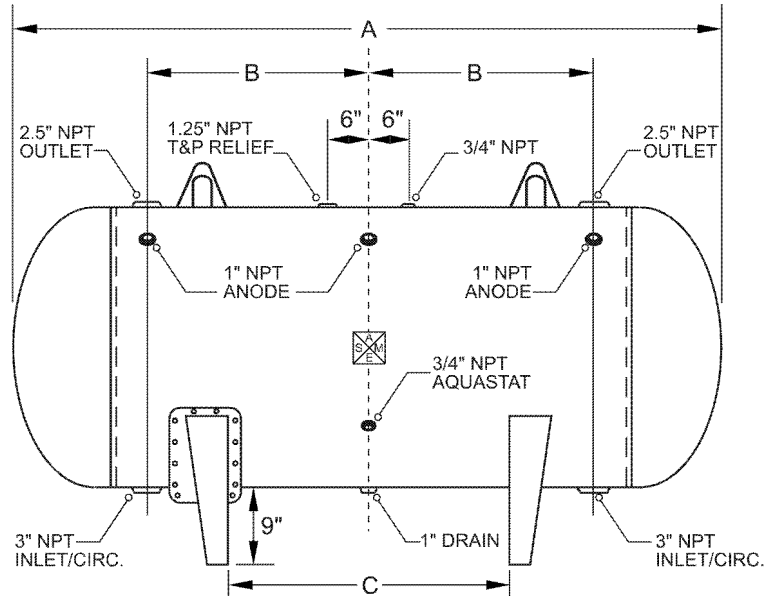
ONE YEAR – LIMITED WARRANTY: Laars warrants parts to be free from manufacturing defects in material and workmanship for one year from date of installation. If parts are found to be defective, Laars will provide replacement of parts.

PROJECT

Customer	
Scale	Not to Scale
Date	
Customer P.O. #	
Drawing Number	BH-36-126

Horizontal Storage Tank

Size: 36-126 *Submittal Data*



LAARS
Heating Systems Company
 A subsidiary of **BRADFORD WHITE** Corporation

International Sales
 1869 Sismet Road, Mississauga
 Ontario, Canada L4W 1W8
 905.238.0100 • Fax 905.366.0130

Headquarters
 20 Industrial Way, Rochester, NH 03867
Customer Service, Service Advisors
 800.900.9276 • Fax 800.559.1583

Technical Support
 603.335.6300 • Fax 603.335.3355

www.Laars.com

Litho in U.S.A. © Laars Heating Systems 1405 Document 4223C-12

DESIGN NOTES

Code	ASME Sec IV HLW
Design Pressure	125 psi
Test Pressure	125 psi
Heads	1/4" 414G
Shell	3/16" 516 Grade 70
Interior	Ultonium Glass Lining
Exterior	Primed Painted
Radiograph	None
Capacity	435 gallons / 486 nominal
Tare Weight	810 lbs.
Support	2 Saddles

MATERIAL SPECIFICATIONS

Heads	Carbon Steel
Shell	Carbon Steel
Couplings	Carbon Steel
Flanges	
Pipe	
Manway	Carbon Steel
Lining	Ultonium Glass

OPENINGS / HEIGHTS

MARK	SIZE	DESCRIPTION
A	81"	Overall Length
B	24"	Circulation
C	24"	Supports
D	42"	Diameter
E	36.75"	Support Width
F	51"	Height
	1"	Drain

WARRANTY**FIRST THROUGH FIVE YEAR – LIMITED WARRANTY:**

Laars warrants the lined steel tank for leakage caused by defects in materials and /or workmanship for five years from date of installation. If the tank is found to be defective in manufacture, Laars will provide replacement of tank.

ONE YEAR – LIMITED WARRANTY: Laars warrants parts to be free from manufacturing defects in material and workmanship for one year from date of installation. If parts are found to be defective, Laars will provide replacement of parts.

PROJECT

Customer

Scale Not to Scale

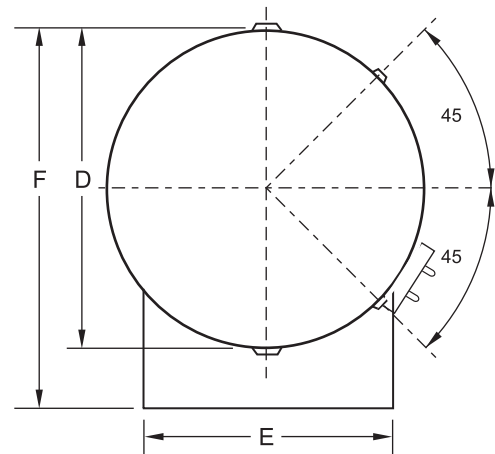
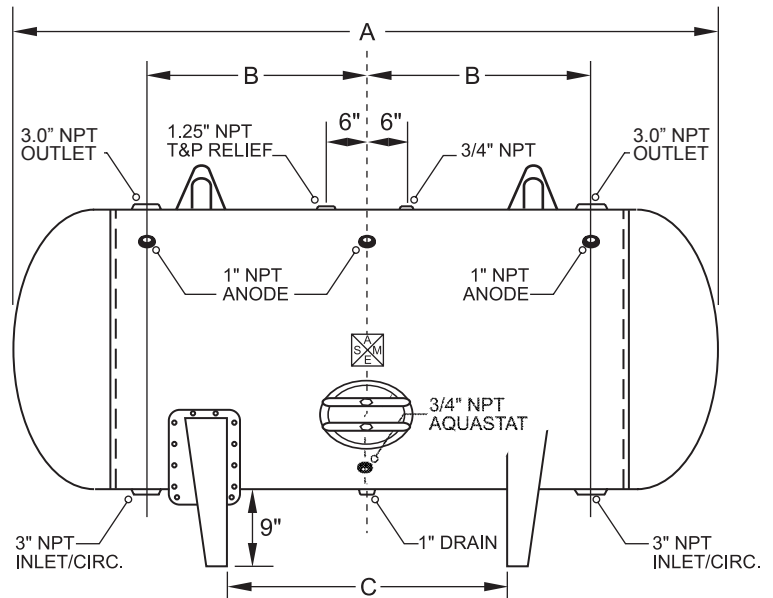
Date

Customer P.O. #

Drawing Number BH-42-081

Horizontal Storage Tank

Size: 42-081 *Submittal Data*



LAARS
Heating Systems Company
A subsidiary of BRADFORD WHITE Corporation

International Sales
1869 Sismet Road, Mississauga
Ontario, Canada L4W 1W8
905.238.0100 • Fax 905.366.0130

Headquarters
20 Industrial Way, Rochester, NH 03867
Customer Service, Service Advisors
800.900.9276 • Fax 800.559.1583

Technical Support
603.335.6300 • Fax 603.335.3355

www.Laars.com

Litho in U.S.A. © Laars Heating Systems 1405 Document 4223C-13

DESIGN NOTES

Code	ASME Sec IV HLW
Design Pressure	125 psi
Test Pressure	125 psi
Heads	1/4" 414G
Shell	3/16" 516 Grade 70
Interior	Ultonium Glass Lining
Exterior	Primed Painted
Radiograph	None
Capacity	455 gallons / 505 nominal
Tare Weight	832 lbs.
Support	2 Saddles

MATERIAL SPECIFICATIONS

Heads	Carbon Steel
Shell	Carbon Steel
Couplings	Carbon Steel
Flanges	
Pipe	
Manway	Carbon Steel
Lining	Ultonium Glass

OPENINGS / HEIGHTS

MARK	SIZE	DESCRIPTION
A	84"	Overall Length
B	25.5"	Circulation
C	27"	Supports
D	42"	Diameter
E	36.75"	Support Width
F	51"	Height
	1"	Drain

WARRANTY**FIRST THROUGH FIVE YEAR – LIMITED WARRANTY:**

Laars warrants the lined steel tank for leakage caused by defects in materials and /or workmanship for five years from date of installation. If the tank is found to be defective in manufacture, Laars will provide replacement of tank.

ONE YEAR – LIMITED WARRANTY: Laars warrants parts to be free from manufacturing defects in material and workmanship for one year from date of installation. If parts are found to be defective, Laars will provide replacement of parts.

PROJECT

Customer

Scale Not to Scale

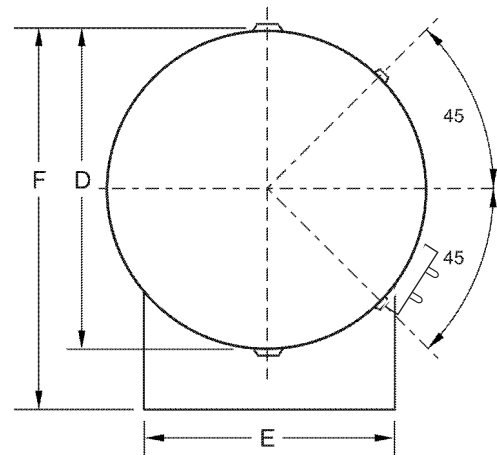
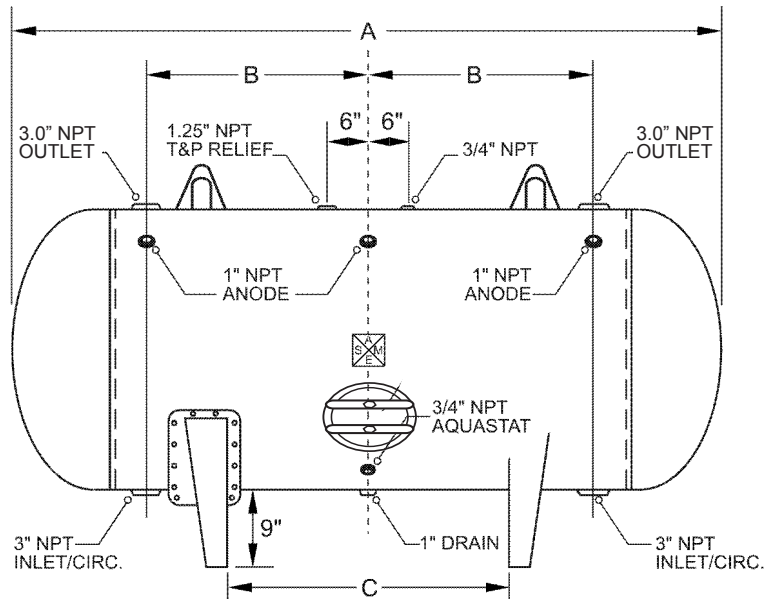
Date

Customer P.O. #

Drawing Number BH-42-084

Horizontal Storage Tank

Size: 42-084 *Submittal Data*



LAARS
Heating Systems Company
 A subsidiary of BRADFORD WHITE Corporation

International Sales
 1869 Sismet Road, Mississauga
 Ontario, Canada L4W 1W8
 905.238.0100 • Fax 905.366.0130

Headquarters
 20 Industrial Way, Rochester, NH 03867
Customer Service, Service Advisors
 800.900.9276 • Fax 800.559.1583

Technical Support
 603.335.6300 • Fax 603.335.3355

www.Laars.com

Litho in U.S.A. © Laars Heating Systems 1405 Document 4223C-14

DESIGN NOTES

Code	ASME Sec IV HLW
Design Pressure	125 psi
Test Pressure	125 psi
Heads	1/4" 414G
Shell	3/16" 516 Grade 70
Interior	Ultonium Glass Lining
Exterior	Primed Painted
Radiograph	None
Capacity	505 gallons / 558 nominal
Tare Weight	816 lbs.
Support	2 Saddles

MATERIAL SPECIFICATIONS

Heads	Carbon Steel
Shell	Carbon Steel
Couplings	Carbon Steel
Flanges	
Pipe	
Manway	Carbon Steel
Lining	Ultonium Glass

OPENINGS / HEIGHTS

MARK	SIZE	DESCRIPTION
A	93"	Overall Length
B	30"	Circulation
C	36"	Supports
D	42"	Diameter
E	36.75"	Support Width
F	51"	Height
	1"	Drain

WARRANTY**FIRST THROUGH FIVE YEAR – LIMITED WARRANTY:**

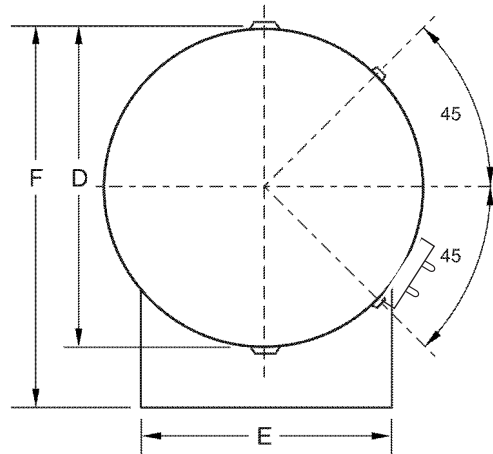
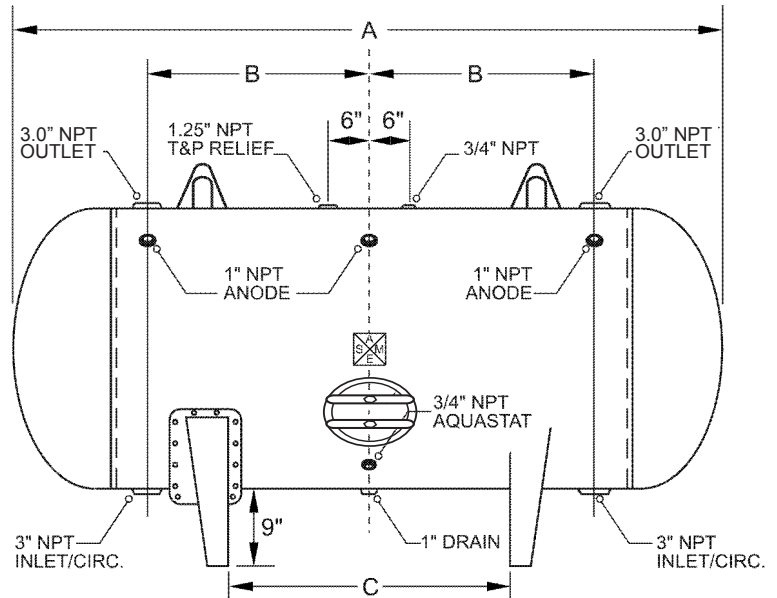
Laars warrants the lined steel tank for leakage caused by defects in materials and /or workmanship for five years from date of installation. If the tank is found to be defective in manufacture, Laars will provide replacement of tank.

ONE YEAR – LIMITED WARRANTY: Laars warrants parts to be free from manufacturing defects in material and workmanship for one year from date of installation. If parts are found to be defective, Laars will provide replacement of parts.

PROJECT

Customer	
Scale	Not to Scale
Date	
Customer P.O. #	
Drawing Number	BH-42-093

Horizontal Storage Tank

Size: 42-093**Submittal Data**

LAARS
Heating Systems Company
 A subsidiary of **BRADFORD WHITE** Corporation

International Sales
 1869 Sismet Road, Mississauga
 Ontario, Canada L4W 1W8
 905.238.0100 • Fax 905.366.0130

Headquarters
 20 Industrial Way, Rochester, NH 03867
Customer Service, Service Advisors
 800.900.9276 • Fax 800.559.1583

Technical Support
 603.335.6300 • Fax 603.335.3355

www.Laars.com

Litho in U.S.A. © Laars Heating Systems 1405 Document 4223C-15

DESIGN NOTES

Code	ASME Sec IV HLW
Design Pressure	125 psi
Test Pressure	125 psi
Heads	1/4" 414G
Shell	3/16" 516 Grade 70
Interior	Ultonium Glass Lining
Exterior	Primed Painted
Radiograph	None
Capacity	575 gallons / 630 nominal
Tare Weight	900 lbs.
Support	2 Saddles

MATERIAL SPECIFICATIONS

Heads	Carbon Steel
Shell	Carbon Steel
Couplings	Carbon Steel
Flanges	
Pipe	
Manway	Carbon Steel
Lining	Ultonium Glass

OPENINGS / HEIGHTS

MARK	SIZE	DESCRIPTION
A	105"	Overall Length
B	36"	Circulation
C	48"	Supports
D	42"	Diameter
E	36.75"	Support Width
F	51"	Height
	1"	Drain

WARRANTY**FIRST THROUGH FIVE YEAR – LIMITED WARRANTY:**

Laars warrants the lined steel tank for leakage caused by defects in materials and /or workmanship for five years from date of installation. If the tank is found to be defective in manufacture, Laars will provide replacement of tank.

ONE YEAR – LIMITED WARRANTY: Laars warrants parts to be free from manufacturing defects in material and workmanship for one year from date of installation. If parts are found to be defective, Laars will provide replacement of parts.

PROJECT

Customer

Scale Not to Scale

Date

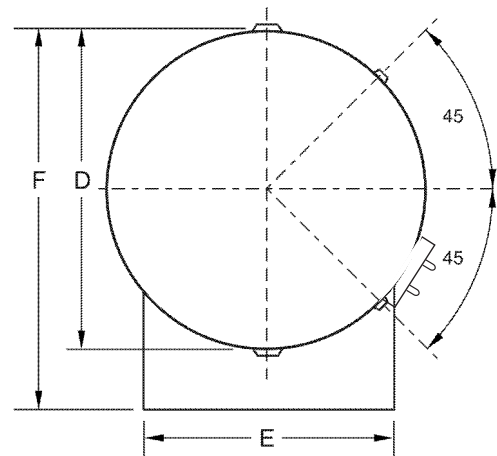
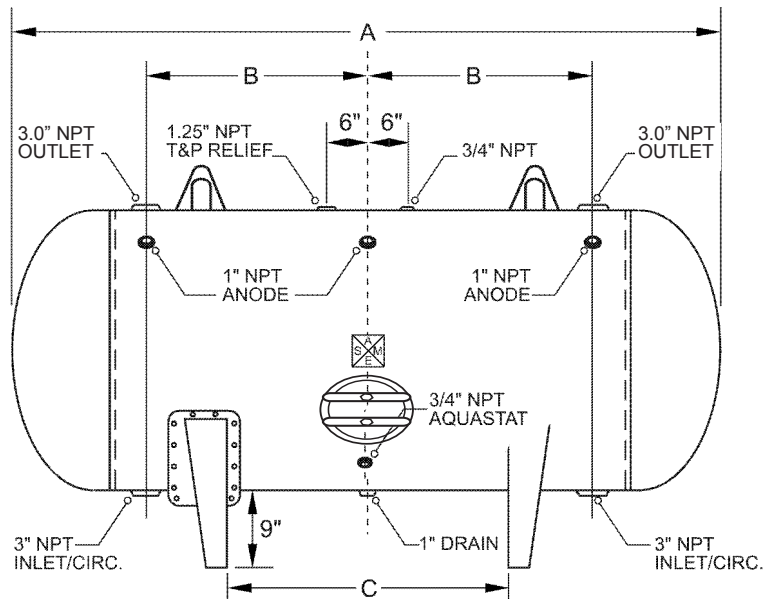
Customer P.O. #

Drawing Number BH-42-105

Horizontal Storage Tank

Size: 42-105

Submittal Data



LAARS
Heating Systems Company
A subsidiary of BRADFORD WHITE Corporation

International Sales
1869 Sismet Road, Mississauga
Ontario, Canada L4W 1W8
905.238.0100 • Fax 905.366.0130

Headquarters
20 Industrial Way, Rochester, NH 03867
Customer Service, Service Advisors
800.900.9276 • Fax 800.559.1583

Technical Support
603.335.6300 • Fax 603.335.3355

www.Laars.com

Litho in U.S.A. © Laars Heating Systems 1405 Document 4223C-16

DESIGN NOTES

Code	ASME Sec IV HLW
Design Pressure	125 psi
Test Pressure	125 psi
Heads	1/4" 414G
Shell	3/16" 516 Grade 70
Interior	Ultonium Glass Lining
Exterior	Primed Painted
Radiograph	None
Capacity	645 gallons / 702 nominal
Tare Weight	984 lbs.
Support	2 Saddles

MATERIAL SPECIFICATIONS

Heads	Carbon Steel
Shell	Carbon Steel
Couplings	Carbon Steel
Flanges	
Pipe	
Manway	Carbon Steel
Lining	Ultonium Glass

OPENINGS / HEIGHTS

MARK	SIZE	DESCRIPTION
A	117"	Overall Length
B	42"	Circulation
C	60"	Supports
D	42"	Diameter
E	36.75"	Support Width
F	51"	Height
	1"	Drain

WARRANTY**FIRST THROUGH FIVE YEAR – LIMITED WARRANTY:**

Laars warrants the lined steel tank for leakage caused by defects in materials and /or workmanship for five years from date of installation. If the tank is found to be defective in manufacture, Laars will provide replacement of tank.

ONE YEAR – LIMITED WARRANTY: Laars warrants parts to be free from manufacturing defects in material and workmanship for one year from date of installation. If parts are found to be defective, Laars will provide replacement of parts.

PROJECT

Customer

Scale Not to Scale

Date

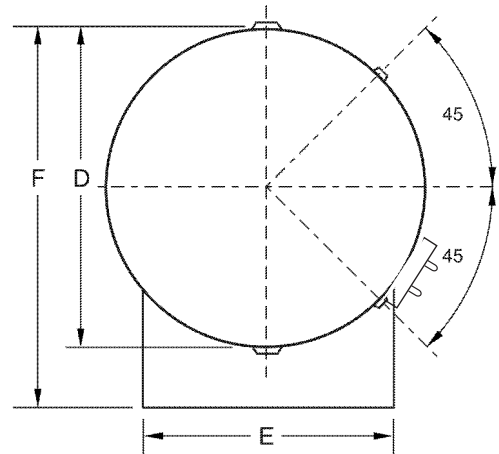
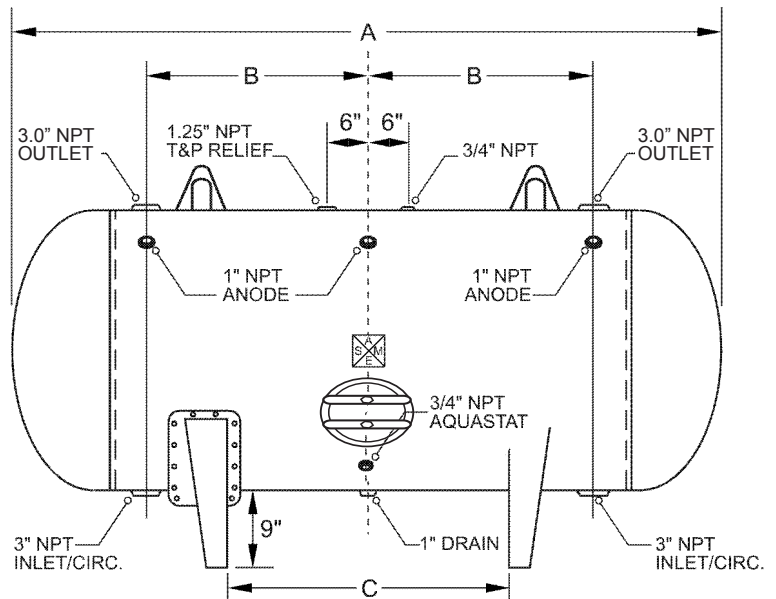
Customer P.O. #

Drawing Number BH-42-117

Horizontal Storage Tank

Size: 42-117

Submittal Data



LAARS
Heating Systems Company
A subsidiary of BRADFORD WHITE Corporation

International Sales
1869 Sismet Road, Mississauga
Ontario, Canada L4W 1W8
905.238.0100 • Fax 905.366.0130

Headquarters
20 Industrial Way, Rochester, NH 03867
Customer Service, Service Advisors
800.900.9276 • Fax 800.559.1583

Technical Support
603.335.6300 • Fax 603.335.3355
www.Laars.com

Litho in U.S.A. © Laars Heating Systems 1405 Document 4223C-17

DESIGN NOTES

Code	ASME Sec IV HLW
Design Pressure	125 psi
Test Pressure	125 psi
Heads	1/4" 414G
Shell	3/16" 516 Grade 70
Interior	Ultonium Glass Lining
Exterior	Primed Painted
Radiograph	None
Capacity	720 gallons / 774 nominal
Tare Weight	1068 lbs.
Support	2 Saddles

MATERIAL SPECIFICATIONS

Heads	Carbon Steel
Shell	Carbon Steel
Couplings	Carbon Steel
Flanges	
Pipe	
Manway	Carbon Steel
Lining	Ultonium Glass

OPENINGS / HEIGHTS

MARK	SIZE	DESCRIPTION
A	129"	Overall Length
B	48"	Circulation
C	72"	Supports
D	42"	Diameter
E	36.75"	Support Width
F	51"	Height
	1"	Drain

WARRANTY**FIRST THROUGH FIVE YEAR – LIMITED WARRANTY:**

Laars warrants the lined steel tank for leakage caused by defects in materials and /or workmanship for five years from date of installation. If the tank is found to be defective in manufacture, Laars will provide replacement of tank.

ONE YEAR – LIMITED WARRANTY: Laars warrants parts to be free from manufacturing defects in material and workmanship for one year from date of installation. If parts are found to be defective, Laars will provide replacement of parts.

PROJECT

Customer

Scale Not to Scale

Date

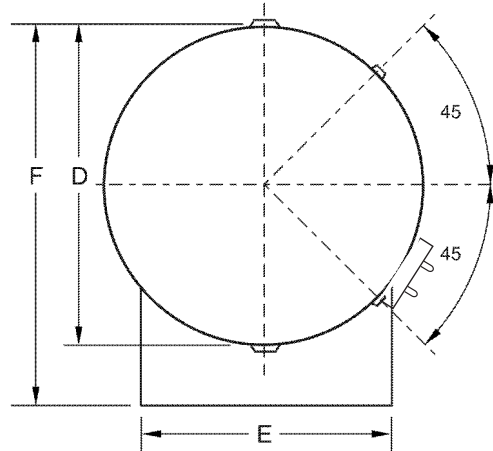
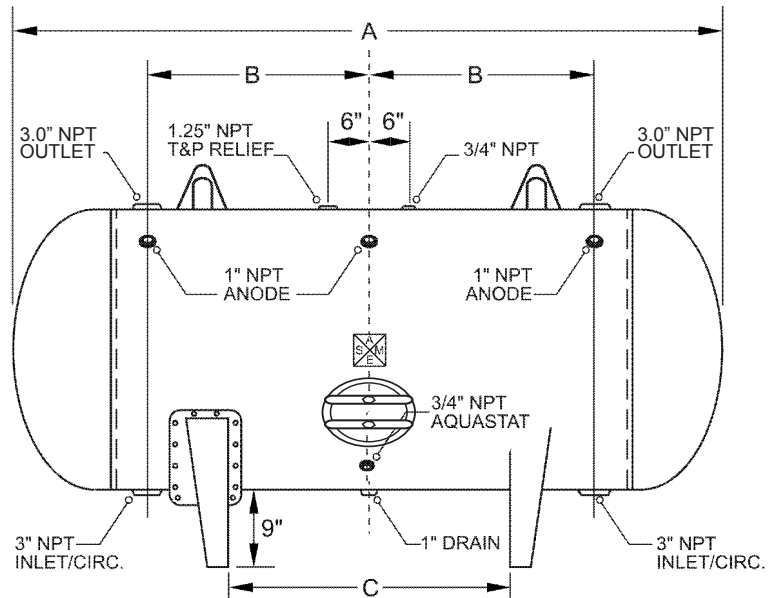
Customer P.O. #

Drawing Number BH-42-129

Horizontal Storage Tank

Size: 42-129

Submittal Data



LAARS
Heating Systems Company
A subsidiary of BRADFORD WHITE Corporation

International Sales
1869 Sismet Road, Mississauga
Ontario, Canada L4W 1W8
905.238.0100 • Fax 905.366.0130

Headquarters
20 Industrial Way, Rochester, NH 03867
Customer Service, Service Advisors
800.900.9276 • Fax 800.559.1583

Technical Support
603.335.6300 • Fax 603.335.3355
www.Laars.com

Litho in U.S.A. © Laars Heating Systems 1405 Document 4223C-18

DESIGN NOTES

Code	ASME IV, Part HLW
Design Pressure	125 psi
Test Pressure	125 psi
Heads	1/4" 414G
Shell	1/4" 516 Grade 70
Interior	NSF Approved
Exterior	Red Oxide Primer
Radiograph	None
Capacity	790 gallons / 846 nominal
Tare Weight	1192 lbs.
Support	2 Saddles

MATERIAL SPECIFICATIONS

Heads	Carbon Steel
Shell & Manway	Carbon Steel
Couplings	Carbon Steel
Flanges	
Pipe	
Anodes	Magnesium Anode Rod
Lining	Glass-Lined

OPENINGS / HEIGHTS

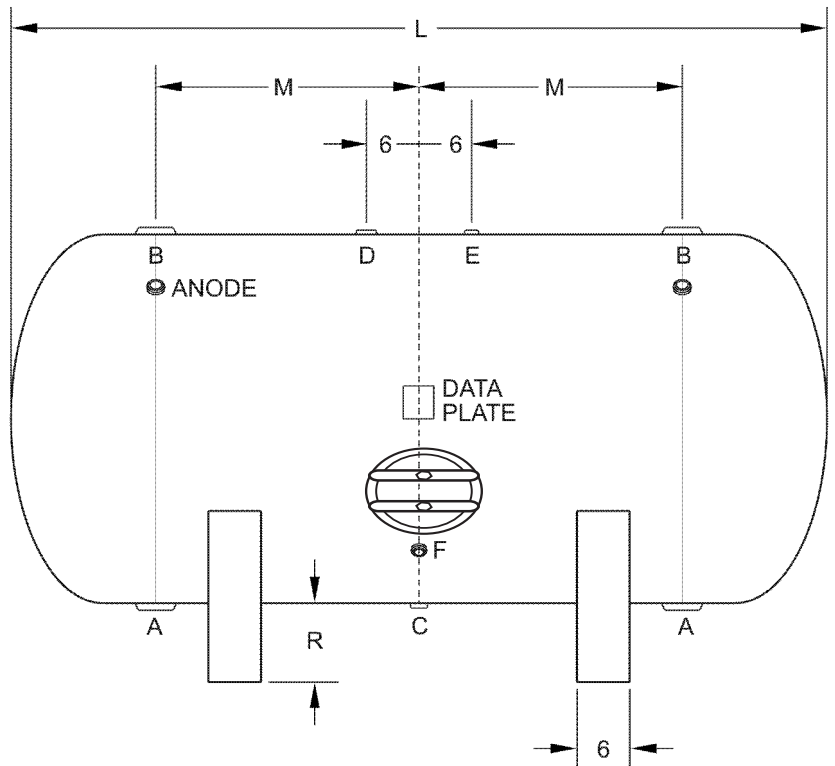
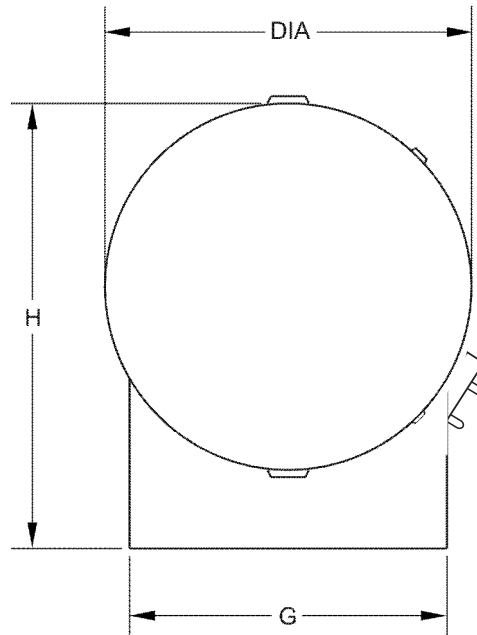
MARK	SIZE	DIMENSION	DESCRIPTION
A	3"		NPT Tapping
B	3"		NPT Tapping
C	1"		NPT Drain
D	1 1/4"		NPT Relief
E	3/4"		NPT Auxilliary
F	3/4"		NPT Aquastat
G		36-3/8"	Saddle Width
H		51"	Height
L		139"	Length
DIA		42"	Diameter
M		24"	NPT to Center
R		9"	Saddle to Tank

NOTES**PROJECT**

Customer	
Scale	Not to Scale
Date	
Customer P.O. #	
Drawing Number	BH-42-139

Horizontal Storage Tank

Size: 42-139 *Submittal Data*



LAARS®
Heating Systems Company
 A subsidiary of BRADFORD WHITE Corporation

International Sales
 1869 Sismet Road, Mississauga
 Ontario, Canada L4W 1W8
 905.238.0100 • Fax 905.366.0130

Headquarters
 20 Industrial Way, Rochester, NH 03867
Customer Service, Service Advisors
 800.900.9276 • Fax 800.559.1583

Technical Support
 603.335.6300 • Fax 603.335.3355

www.Laars.com

Litho in U.S.A. © Laars Heating Systems 1111 Document 4223A-19

DESIGN NOTES

Code ASME IV, Part HLW

Design Pressure 125 psi

Test Pressure 125 psi

Heads 1/4" 414G

Shell 1/4" 516 Grade 70

Interior NSF Approved

Exterior Red Oxide Primer

Radiograph None

Capacity 500 gallons / 572 nominal

Tare Weight 1025 lbs.

Support 2 Saddles

MATERIAL SPECIFICATIONS

Heads Carbon Steel

Shell & Manway Carbon Steel

Couplings Carbon Steel

Flanges

Pipe

Anodes Magnesium Anode Rod

Lining Glass-Lined

OPENINGS / HEIGHTS

MARK	SIZE	DIMENSION	DESCRIPTION
A	3"		NPT Tapping
B	3"		NPT Tapping
C	1"		NPT Drain
D	1 1/4"		NPT Relief
E	3/4"		NPT Auxilliary
F	3/4"		NPT Aquastat
G		42-1/8"	Saddle Width
H		57"	Height
L		73"	Length
DIA		48"	Diameter
M		24"	NPT to Center
R		9"	Saddle to Tank

NOTES**PROJECT**

Customer

Scale Not to Scale

Date

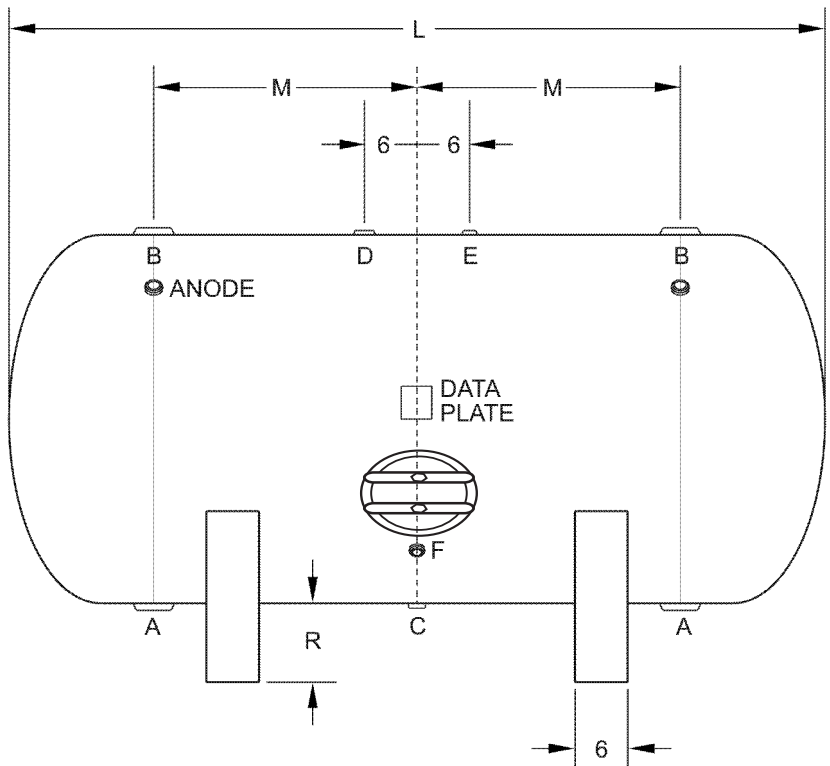
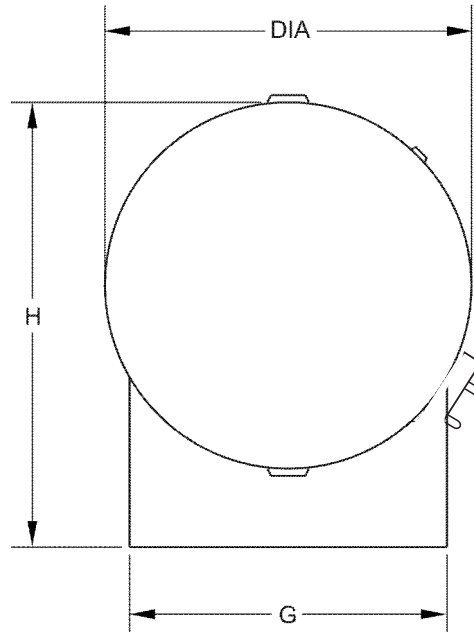
Customer P.O. #

Drawing Number BH-48-073

Horizontal Storage Tank

Size: 48-073

Submittal Data



LAARS
Heating Systems Company
 A subsidiary of **BRADFORD WHITE** Corporation

International Sales
 1869 Sismet Road, Mississauga
 Ontario, Canada L4W 1W8
 905.238.0100 • Fax 905.366.0130

Headquarters
 20 Industrial Way, Rochester, NH 03867
Customer Service, Service Advisors
 800.900.9276 • Fax 800.559.1583

Technical Support
 603.335.6300 • Fax 603.335.3355

www.Laars.com

Litho in U.S.A. © Laars Heating Systems 1111 Document 4223A-20

DESIGN NOTES

Code	ASME Sec IV HLW
Design Pressure	125 psi
Test Pressure	125 psi
Heads	1/4" 414G
Shell	1/4" 516 Grade 70
Interior	Ultonium Glass Lining
Exterior	Primed Painted
Radiograph	None
Capacity	580 gallons / 658 nominal
Tare Weight	1213 lbs.
Support	2 Saddles

MATERIAL SPECIFICATIONS

Heads	Carbon Steel
Shell	Carbon Steel
Couplings	Carbon Steel
Flanges	
Pipe	
Manway	Carbon Steel
Lining	Ultonium Glass

OPENINGS / HEIGHTS

MARK	SIZE	DESCRIPTION
A	84"	Overall Length
B	24"	Circulation
C	24"	Supports
D	48"	Diameter
E	42.13"	Support Width
F	57"	Height
	1"	Drain

WARRANTY**FIRST THROUGH FIVE YEAR – LIMITED WARRANTY:**

Laars warrants the lined steel tank for leakage caused by defects in materials and /or workmanship for five years from date of installation. If the tank is found to be defective in manufacture, Laars will provide replacement of tank.

ONE YEAR – LIMITED WARRANTY: Laars warrants parts to be free from manufacturing defects in material and workmanship for one year from date of installation. If parts are found to be defective, Laars will provide replacement of parts.

PROJECT

Customer

Scale Not to Scale

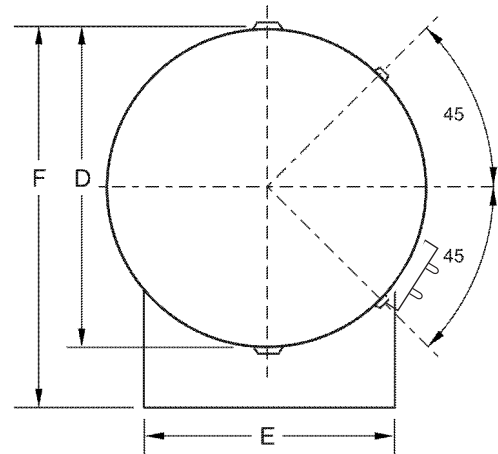
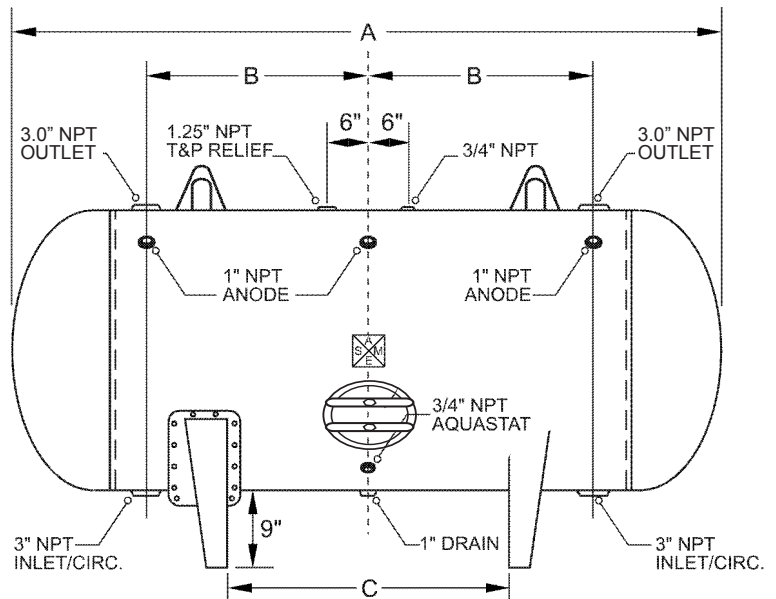
Date

Customer P.O. #

Drawing Number BH-48-084

Horizontal Storage Tank

Size: 48-084 *Submittal Data*



LAARS
Heating Systems Company
A subsidiary of BRADFORD WHITE Corporation

International Sales
1869 Sismet Road, Mississauga
Ontario, Canada L4W 1W8
905.238.0100 • Fax 905.366.0130

Headquarters
20 Industrial Way, Rochester, NH 03867
Customer Service, Service Advisors
800.900.9276 • Fax 800.559.1583

Technical Support
603.335.6300 • Fax 603.335.3355

www.Laars.com

Litho in U.S.A. © Laars Heating Systems 1405 Document 4223C-21

DESIGN NOTES

Code	ASME Sec IV HLW
Design Pressure	125 psi
Test Pressure	125 psi
Heads	1/4" 414G
Shell	1/4" 516 Grade 70
Interior	Ultonium Glass Lining
Exterior	Primed Painted
Radiograph	None
Capacity	675 gallons / 752 nominal
Tare Weight	1350 lbs.
Support	2 Saddles

MATERIAL SPECIFICATIONS

Heads	Carbon Steel
Shell	Carbon Steel
Couplings	Carbon Steel
Flanges	
Pipe	
Manway	Carbon Steel
Lining	Ultonium Glass

OPENINGS / HEIGHTS

MARK	SIZE	DESCRIPTION
A	96"	Overall Length
B	30"	Circulation
C	36"	Supports
D	48"	Diameter
E	42.13"	Support Width
F	57"	Height
	1"	Drain

WARRANTY**FIRST THROUGH FIVE YEAR – LIMITED WARRANTY:**

Laars warrants the lined steel tank for leakage caused by defects in materials and /or workmanship for five years from date of installation. If the tank is found to be defective in manufacture, Laars will provide replacement of tank.

ONE YEAR – LIMITED WARRANTY: Laars warrants parts to be free from manufacturing defects in material and workmanship for one year from date of installation. If parts are found to be defective, Laars will provide replacement of parts.

PROJECT

Customer

Scale Not to Scale

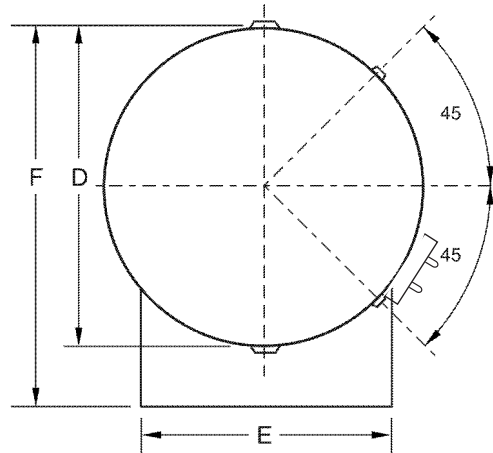
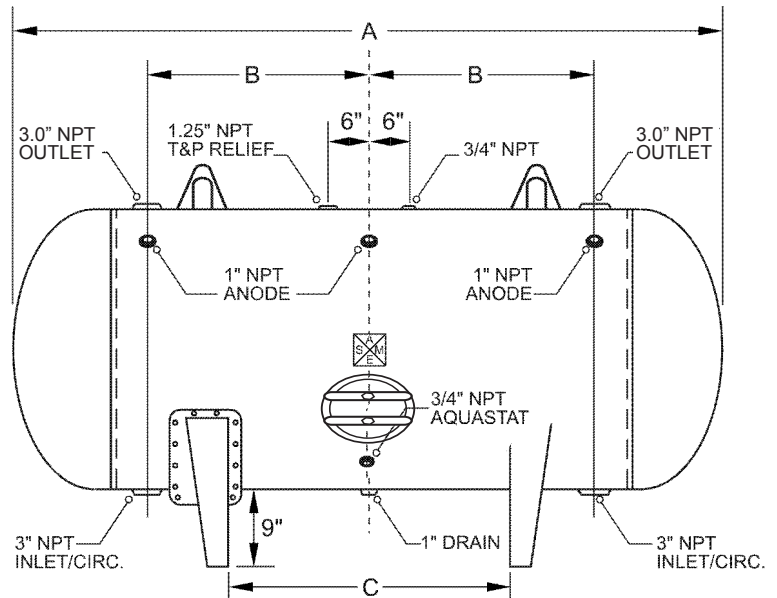
Date

Customer P.O. #

Drawing Number BH-48-096

Horizontal Storage Tank

Size: 48-096 *Submittal Data*



LAARS
Heating Systems Company
A subsidiary of BRADFORD WHITE Corporation

International Sales
1869 Sismet Road, Mississauga
Ontario, Canada L4W 1W8
905.238.0100 • Fax 905.366.0130

Headquarters
20 Industrial Way, Rochester, NH 03867
Customer Service, Service Advisors
800.900.9276 • Fax 800.559.1583

Technical Support
603.335.6300 • Fax 603.335.3355
www.Laars.com

Litho in U.S.A. © Laars Heating Systems 1405 Document 4223C-22

DESIGN NOTES

Code	ASME Sec IV HLW
Design Pressure	125 psi
Test Pressure	125 psi
Heads	1/4" 414G
Shell	1/4" 516 Grade 70
Interior	Ultonium Glass Lining
Exterior	Primed Painted
Radiograph	None
Capacity	765 gallons / 846 nominal
Tare Weight	1485 lbs.
Support	2 Saddles

MATERIAL SPECIFICATIONS

Heads	Carbon Steel
Shell	Carbon Steel
Couplings	Carbon Steel
Flanges	
Pipe	
Manway	Carbon Steel
Lining	Ultonium Glass

OPENINGS / HEIGHTS

MARK	SIZE	DESCRIPTION
A	108"	Overall Length
B	36"	Circulation
C	48"	Supports
D	48"	Diameter
E	42.13"	Support Width
F	57"	Height
	1"	Drain

WARRANTY**FIRST THROUGH FIVE YEAR – LIMITED WARRANTY:**

Laars warrants the lined steel tank for leakage caused by defects in materials and /or workmanship for five years from date of installation. If the tank is found to be defective in manufacture, Laars will provide replacement of tank.

ONE YEAR – LIMITED WARRANTY: Laars warrants parts to be free from manufacturing defects in material and workmanship for one year from date of installation. If parts are found to be defective, Laars will provide replacement of parts.

PROJECT

Customer

Scale Not to Scale

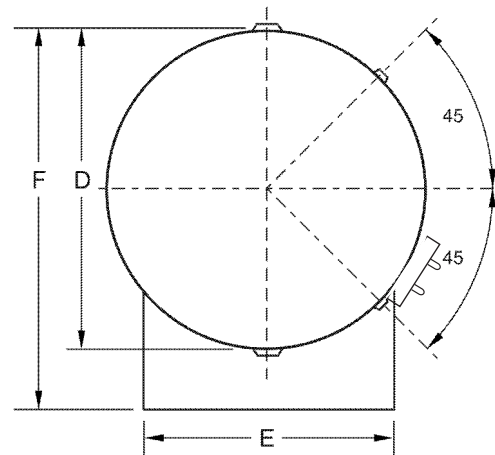
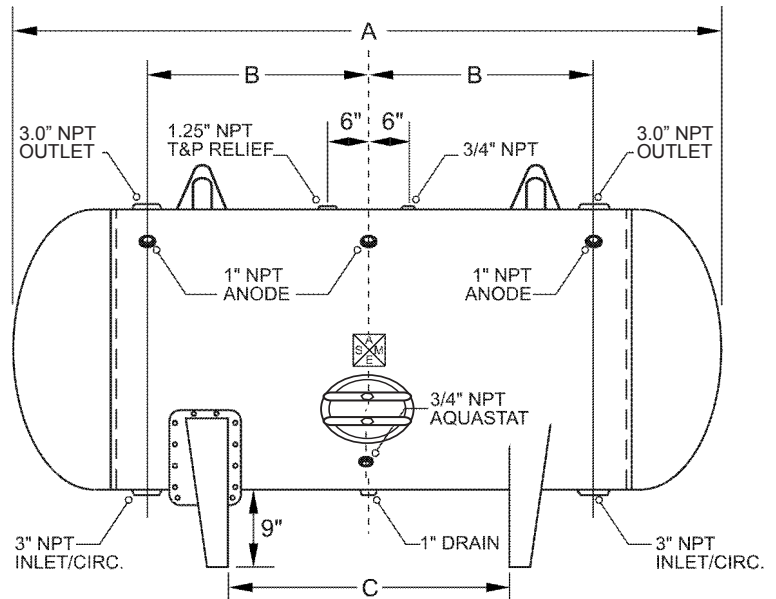
Date

Customer P.O. #

Drawing Number BH-48-108

Horizontal Storage Tank

Size: 48-108 *Submittal Data*



LAARS
Heating Systems Company
A subsidiary of BRADFORD WHITE Corporation

International Sales
1869 Sismet Road, Mississauga
Ontario, Canada L4W 1W8
905.238.0100 • Fax 905.366.0130

Headquarters
20 Industrial Way, Rochester, NH 03867
Customer Service, Service Advisors
800.900.9276 • Fax 800.559.1583

Technical Support
603.335.6300 • Fax 603.335.3355

www.Laars.com

Litho in U.S.A. © Laars Heating Systems 1405 Document 4223C-23

DESIGN NOTES

Code	ASME Sec IV HLW
Design Pressure	125 psi
Test Pressure	125 psi
Heads	1/4" 414G
Shell	1/4" 516 Grade 70
Interior	Ultonium Glass Lining
Exterior	Primed Painted
Radiograph	None
Capacity	860 gallons / 940 nominal
Tare Weight	1619 lbs.
Support	2 Saddles

MATERIAL SPECIFICATIONS

Heads	Carbon Steel
Shell	Carbon Steel
Couplings	Carbon Steel
Flanges	
Pipe	
Manway	Carbon Steel
Lining	Ultonium Glass

OPENINGS / HEIGHTS

MARK	SIZE	DESCRIPTION
A	120"	Overall Length
B	42"	Circulation
C	60"	Supports
D	48"	Diameter
E	42.13"	Support Width
F	57"	Height
	1"	Drain

WARRANTY**FIRST THROUGH FIVE YEAR – LIMITED WARRANTY:**

Laars warrants the lined steel tank for leakage caused by defects in materials and /or workmanship for five years from date of installation. If the tank is found to be defective in manufacture, Laars will provide replacement of tank.

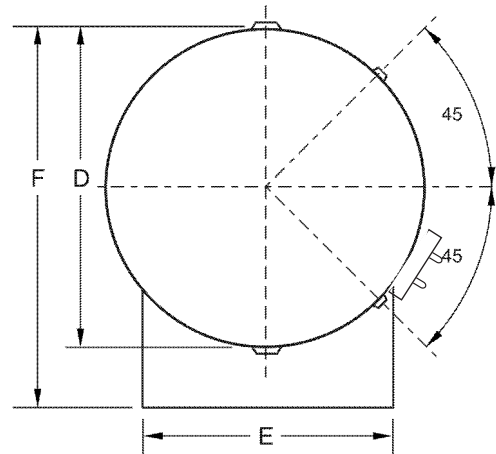
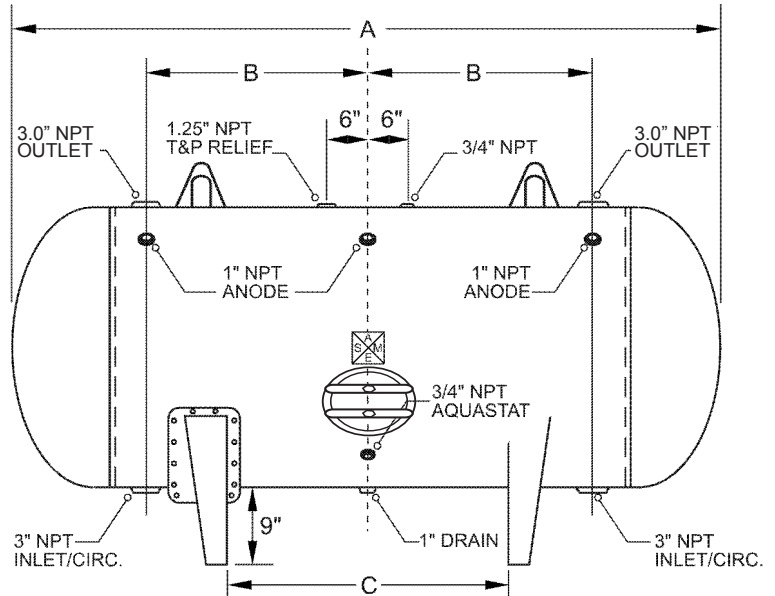
ONE YEAR – LIMITED WARRANTY: Laars warrants parts to be free from manufacturing defects in material and workmanship for one year from date of installation. If parts are found to be defective, Laars will provide replacement of parts.

PROJECT

Customer	
Scale	Not to Scale
Date	
Customer P.O. #	
Drawing Number	BH-48-120

Horizontal Storage Tank

Size: 48-120 *Submittal Data*



LAARS
Heating Systems Company
 A subsidiary of BRADFORD WHITE Corporation

International Sales
 1869 Sismet Road, Mississauga
 Ontario, Canada L4W 1W8
 905.238.0100 • Fax 905.366.0130

Headquarters
 20 Industrial Way, Rochester, NH 03867
Customer Service, Service Advisors
 800.900.9276 • Fax 800.559.1583

Technical Support
 603.335.6300 • Fax 603.335.3355

www.Laars.com

Litho in U.S.A. © Laars Heating Systems 1405 Document 4223C-24

DESIGN NOTES

Code	ASME Sec IV HLW
Design Pressure	125 psi
Test Pressure	125 psi
Heads	1/4" 414G
Shell	1/4" 516 Grade 70
Interior	Ultonium Glass Lining
Exterior	Primed Painted
Radiograph	None
Capacity	1040 gallons / 1128 nominal
Tare Weight	1857 lbs.
Support	2 Saddles

MATERIAL SPECIFICATIONS

Heads	Carbon Steel
Shell	Carbon Steel
Couplings	Carbon Steel
Flanges	
Pipe	
Manway	Carbon Steel
Lining	Ultonium Glass

OPENINGS / HEIGHTS

MARK	SIZE	DESCRIPTION
A	141"	Overall Length
B	52.5"	Circulation
C	81"	Supports
D	48"	Diameter
E	42.13"	Support Width
F	57"	Height
	1"	Drain

WARRANTY**FIRST THROUGH FIVE YEAR – LIMITED WARRANTY:**

Laars warrants the lined steel tank for leakage caused by defects in materials and /or workmanship for five years from date of installation. If the tank is found to be defective in manufacture, Laars will provide replacement of tank.

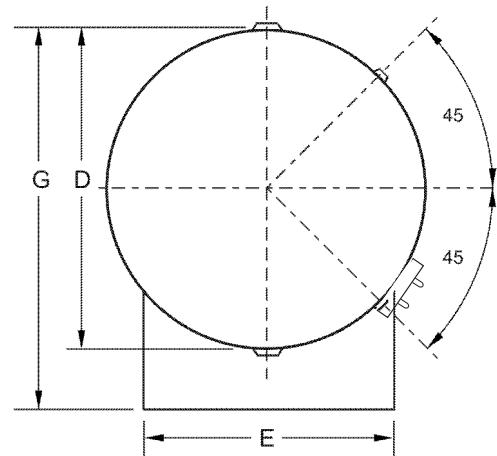
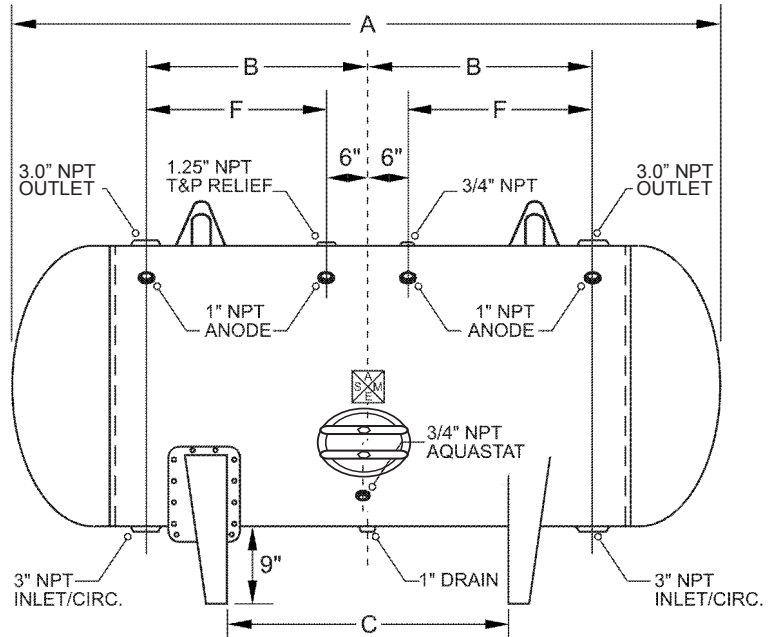
ONE YEAR – LIMITED WARRANTY: Laars warrants parts to be free from manufacturing defects in material and workmanship for one year from date of installation. If parts are found to be defective, Laars will provide replacement of parts.

PROJECT

Customer	
Scale	Not to Scale
Date	
Customer P.O. #	
Drawing Number	BH-48-141

Horizontal Storage Tank

Size: 48-141 *Submittal Data*



LAARS
Heating Systems Company
 A subsidiary of **BRADFORD WHITE** Corporation

International Sales
 1869 Sismet Road, Mississauga
 Ontario, Canada L4W 1W8
 905.238.0100 • Fax 905.366.0130

Headquarters
 20 Industrial Way, Rochester, NH 03867
Customer Service, Service Advisors
 800.900.9276 • Fax 800.559.1583

Technical Support
 603.335.6300 • Fax 603.335.3355

www.Laars.com

Litho in U.S.A. © Laars Heating Systems 1405 Document 4223C-25

DESIGN NOTES

Code	ASME IV, Part HLW
Design Pressure	125 psi
Test Pressure	125 psi

Heads	1/4" 414G
Shell	1/4" 516 Grade 70
Interior	NSF Approved
Exterior	Red Oxide Primer
Radiograph	None
Capacity	1225 gallons / 1306 nominal
Tare Weight	2056 lbs.
Support	2 Saddles

MATERIAL SPECIFICATIONS

Heads	Carbon Steel
Shell & Manway	Carbon Steel
Couplings	Carbon Steel
Anodes	Magnesium Anode Rod
Lining	Glass-Lined

OPENINGS / HEIGHTS

MARK	SIZE	DIMENSION	DESCRIPTION
A	3"		NPT Tapping
B	3"		NPT Tapping
C	1"		NPT Drain
D	1 1/4"		NPT Relief
E	3/4"		NPT Auxilliary
F	3/4"		NPT Aquastat
G		42-1/8"	Saddle Width
H		57"	Height
L		168"	Length
DIA		48"	Diameter
M		24"	NPT to Center
R		9"	Saddle to Tank

WARRANTY**FIRST THROUGH FIVE YEAR – LIMITED WARRANTY:**

Laars warrants the lined steel tank for leakage caused by defects in materials and /or workmanship for five years from date of installation. If the tank is found to be defective in manufacture, Laars will provide replacement of tank.

ONE YEAR – LIMITED WARRANTY:

Laars warrants parts to be free from manufacturing defects in material and workmanship for one year from date of installation. If parts are found to be defective, Laars will provide replacement of parts.

PROJECT

Customer

Scale Not to Scale

Date

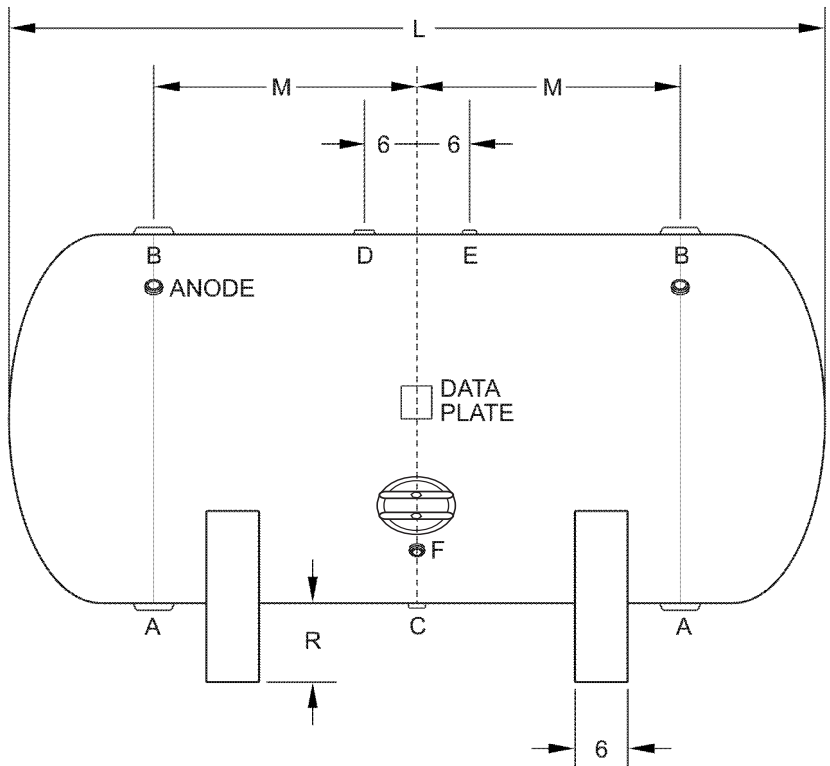
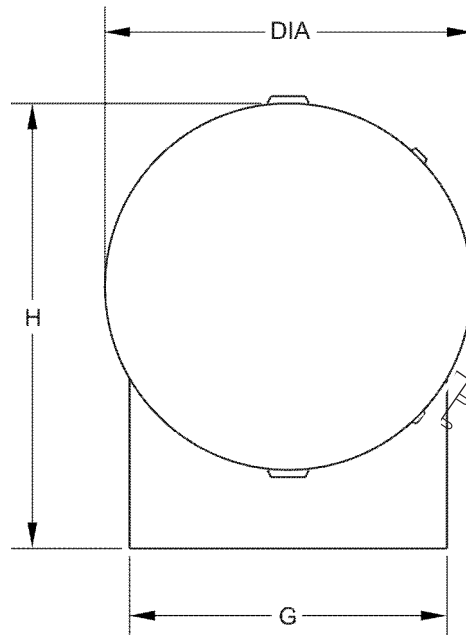
Customer P.O. #

Drawing Number BH-48-168

Horizontal Storage Tank

Size: 48-168

Submittal Data



LAARS
Heating Systems Company
 A subsidiary of **BRADFORD WHITE** Corporation

International Sales
 1869 Sismet Road, Mississauga
 Ontario, Canada L4W 1W8
 905.238.0100 • Fax 905.366.0130

Headquarters
 20 Industrial Way, Rochester, NH 03867
Customer Service, Service Advisors
 800.900.9276 • Fax 800.559.1583

Technical Support
 603.335.6300 • Fax 603.335.3355

www.Laars.com

Litho in U.S.A. © Laars Heating Systems 1111 Document 4223A-26

DESIGN NOTES

Code	ASME IV, Part HLW
Design Pressure	125 psi
Test Pressure	125 psi
Heads	1/4" 414G
Shell	1/4" 516 Grade 70
Interior	NSF Approved
Exterior	Red Oxide Primer
Radiograph	None
Capacity	875 gallons / 981 nominal
Tare Weight	1596 lbs.
Support	2 Saddles

MATERIAL SPECIFICATIONS

Heads	Carbon Steel
Shell & Manway	Carbon Steel
Couplings	Carbon Steel
Anodes	Magnesium Anode Rod
Lining	Glass-Lined

OPENINGS / HEIGHTS

MARK	SIZE	DIMENSION	DESCRIPTION
A	3"		NPT Tapping
B	3"		NPT Tapping
C	1"		NPT Drain
D	1 1/4"		NPT Relief
E	3/4"		NPT Auxilliary
F	3/4"		NPT Aquastat
G		47-7/8"	Saddle Width
H		63"	Height
L		99"	Length
DIA		54"	Diameter
M		24"	NPT to Center
R		9"	Saddle to Tank

WARRANTY**FIRST THROUGH FIVE YEAR – LIMITED WARRANTY:**

Laars warrants the lined steel tank for leakage caused by defects in materials and /or workmanship for five years from date of installation. If the tank is found to be defective in manufacture, Laars will provide replacement of tank.

ONE YEAR – LIMITED WARRANTY:

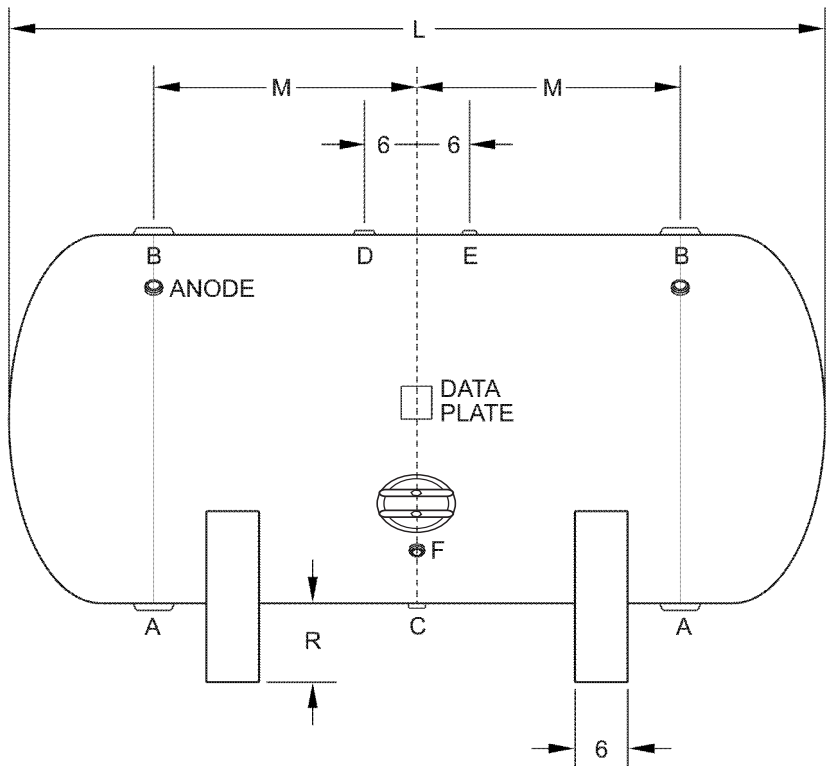
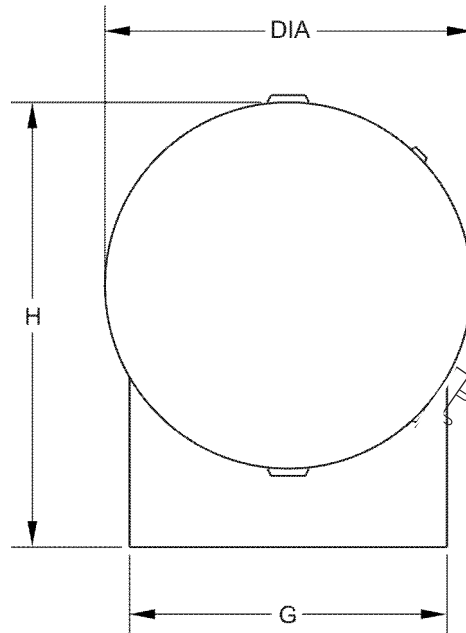
Laars warrants parts to be free from manufacturing defects in material and workmanship for one year from date of installation. If parts are found to be defective, Laars will provide replacement of parts.

PROJECT

Customer	
Scale	Not to Scale
Date	
Customer P.O. #	
Drawing Number	BH-54-099

Horizontal Storage Tank

Size: 54-099 *Submittal Data*



LAARS
Heating Systems Company
 A subsidiary of **BRADFORD WHITE** Corporation

International Sales
 1869 Sismet Road, Mississauga
 Ontario, Canada L4W 1W8
 905.238.0100 • Fax 905.366.0130

Headquarters
 20 Industrial Way, Rochester, NH 03867
Customer Service, Service Advisors
 800.900.9276 • Fax 800.559.1583

Technical Support
 603.335.6300 • Fax 603.335.3355

www.Laars.com

Litho in U.S.A. © Laars Heating Systems 1111 Document 4223A-27

DESIGN NOTES

Code	ASME IV, Part HLW
Design Pressure	125 psi
Test Pressure	125 psi
Heads	1/4" 414G
Shell	1/4" 516 Grade 70
Interior	NSF Approved
Exterior	Red Oxide Primer
Radiograph	None
Capacity	1110 gallons / 1219 nominal
Tare Weight	1889 lbs.
Support	2 Saddles

MATERIAL SPECIFICATIONS

Heads	Carbon Steel
Shell & Manway	Carbon Steel
Couplings	Carbon Steel
Anodes	Magnesium Anode Rod
Lining	Glass-Lined

OPENINGS / HEIGHTS

MARK	SIZE	DIMENSION	DESCRIPTION
A	3"		NPT Tapping
B	3"		NPT Tapping
C	1"		NPT Drain
D	1 1/4"		NPT Relief
E	3/4"		NPT Auxilliary
F	3/4"		NPT Aquastat
G		47-7/8"	Saddle Width
H		63"	Height
L		123"	Length
DIA		54"	Diameter
M		24"	NPT to Center
R		9"	Saddle to Tank

WARRANTY**FIRST THROUGH FIVE YEAR – LIMITED WARRANTY:**

Laars warrants the lined steel tank for leakage caused by defects in materials and /or workmanship for five years from date of installation. If the tank is found to be defective in manufacture, Laars will provide replacement of tank.

ONE YEAR – LIMITED WARRANTY:

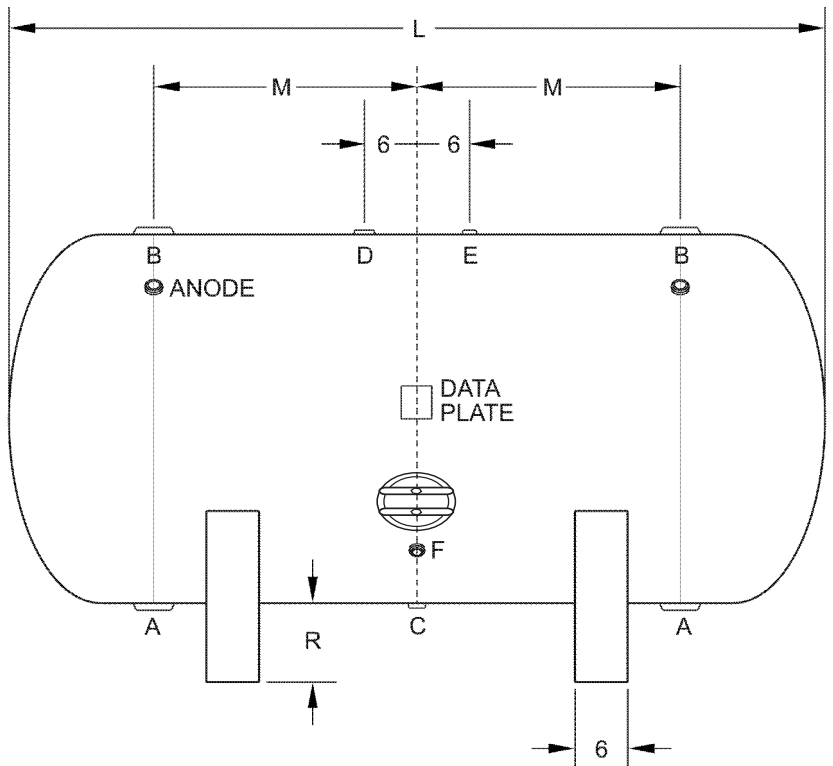
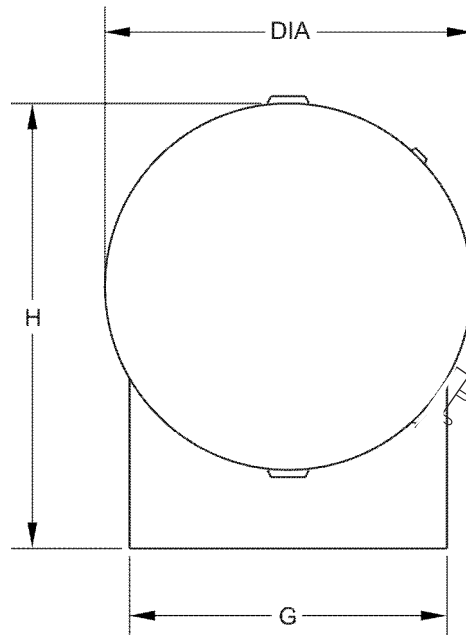
Laars warrants parts to be free from manufacturing defects in material and workmanship for one year from date of installation. If parts are found to be defective, Laars will provide replacement of parts.

PROJECT

Customer	
Scale	Not to Scale
Date	
Customer P.O. #	
Drawing Number	BH-54-123

Horizontal Storage Tank

Size: 54-123 *Submittal Data*



LAARS
Heating Systems Company
 A subsidiary of BRADFORD WHITE Corporation

International Sales
 1869 Sismet Road, Mississauga
 Ontario, Canada L4W 1W8
 905.238.0100 • Fax 905.366.0130

Headquarters
 20 Industrial Way, Rochester, NH 03867
Customer Service, Service Advisors
 800.900.9276 • Fax 800.559.1583
Technical Support
 603.335.6300 • Fax 603.335.3355

www.Laars.com

Litho in U.S.A. © Laars Heating Systems 1111 Document 4223A-28

DESIGN NOTES

Code	ASME IV, Part HLW
Design Pressure	125 psi
Test Pressure	125 psi

Heads	1/4" 414G
Shell	1/4" 516 Grade 70
Interior	NSF Approved
Exterior	Red Oxide Primer
Radiograph	None
Capacity	1340 gallons / 1457 nominal
Tare Weight	2182 lbs.
Support	2 Saddles

MATERIAL SPECIFICATIONS

Heads	Carbon Steel
Shell & Manway	Carbon Steel
Couplings	Carbon Steel
Anodes	Magnesium Anode Rod
Lining	Glass-Lined

OPENINGS / HEIGHTS

MARK	SIZE	DIMENSION	DESCRIPTION
A	3"		NPT Tapping
B	3"		NPT Tapping
C	1"		NPT Drain
D	1 1/4"		NPT Relief
E	3/4"		NPT Auxilliary
F	3/4"		NPT Aquastat
G		47-7/8"	Saddle Width
H		63"	Height
L		147"	Length
DIA		54"	Diameter
M		24"	NPT to Center
R		9"	Saddle to Tank

WARRANTY**FIRST THROUGH FIVE YEAR – LIMITED WARRANTY:**

Laars warrants the lined steel tank for leakage caused by defects in materials and /or workmanship for five years from date of installation. If the tank is found to be defective in manufacture, Laars will provide replacement of tank.

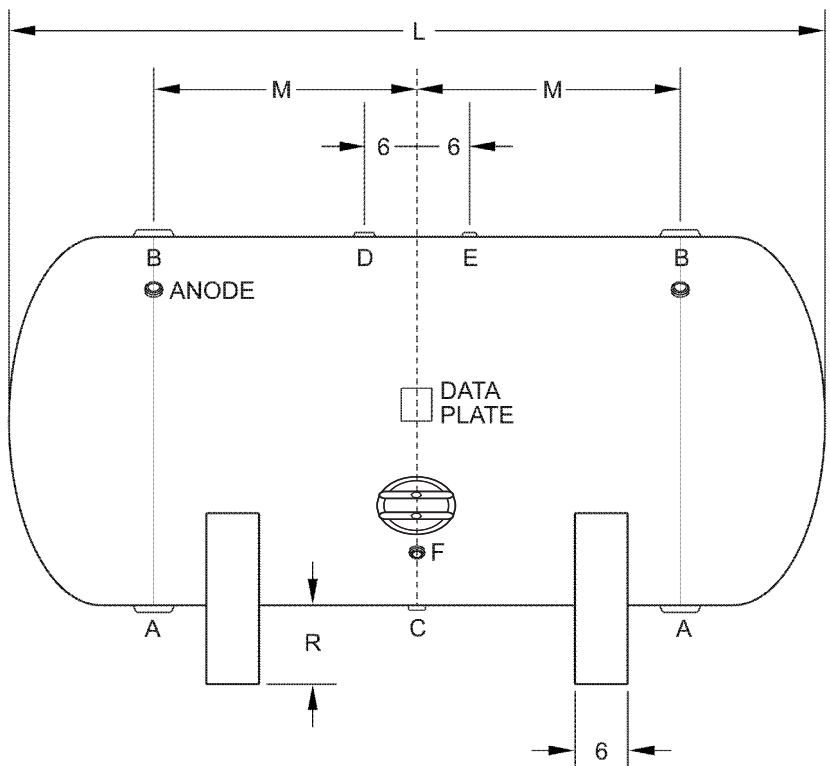
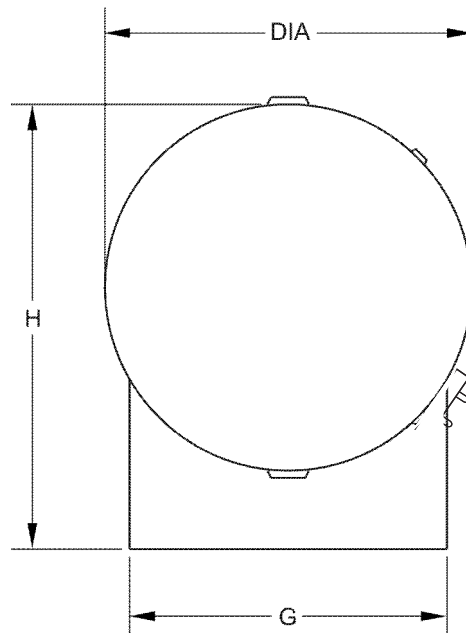
ONE YEAR – LIMITED WARRANTY:

Laars warrants parts to be free from manufacturing defects in material and workmanship for one year from date of installation. If parts are found to be defective, Laars will provide replacement of parts.

PROJECT

Customer	
Scale	Not to Scale
Date	
Customer P.O. #	
Drawing Number	BH-54-147

Horizontal Storage Tank

Size: 54-147**Submittal Data**

LAARS
Heating Systems Company
 A subsidiary of **BRADFORD WHITE** Corporation

International Sales
 1869 Sismet Road, Mississauga
 Ontario, Canada L4W 1W8
 905.238.0100 • Fax 905.366.0130

Headquarters
 20 Industrial Way, Rochester, NH 03867
Customer Service, Service Advisors
 800.900.9276 • Fax 800.559.1583

Technical Support
 603.335.6300 • Fax 603.335.3355

www.Laars.com

Litho in U.S.A. © Laars Heating Systems 1111 Document 4223A-29

DESIGN NOTES

Code	ASME IV, Part HLW
Design Pressure	125 psi
Test Pressure	125 psi

Heads	1/4" 414G
Shell	1/4" 516 Grade 70
Interior	NSF Approved
Exterior	Red Oxide Primer

Radiograph	None
Capacity	1690 gallons / 1814 nominal
Tare Weight	2622 lbs.
Support	2 Saddles

MATERIAL SPECIFICATIONS

Heads	Carbon Steel
Shell & Manway	Carbon Steel
Couplings	Carbon Steel
Anodes	Magnesium Anode Rod
Lining	Glass-Lined

OPENINGS / HEIGHTS

MARK	SIZE	DIMENSION	DESCRIPTION
A	3"		NPT Tapping
B	3"		NPT Tapping
C	1"		NPT Drain
D	1 1/4"		NPT Relief
E	3/4"		NPT Auxilliary
F	3/4"		NPT Aquastat
G		47-7/8"	Saddle Width
H		63"	Height
L		183"	Length
DIA		54"	Diameter
M		24"	NPT to Center
R		9"	Saddle to Tank

WARRANTY**FIRST THROUGH FIVE YEAR – LIMITED WARRANTY:**

Laars warrants the lined steel tank for leakage caused by defects in materials and /or workmanship for five years from date of installation. If the tank is found to be defective in manufacture, Laars will provide replacement of tank.

ONE YEAR – LIMITED WARRANTY:

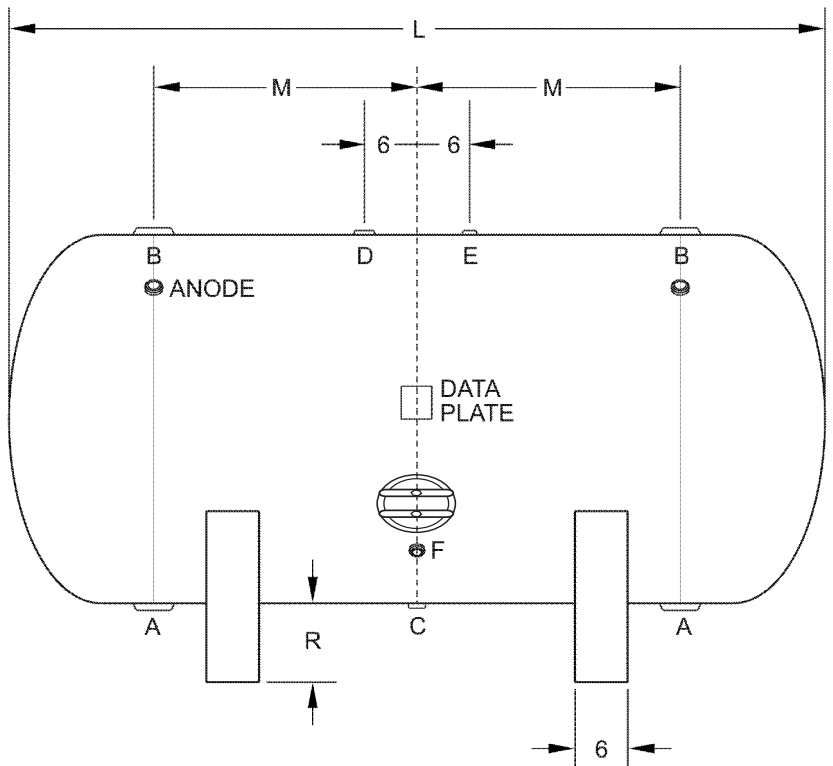
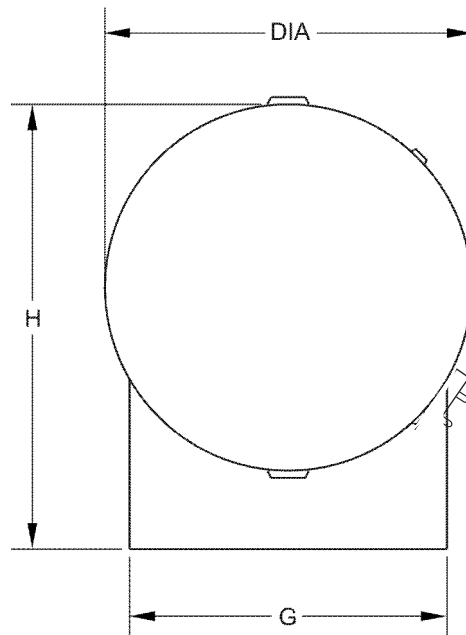
Laars warrants parts to be free from manufacturing defects in material and workmanship for one year from date of installation. If parts are found to be defective, Laars will provide replacement of parts.

PROJECT

Customer	
Scale	Not to Scale
Date	
Customer P.O. #	
Drawing Number	BH-54-183

Horizontal Storage Tank

Size: 54-183 *Submittal Data*



LAARS
Heating Systems Company
 A subsidiary of **BRADFORD WHITE** Corporation

International Sales
 1869 Sismet Road, Mississauga
 Ontario, Canada L4W 1W8
 905.238.0100 • Fax 905.366.0130

Headquarters
 20 Industrial Way, Rochester, NH 03867
Customer Service, Service Advisors
 800.900.9276 • Fax 800.559.1583

Technical Support
 603.335.6300 • Fax 603.335.3355

www.Laars.com

Litho in U.S.A. © Laars Heating Systems 1111 Document 4223A-30

DESIGN NOTES

Code	ASME IV, Part HLW
Design Pressure	125 psi
Test Pressure	125 psi

Heads	1/4" 414G
Shell	1/4" 516 Grade 70
Interior	NSF Approved
Exterior	Red Oxide Primer
Radiograph	None
Capacity	1245 gallons / 1395 nominal
Tare Weight	2299 lbs.
Support	2 Saddles

MATERIAL SPECIFICATIONS

Heads	Carbon Steel
Shell & Manway	Carbon Steel
Couplings	Carbon Steel
Anodes	Magnesium Anode Rod
Lining	Glass-Lined

OPENINGS / HEIGHTS

MARK	SIZE	DIMENSION	DESCRIPTION
A	3"		NPT Tapping
B	3"		NPT Tapping
C	1"		NPT Drain
D	1 1/4"		NPT Relief
E	3/4"		NPT Auxilliary
F	3/4"		NPT Aquastat
G		53-5/8"	Saddle Width
H		69"	Height
L		114"	Length
DIA		60"	Diameter
M		24"	NPT to Center
R		9"	Saddle to Tank

WARRANTY**FIRST THROUGH FIVE YEAR – LIMITED WARRANTY:**

Laars warrants the lined steel tank for leakage caused by defects in materials and /or workmanship for five years from date of installation. If the tank is found to be defective in manufacture, Laars will provide replacement of tank.

ONE YEAR – LIMITED WARRANTY:

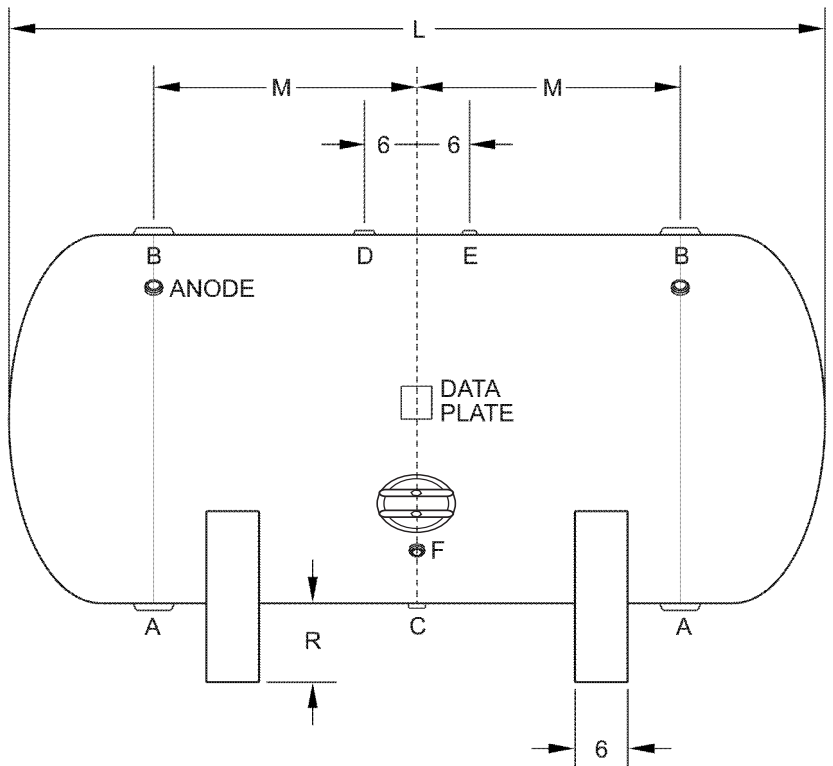
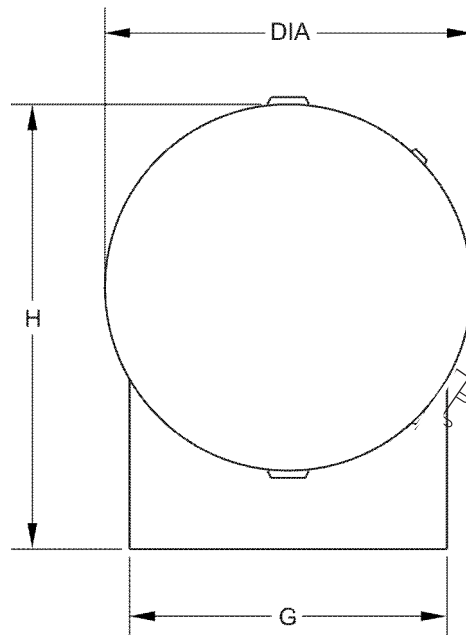
Laars warrants parts to be free from manufacturing defects in material and workmanship for one year from date of installation. If parts are found to be defective, Laars will provide replacement of parts.

PROJECT

Customer	
Scale	Not to Scale
Date	
Customer P.O. #	
Drawing Number	BH-60-114

Horizontal Storage Tank

Size: 60-114 *Submittal Data*



LAARS
Heating Systems Company
 A subsidiary of **BRADFORD WHITE** Corporation

International Sales
 1869 Sismet Road, Mississauga
 Ontario, Canada L4W 1W8
 905.238.0100 • Fax 905.366.0130

Headquarters
 20 Industrial Way, Rochester, NH 03867
Customer Service, Service Advisors
 800.900.9276 • Fax 800.559.1583

Technical Support
 603.335.6300 • Fax 603.335.3355

www.Laars.com

Litho in U.S.A. © Laars Heating Systems 1111 Document 4223A-31

DESIGN NOTES

Code	ASME IV, Part HLW
Design Pressure	125 psi
Test Pressure	125 psi

Heads	1/4" 414G
Shell	1/4" 516 Grade 70
Interior	NSF Approved
Exterior	Red Oxide Primer
Radiograph	None
Capacity	1530 gallons / 1689 nominal
Tare Weight	2704 lbs.
Support	2 Saddles

MATERIAL SPECIFICATIONS

Heads	Carbon Steel
Shell & Manway	Carbon Steel
Couplings	Carbon Steel
Anodes	Magnesium Anode Rod
Lining	Glass-Lined

OPENINGS / HEIGHTS

MARK	SIZE	DIMENSION	DESCRIPTION
A	3"		NPT Tapping
B	3"		NPT Tapping
C	1"		NPT Drain
D	1 1/4"		NPT Relief
E	3/4"		NPT Auxilliary
F	3/4"		NPT Aquastat
G		53-5/8"	Saddle Width
H		69"	Height
L		138"	Length
DIA		60"	Diameter
M		24"	NPT to Center
R		9"	Saddle to Tank

WARRANTY**FIRST THROUGH FIVE YEAR – LIMITED WARRANTY:**

Laars warrants the lined steel tank for leakage caused by defects in materials and /or workmanship for five years from date of installation. If the tank is found to be defective in manufacture, Laars will provide replacement of tank.

ONE YEAR – LIMITED WARRANTY:

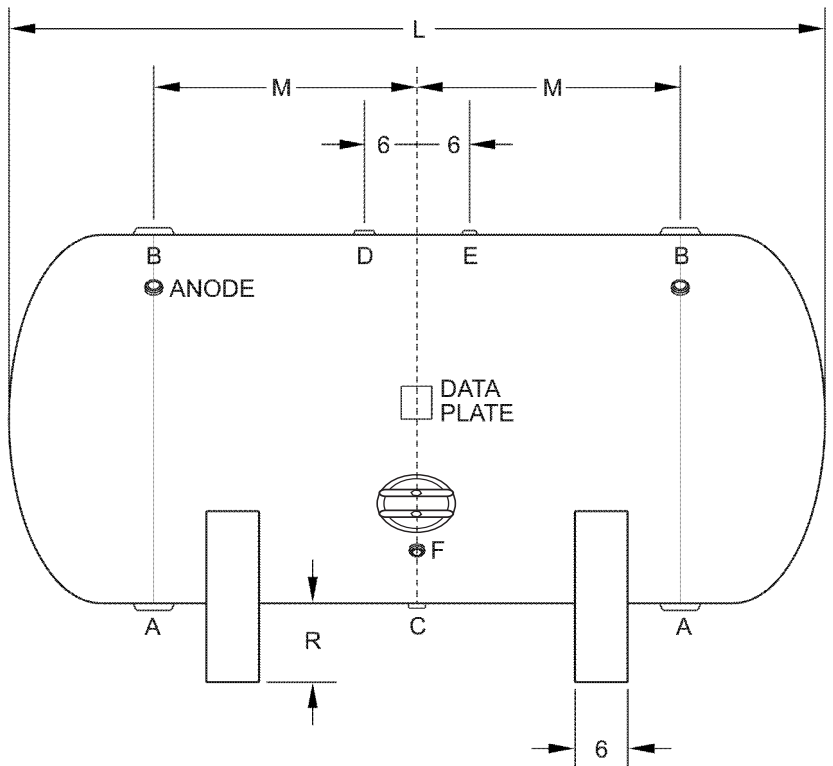
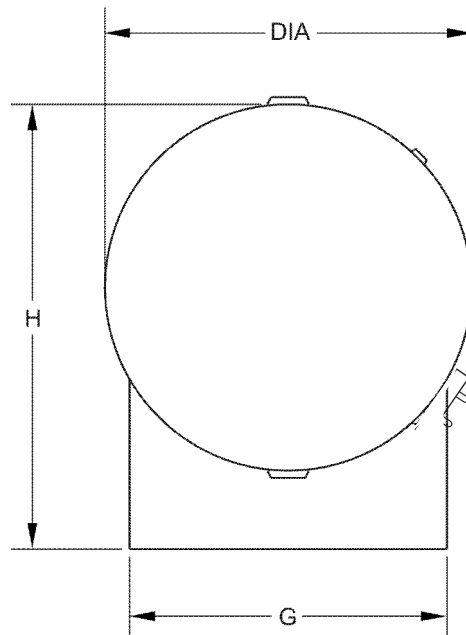
Laars warrants parts to be free from manufacturing defects in material and workmanship for one year from date of installation. If parts are found to be defective, Laars will provide replacement of parts.

PROJECT

Customer	
Scale	Not to Scale
Date	
Customer P.O. #	
Drawing Number	BH-60-138

Horizontal Storage Tank

Size: 60-138 *Submittal Data*



LAARS
Heating Systems Company
 A subsidiary of **BRADFORD WHITE** Corporation

International Sales
 1869 Sismet Road, Mississauga
 Ontario, Canada L4W 1W8
 905.238.0100 • Fax 905.366.0130

Headquarters
 20 Industrial Way, Rochester, NH 03867
Customer Service, Service Advisors
 800.900.9276 • Fax 800.559.1583

Technical Support
 603.335.6300 • Fax 603.335.3355

www.Laars.com

Litho in U.S.A. © Laars Heating Systems 1111 Document 4223A-32

DESIGN NOTES

Code	ASME IV, Part HLW
Design Pressure	125 psi
Test Pressure	125 psi

Heads	1/4" 414G
Shell	1/4" 516 Grade 70
Interior	NSF Approved
Exterior	Red Oxide Primer

Radiograph	None
Capacity	1820 gallons / 1983 nominal
Tare Weight	3110 lbs.
Support	2 Saddles

MATERIAL SPECIFICATIONS

Heads	Carbon Steel
Shell & Manway	Carbon Steel
Couplings	Carbon Steel
Anodes	Magnesium Anode Rod
Lining	Glass-Lined

OPENINGS / HEIGHTS

MARK	SIZE	DIMENSION	DESCRIPTION
A	3"		NPT Tapping
B	3"		NPT Tapping
C	1"		NPT Drain
D	1 1/4"		NPT Relief
E	3/4"		NPT Auxilliary
F	3/4"		NPT Aquastat
G		53-5/8"	Saddle Width
H		69"	Height
L		168"	Length
DIA		60"	Diameter
M		24"	NPT to Center
R		9"	Saddle to Tank

WARRANTY**FIRST THROUGH FIVE YEAR – LIMITED WARRANTY:**

Laars warrants the lined steel tank for leakage caused by defects in materials and /or workmanship for five years from date of installation. If the tank is found to be defective in manufacture, Laars will provide replacement of tank.

ONE YEAR – LIMITED WARRANTY: Laars warrants parts to be free from manufacturing defects in material and workmanship for one year from date of installation. If parts are found to be defective, Laars will provide replacement of parts.

PROJECT

Customer

Scale Not to Scale

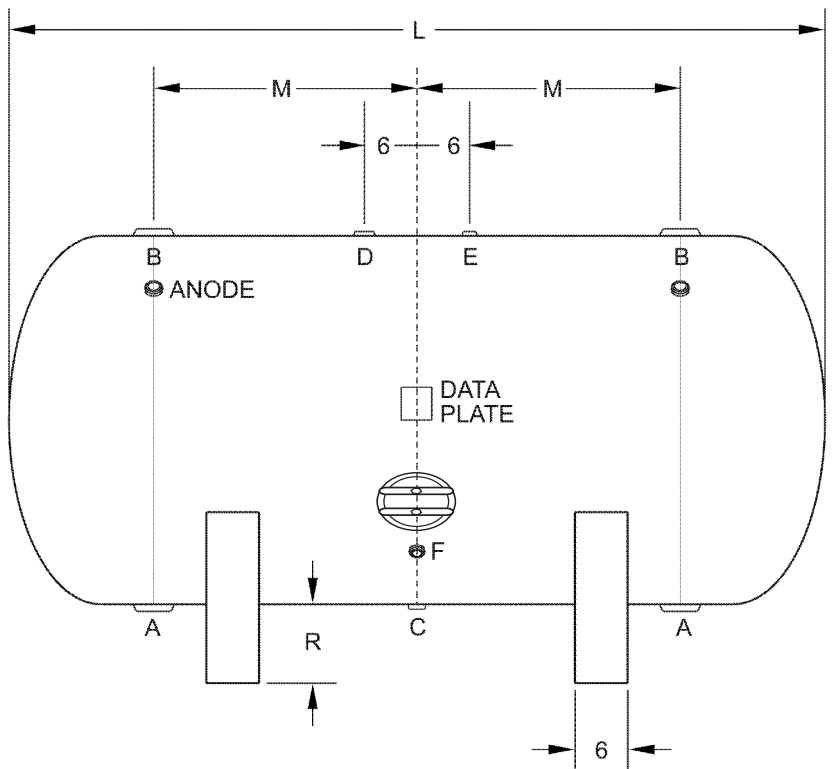
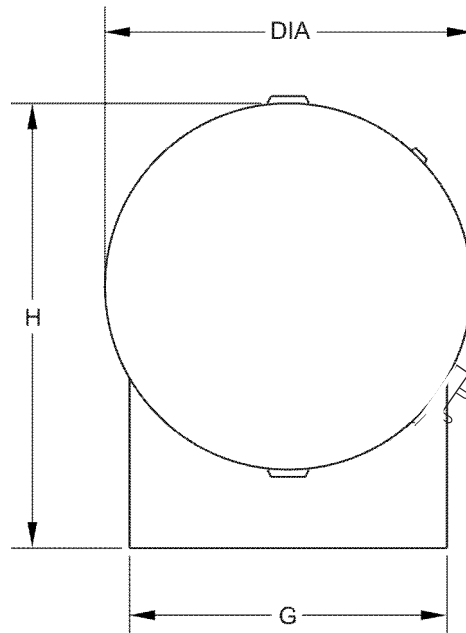
Date

Customer P.O. #

Drawing Number BH-60-168

Horizontal Storage Tank

Size: 60-168 *Submittal Data*



LAARS
Heating Systems Company
 A subsidiary of **BRADFORD WHITE** Corporation

International Sales
 1869 Sismet Road, Mississauga
 Ontario, Canada L4W 1W8
 905.238.0100 • Fax 905.366.0130

Headquarters
 20 Industrial Way, Rochester, NH 03867
Customer Service, Service Advisors
 800.900.9276 • Fax 800.559.1583

Technical Support
 603.335.6300 • Fax 603.335.3355

www.Laars.com

Litho in U.S.A. © Laars Heating Systems 1111 Document 4223A-33

DESIGN NOTES

Code	ASME IV, Part HLW
Design Pressure	125 psi
Test Pressure	125 psi

Heads	1/4" 414G
Shell	1/4" 516 Grade 70
Interior	NSF Approved
Exterior	Red Oxide Primer

Radiograph	None
Capacity	2105 gallons / 2276 nominal
Tare Weight	3516 lbs.
Support	2 Saddles

MATERIAL SPECIFICATIONS

Heads	Carbon Steel
Shell & Manway	Carbon Steel
Couplings	Carbon Steel
Anodes	Magnesium Anode Rod
Lining	Glass-Lined

OPENINGS / HEIGHTS

MARK	SIZE	DIMENSION	DESCRIPTION
A	3"		NPT Tapping
B	3"		NPT Tapping
C	1"		NPT Drain
D	1 1/4"		NPT Relief
E	3/4"		NPT Auxilliary
F	3/4"		NPT Aquastat
G		53-5/8"	Saddle Width
H		69"	Height
L		186"	Length
DIA		60"	Diameter
M		24"	NPT to Center
R		9"	Saddle to Tank

WARRANTY**FIRST THROUGH FIVE YEAR – LIMITED WARRANTY:**

Laars warrants the lined steel tank for leakage caused by defects in materials and /or workmanship for five years from date of installation. If the tank is found to be defective in manufacture, Laars will provide replacement of tank.

ONE YEAR – LIMITED WARRANTY: Laars warrants parts to be free from manufacturing defects in material and workmanship for one year from date of installation. If parts are found to be defective, Laars will provide replacement of parts.

PROJECT

Customer

Scale Not to Scale

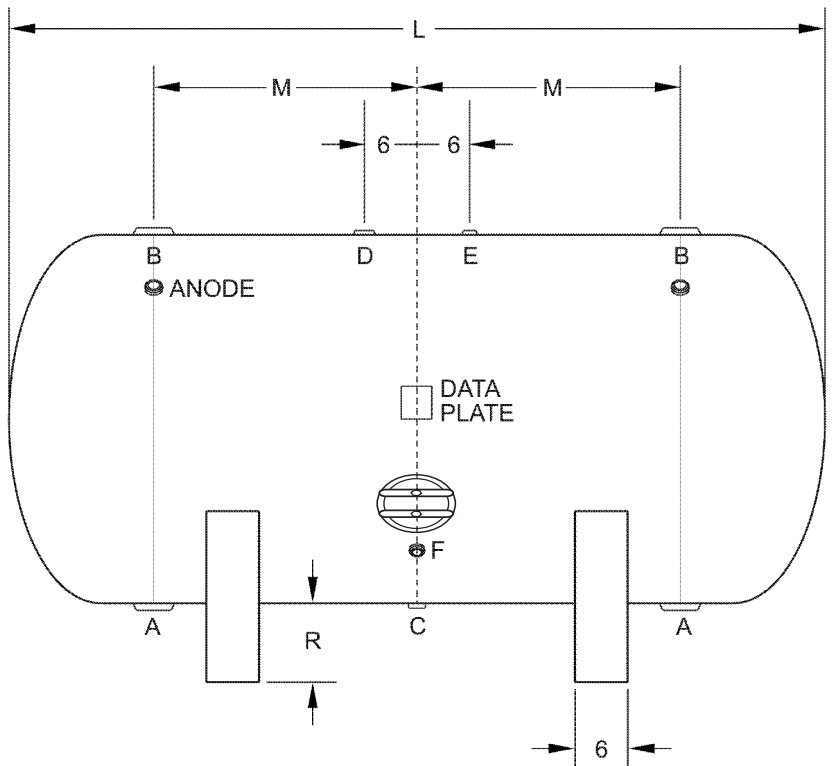
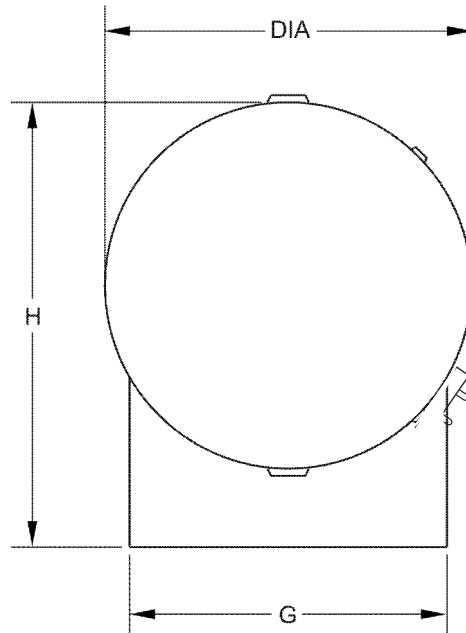
Date

Customer P.O. #

Drawing Number BH-60-186

Horizontal Storage Tank

Size: 60-186 *Submittal Data*



LAARS
Heating Systems Company
 A subsidiary of **BRADFORD WHITE** Corporation

International Sales
 1869 Sismet Road, Mississauga
 Ontario, Canada L4W 1W8
 905.238.0100 • Fax 905.366.0130

Headquarters
 20 Industrial Way, Rochester, NH 03867
Customer Service, Service Advisors
 800.900.9276 • Fax 800.559.1583

Technical Support
 603.335.6300 • Fax 603.335.3355

www.Laars.com

Litho in U.S.A. © Laars Heating Systems 1111 Document 4223A-34

DESIGN NOTES

Code	ASME IV, Part HLW
Design Pressure	125 psi
Test Pressure	125 psi

Heads	1/4" 414G
Shell	1/4" 516 Grade 70
Interior	NSF Approved
Exterior	Red Oxide Primer

Radiograph	None
Capacity	2395 gallons / 2570 nominal
Tare Weight	3922 lbs.
Support	2 Saddles

MATERIAL SPECIFICATIONS

Heads	Carbon Steel
Shell & Manway	Carbon Steel
Couplings	Carbon Steel
Anodes	Magnesium Anode Rod
Lining	Glass-Lined

OPENINGS / HEIGHTS

MARK	SIZE	DIMENSION	DESCRIPTION
A	3"		NPT Tapping
B	3"		NPT Tapping
C	1"		NPT Drain
D	1 1/4"		NPT Relief
E	3/4"		NPT Auxilliary
F	3/4"		NPT Aquastat
G		53-5/8"	Saddle Width
H		69"	Height
L		210"	Length
DIA		60"	Diameter
M		24"	NPT to Center
R		9"	Saddle to Tank

WARRANTY**FIRST THROUGH FIVE YEAR – LIMITED WARRANTY:**

Laars warrants the lined steel tank for leakage caused by defects in materials and /or workmanship for five years from date of installation. If the tank is found to be defective in manufacture, Laars will provide replacement of tank.

ONE YEAR – LIMITED WARRANTY: Laars warrants parts to be free from manufacturing defects in material and workmanship for one year from date of installation. If parts are found to be defective, Laars will provide replacement of parts.

PROJECT

Customer

Scale Not to Scale

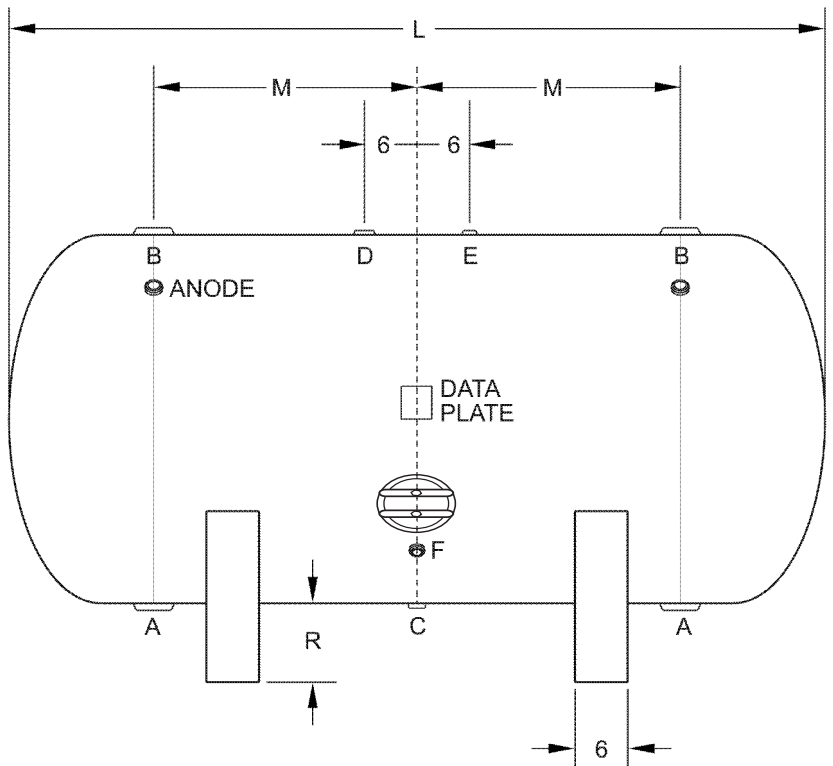
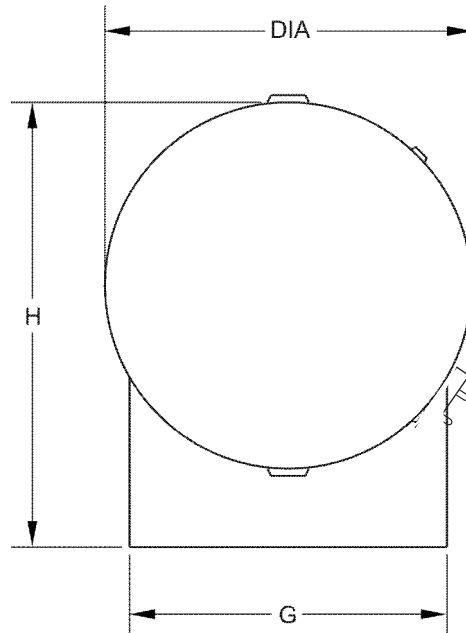
Date

Customer P.O. #

Drawing Number BH-60-210

Horizontal Storage Tank

Size: 60-210 *Submittal Data*



LAARS
Heating Systems Company
 A subsidiary of **BRADFORD WHITE** Corporation

International Sales
 1869 Sismet Road, Mississauga
 Ontario, Canada L4W 1W8
 905.238.0100 • Fax 905.366.0130

Headquarters
 20 Industrial Way, Rochester, NH 03867
Customer Service, Service Advisors
 800.900.9276 • Fax 800.559.1583

Technical Support
 603.335.6300 • Fax 603.335.3355

www.Laars.com

Litho in U.S.A. © Laars Heating Systems 1111 Document 4223A-35

DESIGN NOTES

Code	ASME IV, Part HLW
Design Pressure	125 psi
Test Pressure	125 psi
Heads	1/4" 414G
Shell	1/4" 516 Grade 70
Interior	NSF Approved
Exterior	Red Oxide Primer
Radiograph	None
Capacity	1865 gallons / 2115 nominal
Tare Weight	2876 lbs.
Support	2 Saddles

MATERIAL SPECIFICATIONS

Heads	Carbon Steel
Shell & Manway	Carbon Steel
Couplings	Carbon Steel
Anodes	Magnesium Anode Rod
Lining	Glass-Lined

OPENINGS / HEIGHTS

MARK	SIZE	DIMENSION	DESCRIPTION
A	3"		NPT Tapping
B	3"		NPT Tapping
C	1"		NPT Drain
D	1 1/4"		NPT Relief
E	3/4"		NPT Auxilliary
F	3/4"		NPT Aquastat
G		65-3/8"	Saddle Width
H		81"	Height
L		120"	Length
DIA		72"	Diameter
M		24"	NPT to Center
R		9"	Saddle to Tank

WARRANTY**FIRST THROUGH FIVE YEAR – LIMITED WARRANTY:**

Laars warrants the lined steel tank for leakage caused by defects in materials and /or workmanship for five years from date of installation. If the tank is found to be defective in manufacture, Laars will provide replacement of tank.

ONE YEAR – LIMITED WARRANTY:

Laars warrants parts to be free from manufacturing defects in material and workmanship for one year from date of installation. If parts are found to be defective, Laars will provide replacement of parts.

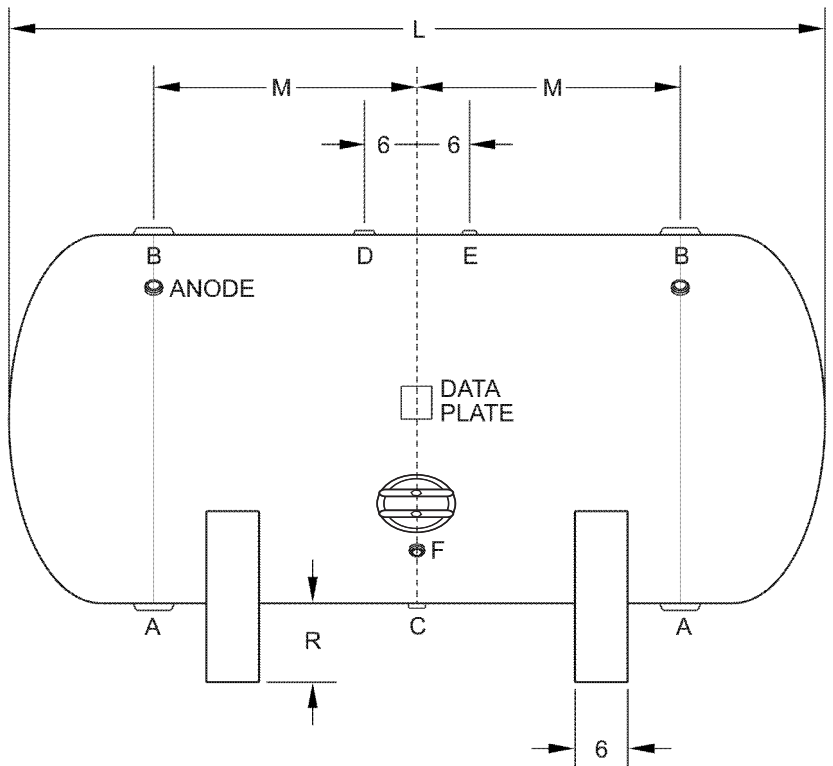
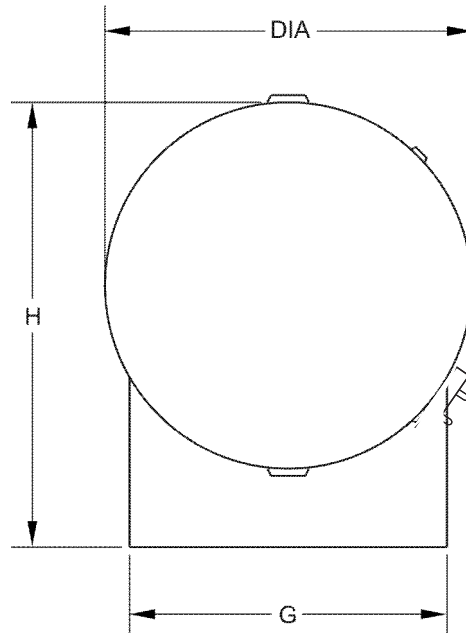
PROJECT

Customer	
Scale	Not to Scale
Date	
Customer P.O. #	
Drawing Number	BH-72-120

Horizontal Storage Tank

Size: 72-120

Submittal Data



LAARS
Heating Systems Company
 A subsidiary of **BRADFORD WHITE** Corporation

International Sales
 1869 Sismet Road, Mississauga
 Ontario, Canada L4W 1W8
 905.238.0100 • Fax 905.366.0130

Headquarters
 20 Industrial Way, Rochester, NH 03867
Customer Service, Service Advisors
 800.900.9276 • Fax 800.559.1583

Technical Support
 603.335.6300 • Fax 603.335.3355

www.Laars.com

Litho in U.S.A. © Laars Heating Systems 1111 Document 4223A-36

DESIGN NOTES

Code	ASME IV, Part HLW
Design Pressure	125 psi
Test Pressure	125 psi

Heads	1/4" 414G
Shell	1/4" 516 Grade 70
Interior	NSF Approved
Exterior	Red Oxide Primer

Radiograph	None
Capacity	2285 gallons / 2538 nominal
Tare Weight	3363 lbs.
Support	2 Saddles

MATERIAL SPECIFICATIONS

Heads	Carbon Steel
Shell & Manway	Carbon Steel
Couplings	Carbon Steel
Anodes	Magnesium Anode Rod
Lining	Glass-Lined

OPENINGS / HEIGHTS

MARK	SIZE	DIMENSION	DESCRIPTION
A	3"		NPT Tapping
B	3"		NPT Tapping
C	1"		NPT Drain
D	1 1/4"		NPT Relief
E	3/4"		NPT Auxilliary
F	3/4"		NPT Aquastat
G		65-3/8"	Saddle Width
H		81"	Height
L		144"	Length
DIA		72"	Diameter
M		24"	NPT to Center
R		9"	Saddle to Tank

WARRANTY**FIRST THROUGH FIVE YEAR – LIMITED WARRANTY:**

Laars warrants the lined steel tank for leakage caused by defects in materials and /or workmanship for five years from date of installation. If the tank is found to be defective in manufacture, Laars will provide replacement of tank.

ONE YEAR – LIMITED WARRANTY: Laars warrants parts to be free from manufacturing defects in material and workmanship for one year from date of installation. If parts are found to be defective, Laars will provide replacement of parts.

PROJECT

Customer

Scale Not to Scale

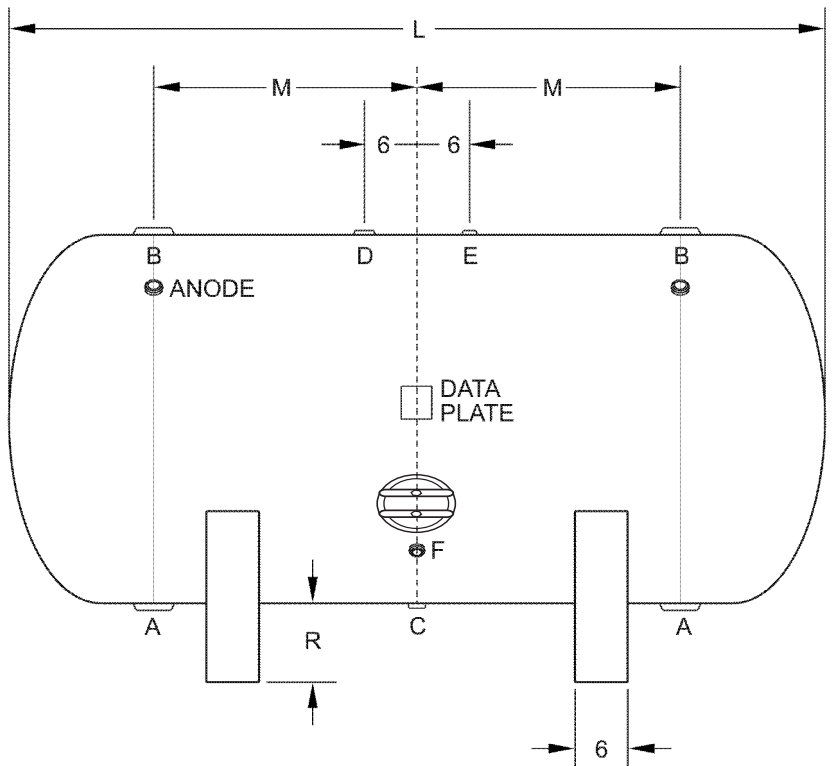
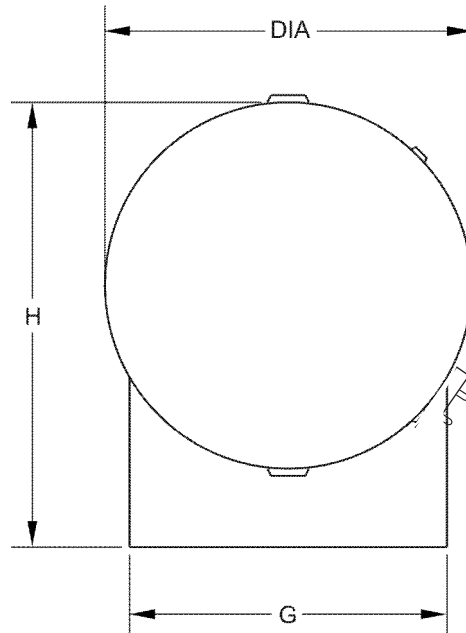
Date

Customer P.O. #

Drawing Number BH-72-144

Horizontal Storage Tank

Size: 72-144 *Submittal Data*



LAARS
Heating Systems Company
 A subsidiary of **BRADFORD WHITE** Corporation

International Sales
 1869 Sismet Road, Mississauga
 Ontario, Canada L4W 1W8
 905.238.0100 • Fax 905.366.0130

Headquarters
 20 Industrial Way, Rochester, NH 03867
Customer Service, Service Advisors
 800.900.9276 • Fax 800.559.1583

Technical Support
 603.335.6300 • Fax 603.335.3355

www.Laars.com

Litho in U.S.A. © Laars Heating Systems 1111 Document 4223A-37

DESIGN NOTES

Code	ASME IV, Part HLW
Design Pressure	125 psi
Test Pressure	125 psi

Heads	1/4" 414G
Shell	1/4" 516 Grade 70
Interior	NSF Approved
Exterior	Red Oxide Primer

Radiograph	None
Capacity	2700 gallons / 2961 nominal
Tare Weight	3851 lbs.
Support	2 Saddles

MATERIAL SPECIFICATIONS

Heads	Carbon Steel
Shell & Manway	Carbon Steel
Couplings	Carbon Steel
Anodes	Magnesium Anode Rod
Lining	Glass-Lined

OPENINGS / HEIGHTS

MARK	SIZE	DIMENSION	DESCRIPTION
A	3"		NPT Tapping
B	3"		NPT Tapping
C	1"		NPT Drain
D	1 1/4"		NPT Relief
E	3/4"		NPT Auxilliary
F	3/4"		NPT Aquastat
G		65-3/8"	Saddle Width
H		81"	Height
L		168"	Length
DIA		72"	Diameter
M		24"	NPT to Center
R		9"	Saddle to Tank

WARRANTY**FIRST THROUGH FIVE YEAR – LIMITED WARRANTY:**

Laars warrants the lined steel tank for leakage caused by defects in materials and /or workmanship for five years from date of installation. If the tank is found to be defective in manufacture, Laars will provide replacement of tank.

ONE YEAR – LIMITED WARRANTY: Laars warrants parts to be free from manufacturing defects in material and workmanship for one year from date of installation. If parts are found to be defective, Laars will provide replacement of parts.

PROJECT

Customer

Scale Not to Scale

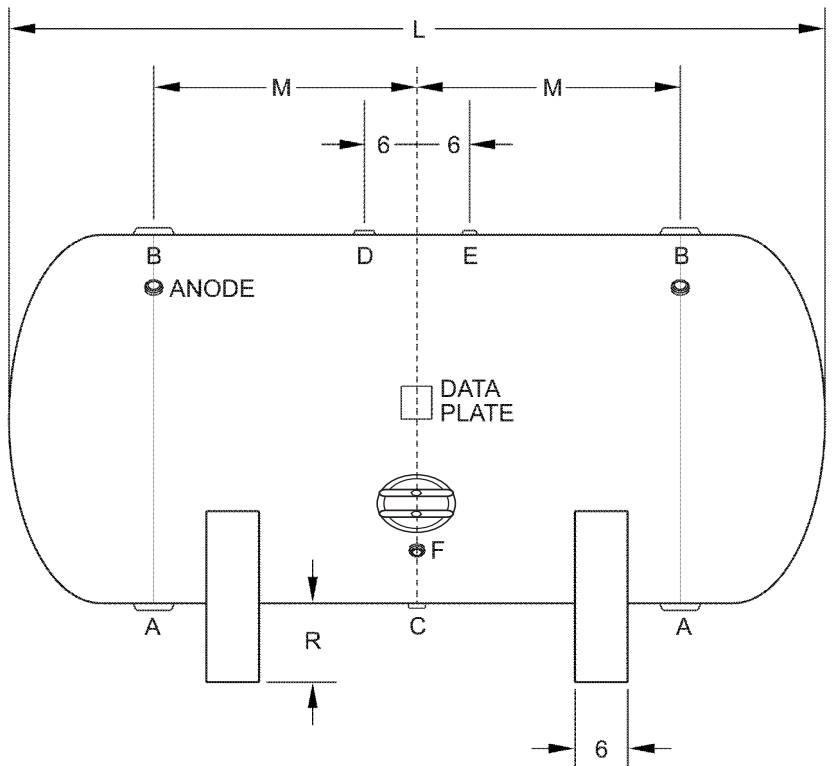
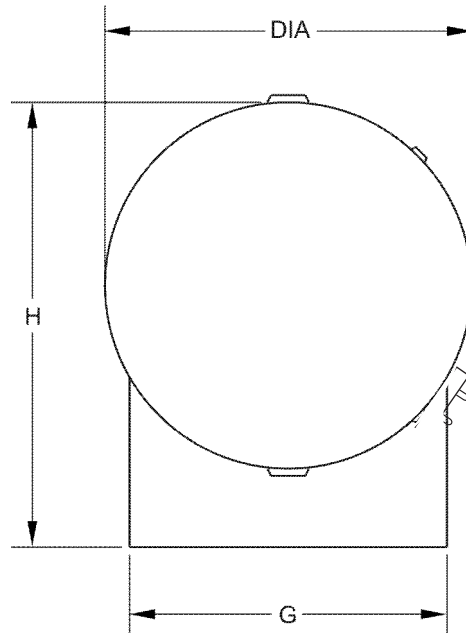
Date

Customer P.O. #

Drawing Number BH-72-168

Horizontal Storage Tank

Size: 72-168 *Submittal Data*



LAARS
Heating Systems Company
 A subsidiary of **BRADFORD WHITE** Corporation

International Sales
 1869 Sismet Road, Mississauga
 Ontario, Canada L4W 1W8
 905.238.0100 • Fax 905.366.0130

Headquarters
 20 Industrial Way, Rochester, NH 03867
Customer Service, Service Advisors
 800.900.9276 • Fax 800.559.1583

Technical Support
 603.335.6300 • Fax 603.335.3355

www.Laars.com

Litho in U.S.A. © Laars Heating Systems 1111 Document 4223A-38

DESIGN NOTES

Code	ASME IV, Part HLW
Design Pressure	125 psi
Test Pressure	125 psi

Heads	1/4" 414G
Shell	1/4" 516 Grade 70
Interior	NSF Approved
Exterior	Red Oxide Primer

Radiograph	None
Capacity	3115 gallons / 3384 nominal
Tare Weight	4338 lbs.
Support	2 Saddles

MATERIAL SPECIFICATIONS

Heads	Carbon Steel
Shell & Manway	Carbon Steel
Couplings	Carbon Steel
Anodes	Magnesium Anode Rod
Lining	Glass-Lined

OPENINGS / HEIGHTS

MARK	SIZE	DIMENSION	DESCRIPTION
A	3"		NPT Tapping
B	3"		NPT Tapping
C	1"		NPT Drain
D	1 1/4"		NPT Relief
E	3/4"		NPT Auxilliary
F	3/4"		NPT Aquastat
G		65-3/8"	Saddle Width
H		81"	Height
L		192"	Length
DIA		72"	Diameter
M		24"	NPT to Center
R		9"	Saddle to Tank

WARRANTY**FIRST THROUGH FIVE YEAR – LIMITED WARRANTY:**

Laars warrants the lined steel tank for leakage caused by defects in materials and /or workmanship for five years from date of installation. If the tank is found to be defective in manufacture, Laars will provide replacement of tank.

ONE YEAR – LIMITED WARRANTY: Laars warrants parts to be free from manufacturing defects in material and workmanship for one year from date of installation. If parts are found to be defective, Laars will provide replacement of parts.

PROJECT

Customer

Scale Not to Scale

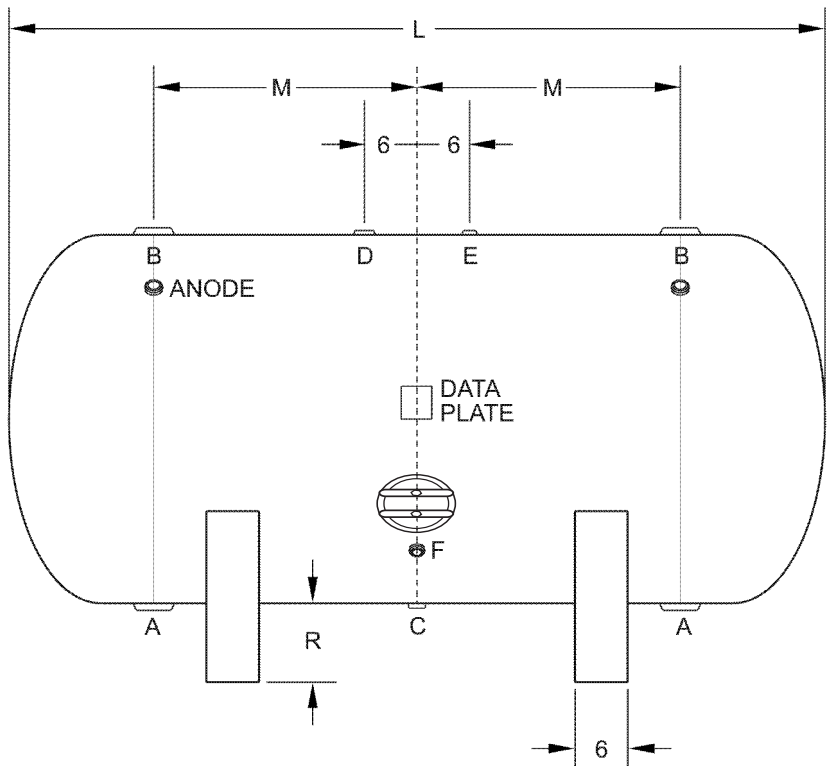
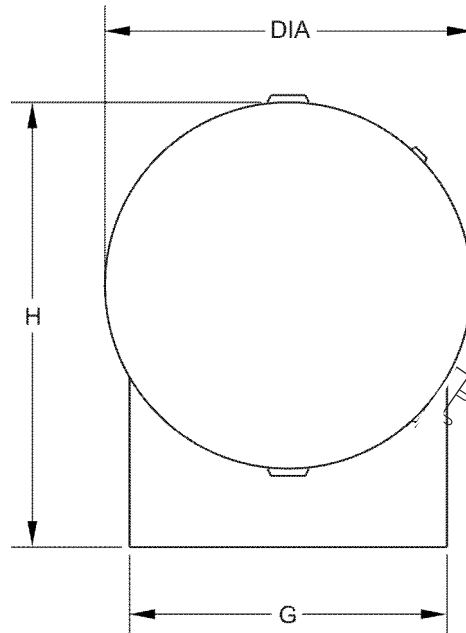
Date

Customer P.O. #

Drawing Number BH-72-192

Horizontal Storage Tank

Size: 72-192 *Submittal Data*



LAARS
Heating Systems Company
 A subsidiary of **BRADFORD WHITE** Corporation

International Sales
 1869 Sismet Road, Mississauga
 Ontario, Canada L4W 1W8
 905.238.0100 • Fax 905.366.0130

Headquarters
 20 Industrial Way, Rochester, NH 03867
Customer Service, Service Advisors
 800.900.9276 • Fax 800.559.1583

Technical Support
 603.335.6300 • Fax 603.335.3355

www.Laars.com

Litho in U.S.A. © Laars Heating Systems 1111 Document 4223A-39

DESIGN NOTES

Code	ASME IV, Part HLW
Design Pressure	125 psi
Test Pressure	125 psi

Heads	1/4" 414G
Shell	1/4" 516 Grade 70
Interior	NSF Approved
Exterior	Red Oxide Primer

Radiograph	None
Capacity	3530 gallons / 3807 nominal
Tare Weight	4825 lbs.
Support	2 Saddles

MATERIAL SPECIFICATIONS

Heads	Carbon Steel
Shell & Manway	Carbon Steel
Couplings	Carbon Steel
Anodes	Magnesium Anode Rod
Lining	Glass-Lined

OPENINGS / HEIGHTS

MARK	SIZE	DIMENSION	DESCRIPTION
A	3"		NPT Tapping
B	3"		NPT Tapping
C	1"		NPT Drain
D	1 1/4"		NPT Relief
E	3/4"		NPT Auxilliary
F	3/4"		NPT Aquastat
G		65-3/8"	Saddle Width
H		81"	Height
L		216"	Length
DIA		72"	Diameter
M		24"	NPT to Center
R		9"	Saddle to Tank

WARRANTY**FIRST THROUGH FIVE YEAR – LIMITED WARRANTY:**

Laars warrants the lined steel tank for leakage caused by defects in materials and /or workmanship for five years from date of installation. If the tank is found to be defective in manufacture, Laars will provide replacement of tank.

ONE YEAR – LIMITED WARRANTY: Laars warrants parts to be free from manufacturing defects in material and workmanship for one year from date of installation. If parts are found to be defective, Laars will provide replacement of parts.

PROJECT

Customer

Scale Not to Scale

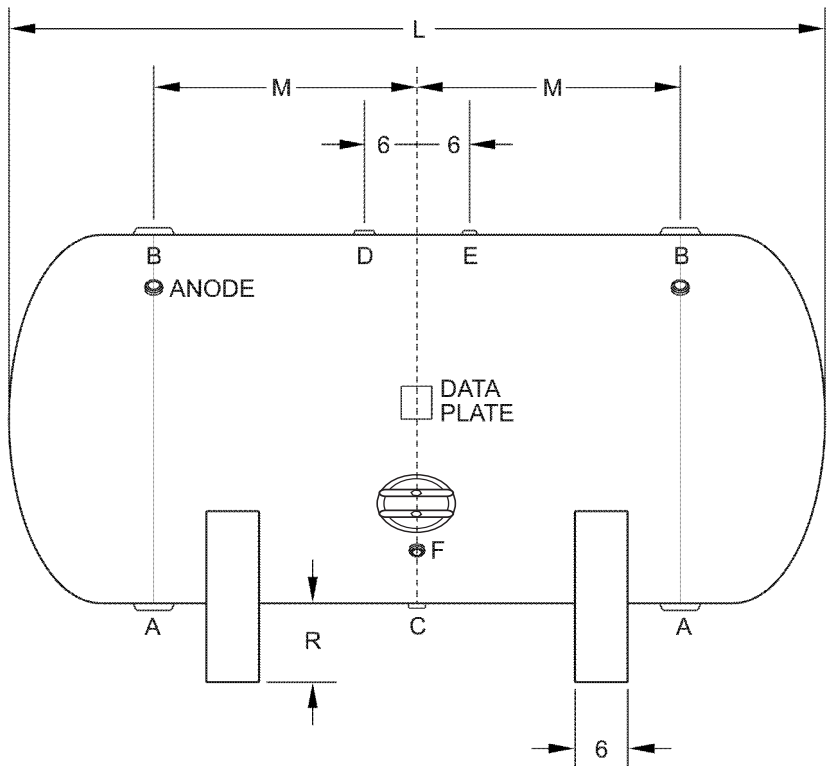
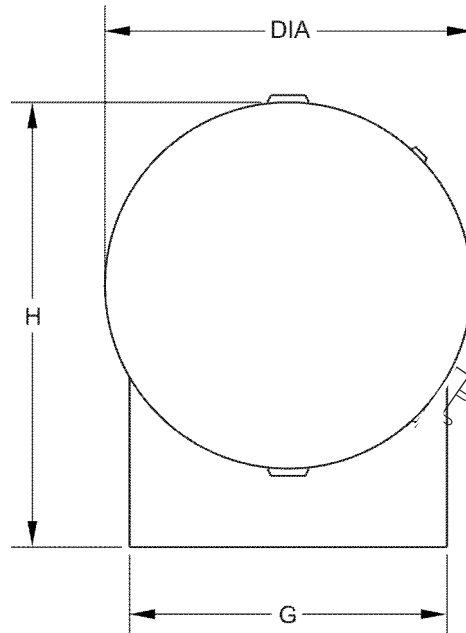
Date

Customer P.O. #

Drawing Number BH-72-216

Horizontal Storage Tank

Size: 72-216 *Submittal Data*



LAARS
Heating Systems Company
 A subsidiary of **BRADFORD WHITE** Corporation

International Sales
 1869 Sismet Road, Mississauga
 Ontario, Canada L4W 1W8
 905.238.0100 • Fax 905.366.0130

Headquarters
 20 Industrial Way, Rochester, NH 03867
Customer Service, Service Advisors
 800.900.9276 • Fax 800.559.1583

Technical Support
 603.335.6300 • Fax 603.335.3355

www.Laars.com

Litho in U.S.A. © Laars Heating Systems 1111 Document 4223A-40

DESIGN NOTES

Code	ASME IV, Part HLW
Design Pressure	125 psi
Test Pressure	125 psi
Heads	1/4" 414G
Shell	1/4" 516 Grade 70
Interior	NSF Approved
Exterior	Red Oxide Primer
Radiograph	None
Capacity	4120 gallons / 4406 nominal
Tare Weight	5516 lbs.
Support	2 Saddles

MATERIAL SPECIFICATIONS

Heads	Carbon Steel
Shell & Manway	Carbon Steel
Couplings	Carbon Steel
Anodes	Magnesium Anode Rod
Lining	Glass-Lined

OPENINGS / HEIGHTS

MARK	SIZE	DIMENSION	DESCRIPTION
A	3"		NPT Tapping
B	3"		NPT Tapping
C	1"		NPT Drain
D	1 1/4"		NPT Relief
E	3/4"		NPT Auxilliary
F	3/4"		NPT Aquastat
G		65-3/8"	Saddle Width
H		81"	Height
L		250"	Length
DIA		72"	Diameter
M		24"	NPT to Center
R		9"	Saddle to Tank

WARRANTY**FIRST THROUGH FIVE YEAR – LIMITED WARRANTY:**

Laars warrants the lined steel tank for leakage caused by defects in materials and /or workmanship for five years from date of installation. If the tank is found to be defective in manufacture, Laars will provide replacement of tank.

ONE YEAR – LIMITED WARRANTY: Laars warrants parts to be free from manufacturing defects in material and workmanship for one year from date of installation. If parts are found to be defective, Laars will provide replacement of parts.

PROJECT

Customer

Scale Not to Scale

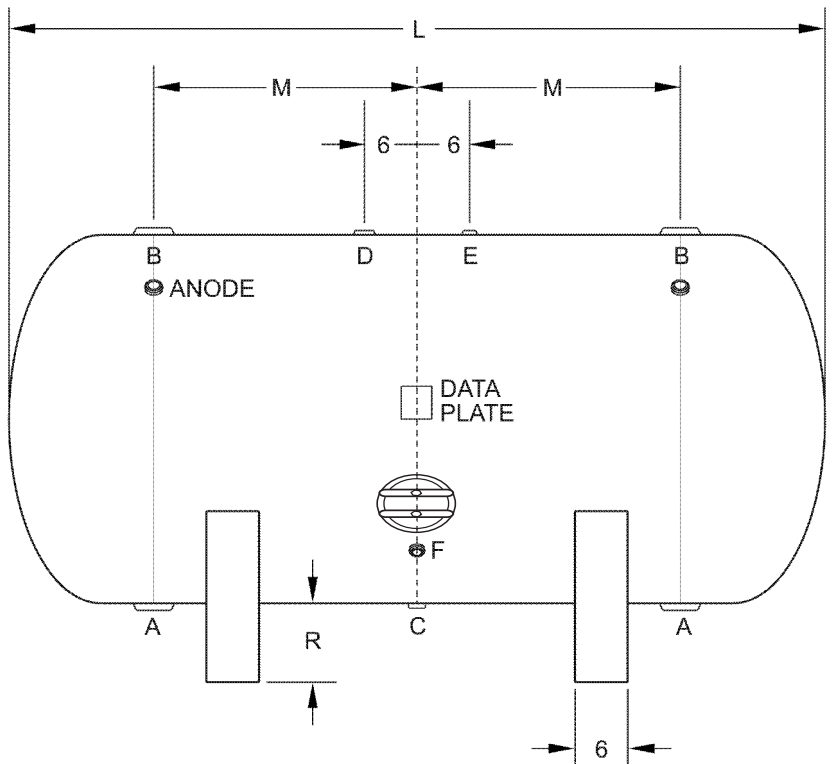
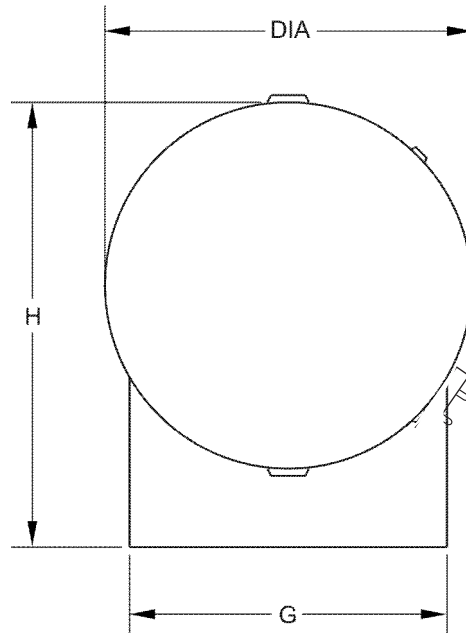
Date

Customer P.O. #

Drawing Number BH-72-250

Horizontal Storage Tank

Size: 72-250 *Submittal Data*



LAARS
Heating Systems Company
 A subsidiary of **BRADFORD WHITE** Corporation

International Sales
 1869 Sismet Road, Mississauga
 Ontario, Canada L4W 1W8
 905.238.0100 • Fax 905.366.0130

Headquarters
 20 Industrial Way, Rochester, NH 03867
Customer Service, Service Advisors
 800.900.9276 • Fax 800.559.1583

Technical Support
 603.335.6300 • Fax 603.335.3355

www.Laars.com

Litho in U.S.A. © Laars Heating Systems 1111 Document 4223A-41

	DESIGN NOTES
Code	ASME IV, Part HLW
Design Pressure	125 psi
Test Pressure	125 psi
Heads	1/4" 414G
Shell	1/4" 516 Grade 70
Interior	NSF Approved
Exterior	Red Oxide Primer
Radiograph	None
Capacity	2915 gallons / 3310 nominal
Tare Weight	4647 lbs.
Support	2 Saddles

	MATERIAL SPECIFICATIONS
Heads	Carbon Steel
Shell & Manway	Carbon Steel
Couplings	Carbon Steel
Anodes	Magnesium Anode Rod
Lining	Glass-Lined

Heads	Carbon Steel
Shell & Manway	Carbon Steel
Couplings	Carbon Steel
Anodes	Magnesium Anode Rod
Lining	Glass-Lined

MARK	SIZE	DIMENSION	DESCRIPTION
A	3"		NPT Tapping
B	3"		NPT Tapping
C	1"		NPT Drain
D	1¼"		NPT Relief
E	¾"		NPT Auxilliary
F	¾"		NPT Aquastat
G		77-1/8"	Saddle Width
H		93"	Height
L		138"	Length
DIA		84"	Diameter
M		24"	NPT to Center
R		9"	Saddle to Tank

WARRANTY

FIRST THROUGH FIVE YEAR – LIMITED WARRANTY:

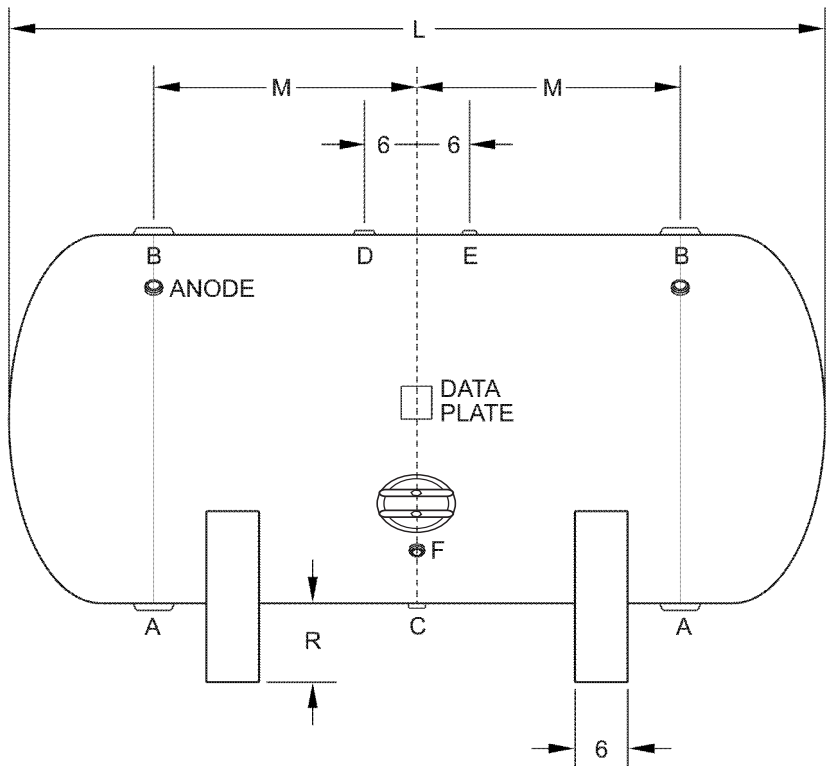
Laars warrants the lined steel tank for leakage caused by defects in materials and /or workmanship for five years from date of installation. If the tank is found to be defective in manufacture, Laars will provide replacement of tank.

ONE YEAR – LIMITED WARRANTY: Laars warrants parts to be free from manufacturing defects in material and workmanship for one year from date of installation. If parts are found to be defective, Laars will provide replacement of parts.

Customer	
Scale	Not to Scale
Date	
Customer P.O. #	
Drawing Number	BH-84-138

Horizontal Storage Tank

Size: 84-138 *Submittal Data*



International Sales
1869 Sismet Road, Mississauga
Ontario, Canada L4W 1W8
905.238.0100 • Fax 905.366.0130

Technical Support
603.335.6300 • Fax 603.335.3355

www.Laars.com
Litho in U.S.A. © Laars Heating Systems 1111 Document 4223A-42

DESIGN NOTES

Code	ASME IV, Part HLW
Design Pressure	125 psi
Test Pressure	125 psi

Heads	1/4" 414G
Shell	1/4" 516 Grade 70
Interior	NSF Approved
Exterior	Red Oxide Primer

Radiograph	None
Capacity	3480 gallons / 3886 nominal
Tare Weight	5328 lbs.
Support	2 Saddles

MATERIAL SPECIFICATIONS

Heads	Carbon Steel
Shell & Manway	Carbon Steel
Couplings	Carbon Steel
Anodes	Magnesium Anode Rod
Lining	Glass-Lined

OPENINGS / HEIGHTS

MARK	SIZE	DIMENSION	DESCRIPTION
A	3"		NPT Tapping
B	3"		NPT Tapping
C	1"		NPT Drain
D	1 1/4"		NPT Relief
E	3/4"		NPT Auxilliary
F	3/4"		NPT Aquastat
G		77-1/8"	Saddle Width
H		93"	Height
L		162"	Length
DIA		84"	Diameter
M		24"	NPT to Center
R		9"	Saddle to Tank

WARRANTY**FIRST THROUGH FIVE YEAR – LIMITED WARRANTY:**

Laars warrants the lined steel tank for leakage caused by defects in materials and /or workmanship for five years from date of installation. If the tank is found to be defective in manufacture, Laars will provide replacement of tank.

ONE YEAR – LIMITED WARRANTY: Laars warrants parts to be free from manufacturing defects in material and workmanship for one year from date of installation. If parts are found to be defective, Laars will provide replacement of parts.

PROJECT

Customer

Scale Not to Scale

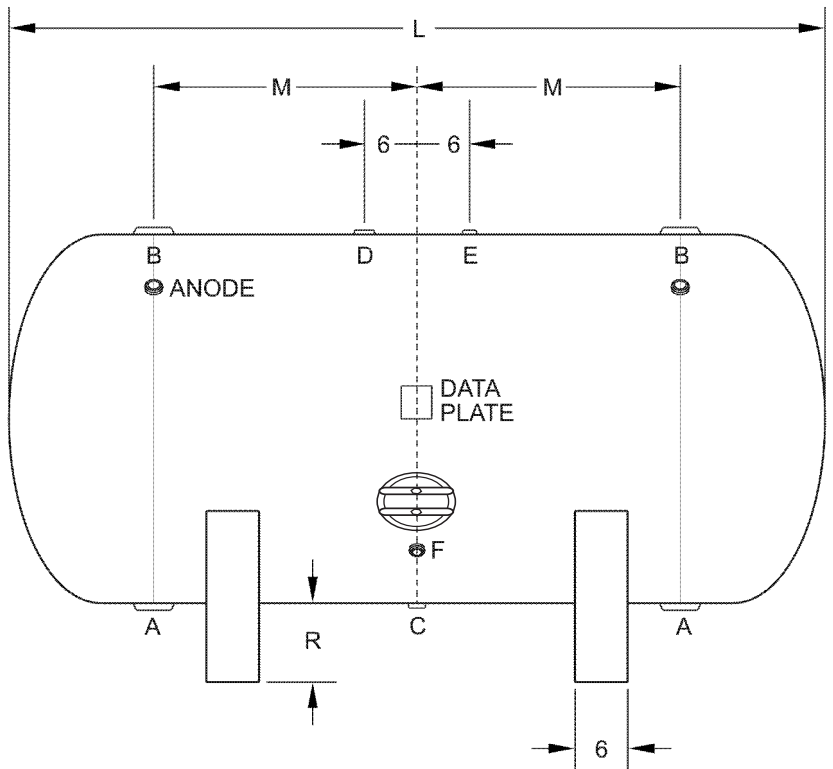
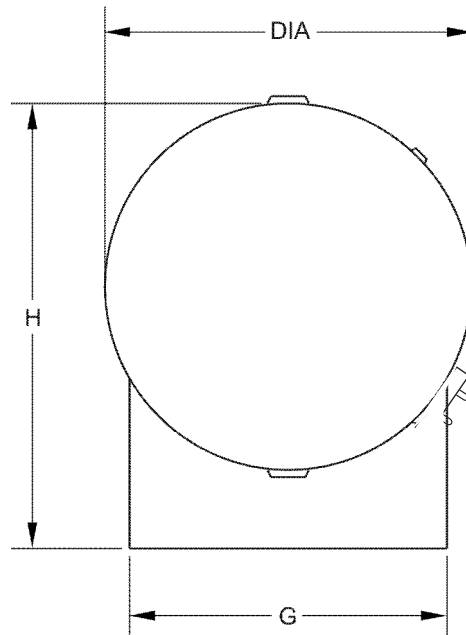
Date

Customer P.O. #

Drawing Number BH-84-162

Horizontal Storage Tank

Size: 84-162 *Submittal Data*



LAARS
Heating Systems Company
 A subsidiary of **BRADFORD WHITE** Corporation

International Sales
 1869 Sismet Road, Mississauga
 Ontario, Canada L4W 1W8
 905.238.0100 • Fax 905.366.0130

Headquarters
 20 Industrial Way, Rochester, NH 03867
Customer Service, Service Advisors
 800.900.9276 • Fax 800.559.1583

Technical Support
 603.335.6300 • Fax 603.335.3355

www.Laars.com

Litho in U.S.A. © Laars Heating Systems 1111 Document 4223A-43

DESIGN NOTES

Code	ASME IV, Part HLW
Design Pressure	125 psi
Test Pressure	125 psi

Heads	1/4" 414G
Shell	1/4" 516 Grade 70
Interior	NSF Approved
Exterior	Red Oxide Primer

Radiograph	None
Capacity	4045 gallons / 4462 nominal
Tare Weight	6009 lbs.
Support	2 Saddles

MATERIAL SPECIFICATIONS

Heads	Carbon Steel
Shell & Manway	Carbon Steel
Couplings	Carbon Steel
Anodes	Magnesium Anode Rod
Lining	Glass-Lined

OPENINGS / HEIGHTS

MARK	SIZE	DIMENSION	DESCRIPTION
A	3"		NPT Tapping
B	3"		NPT Tapping
C	1"		NPT Drain
D	1 1/4"		NPT Relief
E	3/4"		NPT Auxilliary
F	3/4"		NPT Aquastat
G		77-1/8"	Saddle Width
H		93"	Height
L		186"	Length
DIA		84"	Diameter
M		24"	NPT to Center
R		9"	Saddle to Tank

WARRANTY**FIRST THROUGH FIVE YEAR – LIMITED WARRANTY:**

Laars warrants the lined steel tank for leakage caused by defects in materials and /or workmanship for five years from date of installation. If the tank is found to be defective in manufacture, Laars will provide replacement of tank.

ONE YEAR – LIMITED WARRANTY: Laars warrants parts to be free from manufacturing defects in material and workmanship for one year from date of installation. If parts are found to be defective, Laars will provide replacement of parts.

PROJECT

Customer

Scale Not to Scale

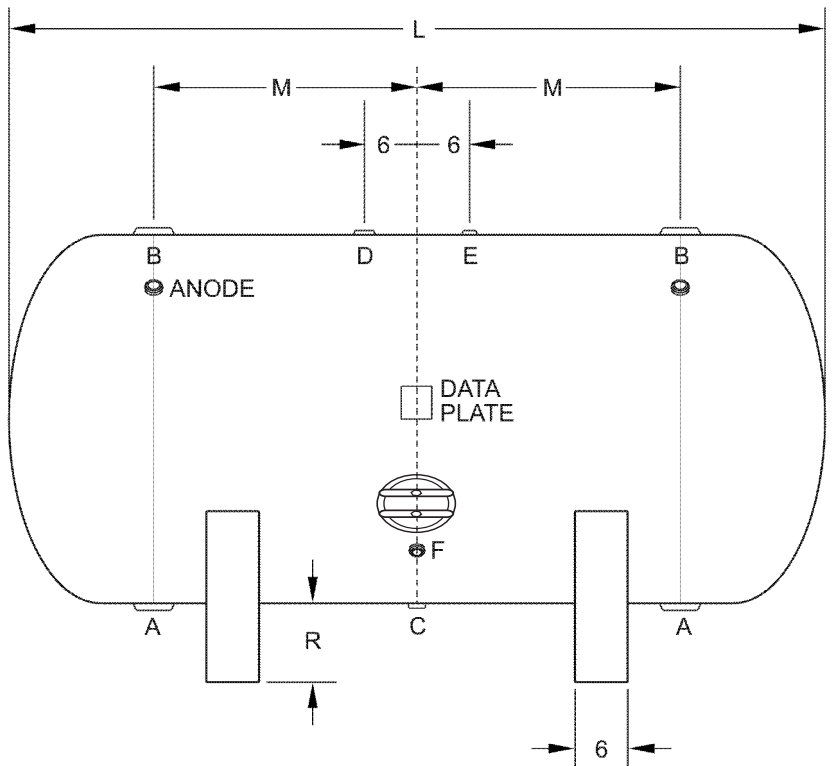
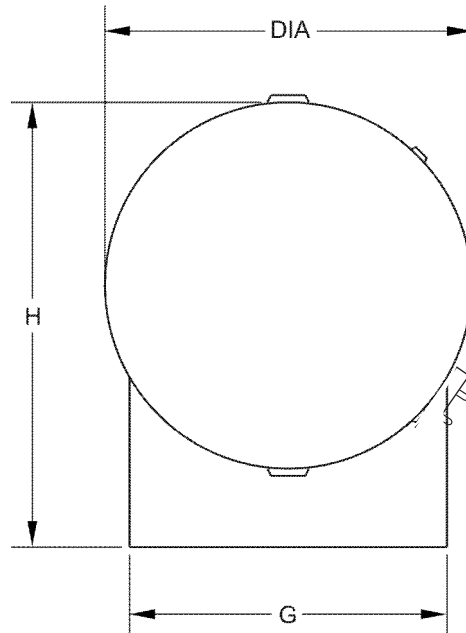
Date

Customer P.O. #

Drawing Number BH-84-186

Horizontal Storage Tank

Size: 84-186 *Submittal Data*



LAARS
Heating Systems Company
 A subsidiary of **BRADFORD WHITE** Corporation

International Sales
 1869 Sismet Road, Mississauga
 Ontario, Canada L4W 1W8
 905.238.0100 • Fax 905.366.0130

Headquarters
 20 Industrial Way, Rochester, NH 03867
Customer Service, Service Advisors
 800.900.9276 • Fax 800.559.1583

Technical Support
 603.335.6300 • Fax 603.335.3355

www.Laars.com

Litho in U.S.A. © Laars Heating Systems 1111 Document 4223A-44

DESIGN NOTES

Code	ASME IV, Part HLW
Design Pressure	125 psi
Test Pressure	125 psi

Heads	1/4" 414G
Shell	1/4" 516 Grade 70
Interior	NSF Approved
Exterior	Red Oxide Primer

Radiograph	None
Capacity	4610 gallons / 5038 nominal
Tare Weight	6889 lbs.
Support	2 Saddles

MATERIAL SPECIFICATIONS

Heads	Carbon Steel
Shell & Manway	Carbon Steel
Couplings	Carbon Steel
Anodes	Magnesium Anode Rod
Lining	Glass-Lined

OPENINGS / HEIGHTS

MARK	SIZE	DIMENSION	DESCRIPTION
A	3"		NPT Tapping
B	3"		NPT Tapping
C	1"		NPT Drain
D	1 1/4"		NPT Relief
E	3/4"		NPT Auxilliary
F	3/4"		NPT Aquastat
G		77-1/8"	Saddle Width
H		93"	Height
L		210"	Length
DIA		84"	Diameter
M		24"	NPT to Center
R		9"	Saddle to Tank

WARRANTY**FIRST THROUGH FIVE YEAR – LIMITED WARRANTY:**

Laars warrants the lined steel tank for leakage caused by defects in materials and /or workmanship for five years from date of installation. If the tank is found to be defective in manufacture, Laars will provide replacement of tank.

ONE YEAR – LIMITED WARRANTY: Laars warrants parts to be free from manufacturing defects in material and workmanship for one year from date of installation. If parts are found to be defective, Laars will provide replacement of parts.

PROJECT

Customer

Scale Not to Scale

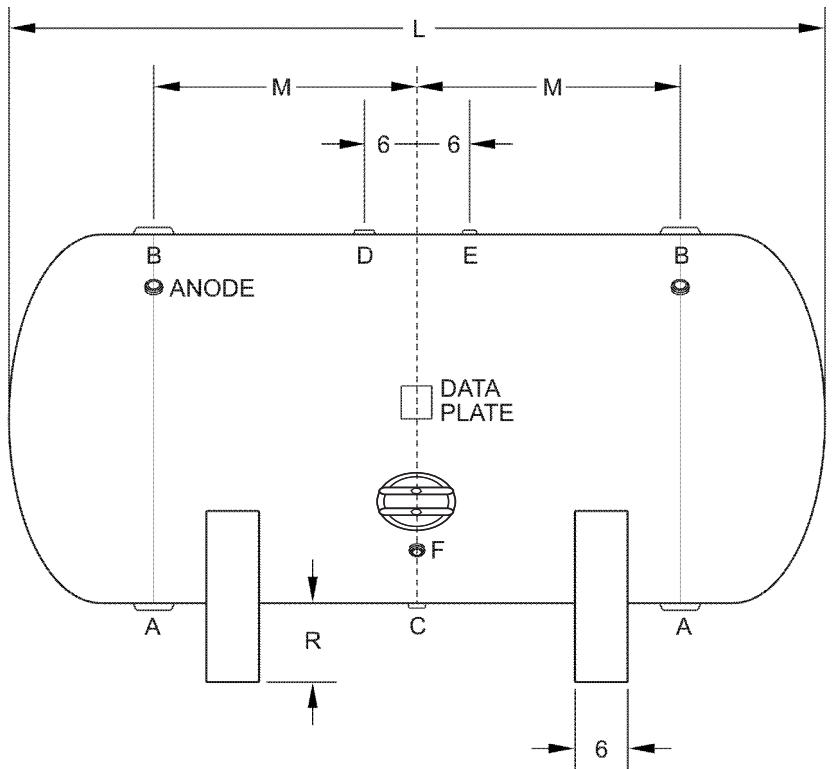
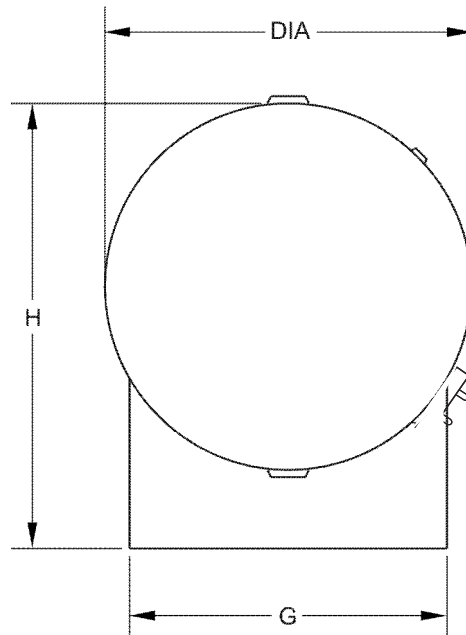
Date

Customer P.O. #

Drawing Number BH-84-210

Horizontal Storage Tank

Size: 84-210 *Submittal Data*



LAARS
Heating Systems Company
 A subsidiary of **BRADFORD WHITE** Corporation

International Sales
 1869 Sismet Road, Mississauga
 Ontario, Canada L4W 1W8
 905.238.0100 • Fax 905.366.0130

Headquarters
 20 Industrial Way, Rochester, NH 03867
Customer Service, Service Advisors
 800.900.9276 • Fax 800.559.1583

Technical Support
 603.335.6300 • Fax 603.335.3355

www.Laars.com

Litho in U.S.A. © Laars Heating Systems 1111 Document 4223A-45

DESIGN NOTES

Code	ASME IV, Part HLW
Design Pressure	125 psi
Test Pressure	125 psi

Heads	1/4" 414G
Shell	1/4" 516 Grade 70
Interior	NSF Approved
Exterior	Red Oxide Primer

Radiograph	None
Capacity	5695 gallons / 6141 nominal
Tare Weight	7994 lbs.
Support	2 Saddles

MATERIAL SPECIFICATIONS

Heads	Carbon Steel
Shell & Manway	Carbon Steel
Couplings	Carbon Steel
Anodes	Magnesium Anode Rod
Lining	Glass-Lined

OPENINGS / HEIGHTS

MARK	SIZE	DIMENSION	DESCRIPTION
A	3"		NPT Tapping
B	3"		NPT Tapping
C	1"		NPT Drain
D	1 1/4"		NPT Relief
E	3/4"		NPT Auxilliary
F	3/4"		NPT Aquastat
G		77-1/8"	Saddle Width
H		93"	Height
L		256"	Length
DIA		84"	Diameter
M		24"	NPT to Center
R		9"	Saddle to Tank

WARRANTY**FIRST THROUGH FIVE YEAR – LIMITED WARRANTY:**

Laars warrants the lined steel tank for leakage caused by defects in materials and /or workmanship for five years from date of installation. If the tank is found to be defective in manufacture, Laars will provide replacement of tank.

ONE YEAR – LIMITED WARRANTY: Laars warrants parts to be free from manufacturing defects in material and workmanship for one year from date of installation. If parts are found to be defective, Laars will provide replacement of parts.

PROJECT

Customer

Scale Not to Scale

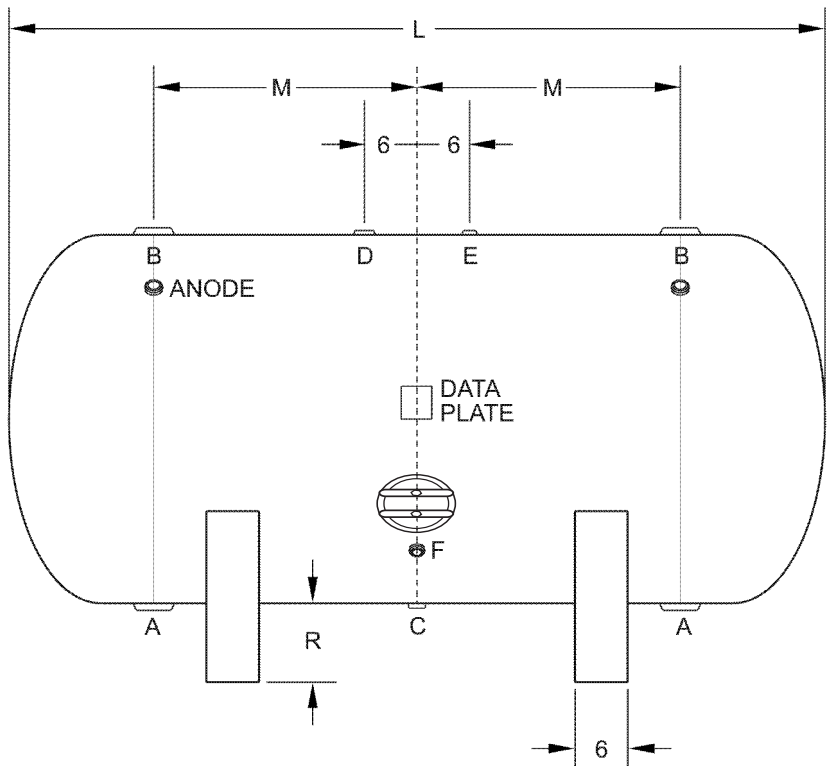
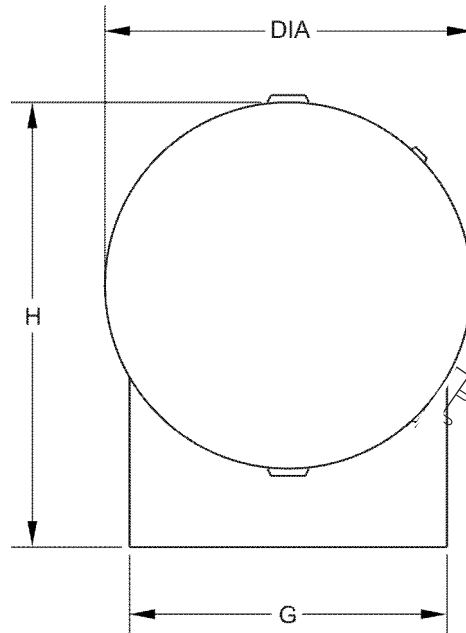
Date

Customer P.O. #

Drawing Number BH-84-256

Horizontal Storage Tank

Size: 84-256 *Submittal Data*



LAARS
Heating Systems Company
 A subsidiary of **BRADFORD WHITE** Corporation

International Sales
 1869 Sismet Road, Mississauga
 Ontario, Canada L4W 1W8
 905.238.0100 • Fax 905.366.0130

Headquarters
 20 Industrial Way, Rochester, NH 03867
Customer Service, Service Advisors
 800.900.9276 • Fax 800.559.1583

Technical Support
 603.335.6300 • Fax 603.335.3355

www.Laars.com

Litho in U.S.A. © Laars Heating Systems 1111 Document 4223A-46