

Mascot 1.330 with Indirect Water Heater

FOR YOUR SAFETY: This procedure must be performed by a professional service technician, qualified in hot water boiler installation. Improper installation could create carbon monoxide gas which could cause serious injury, property damage, or death.

Using the Mascot HT 1.330 with a Laars Stor indirect is easy. No indirect pump is needed. The Mascot has domestic priority, and uses a 3-way mixing valve to direct the factory installed pump to either heating or domestic water service.

Tank sensor kit, part #LM-71401777 (see Figure 1) comes with the ball valve to connect to the bottom of the Mascot, and the sensor to place in the tank.

Remove the brass plug (shown in Figure 2, circled in white) from the bottom of the Mascot 1.330, and replace it with the ball valve from the tank sensor kit.

Place the tank sensor in the indirect. Remove the resistor from terminals 9-10 of terminal board M2, and connect the DHW priority sensor those terminals (as shown in Figure 3).

Pipe your system as shown in Figure 4.

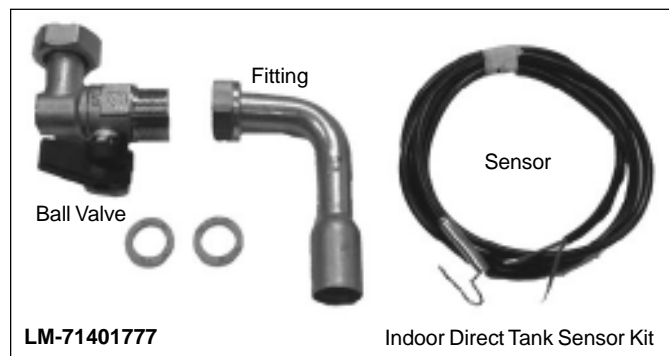


Figure 1.



Figure 2.

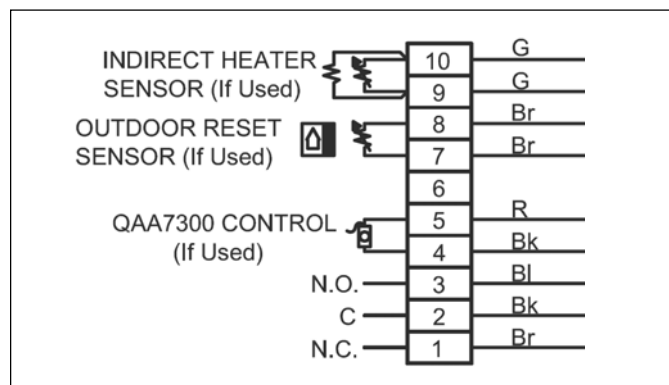


Figure 3.

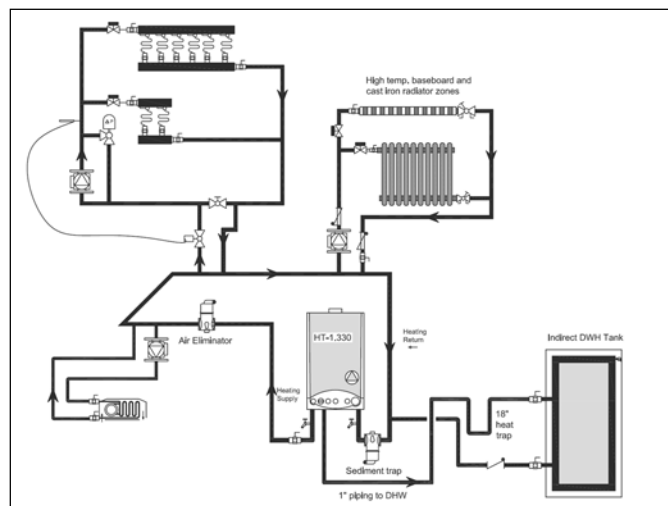


Figure 4.