

⚠ WARNING

This procedure must be performed by a professional services technician. Improper installation could lead to serious injury, property damage, or death.

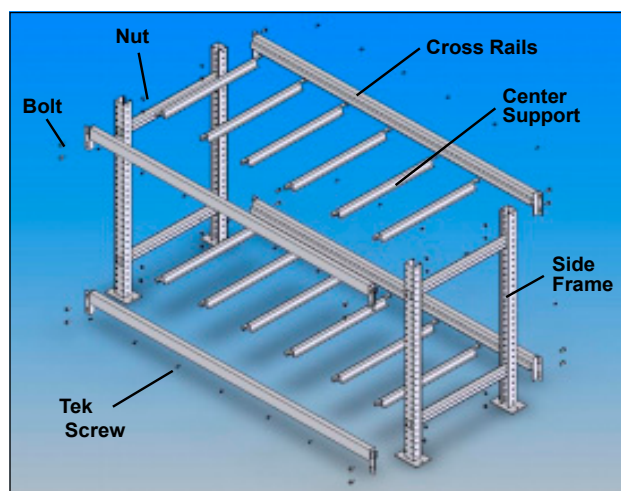
Upon receipt of the rack system, inspect all items damage and ensure that all items have been shipped (see parts list). Advise the transportation company of any shortages or damage. Any such claims should be filed with the transporter. The transporter will not accept a claim from the shipper (Laars Heating Systems).

Rack Width (inches)	Center Support Spacing (inches)	Center Support Total QTY	Center Support QTY per level	Tek Screw QTY
126	18	12	6	24
108	15	12	6	24
98	14	12	6	24
84	16 ³ / ₁₆	8	4	16
66	13 ³ / ₄	8	4	16
54	13 ¹ / ₂	6	3	12
42	15 ⁷ / ₁₆	4	2	8

Table 1. Hardware Information by Model.

Parts List (see Figure below)

- (2) Side Frames
- (4) Cross Rails
- (—) Center Supports (see Table 1 for qty required)
- (—) 1/4" x 3/4" long Tek screw, self drill & tap (see Table for qty required)
- (16) 1/2"-13 Nut
- (16) 1/2"-13 X 1" Long Bolt
- (8) 1/2"-13 Seismic Bolt
- (8) 1/2" Seismic Washer
- (8) 1/2"-13 Seismic Nut

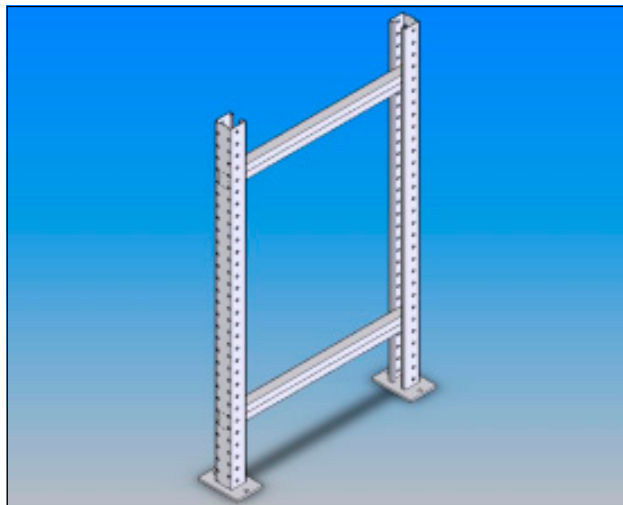


Rack Assembly Exploded View.

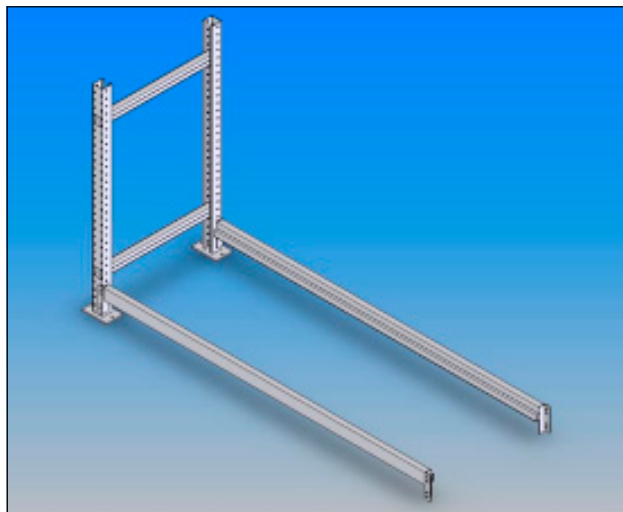
H2312800A

Part 1. Assembly of lower level.

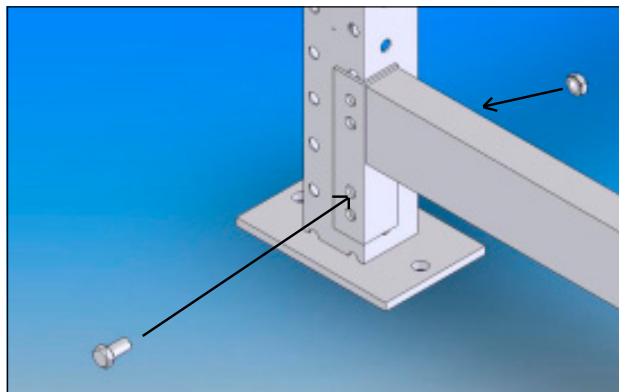
1. Place SIDE FRAME upright in desired floor location.



2. Take CROSS RAIL and place on front and back vertical beam of side frame.



3. Align the lower bolthole of the left front flange of the CROSS RAIL with the lower bolthole of the SIDE FRAME and push bolt through. Thread nut on the bolt on the inside of the SIDE FRAME vertical beam. Do not tighten nut and bolt completely. Repeat procedure for rear CROSS RAIL.

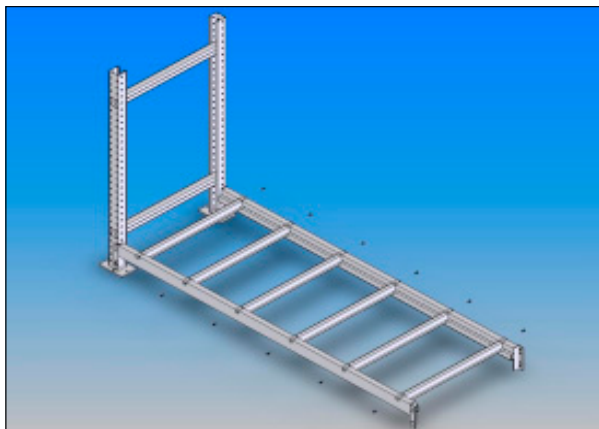


4. Place CENTER SUPPORTS between CROSS RAILS. Space evenly to fit the overall length of the appliance. See Table for spacing details.

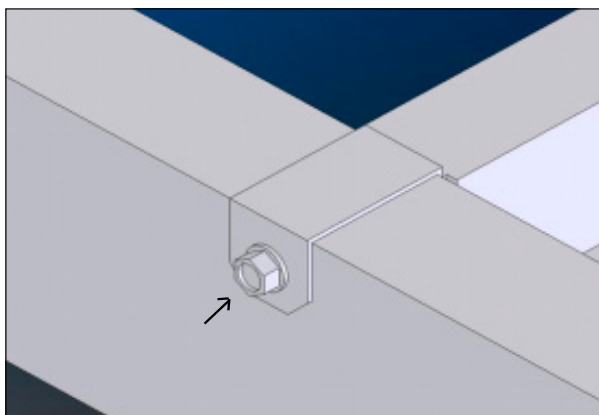
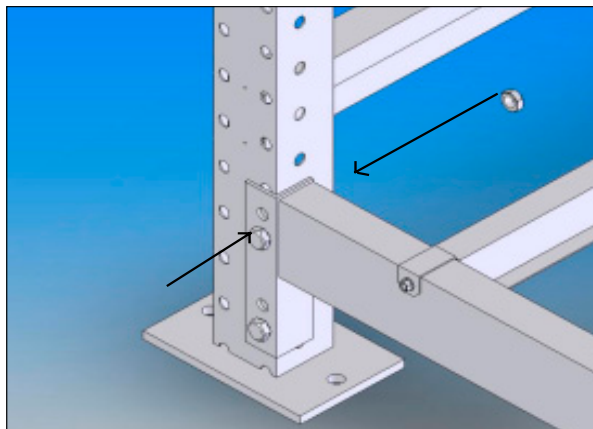


H2312800A

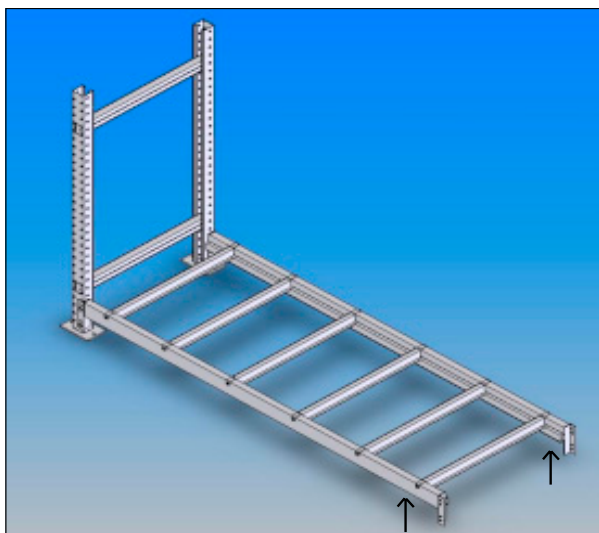
5. Secure **CENTER SUPPORT** with **TEK SCREWS** onto front and back **CROSS RAILS**. These screws are self-drilling and will require an electric drill with socket to secure into place.



7. Place the second bolt and nut into the upper exposed **CROSS RAIL** flange bolt hole and secure. Tighten both for front and back **CROSS RAILS**.



6. Block right side front and back **CROSS RAILS** to support and level the existing assembly.

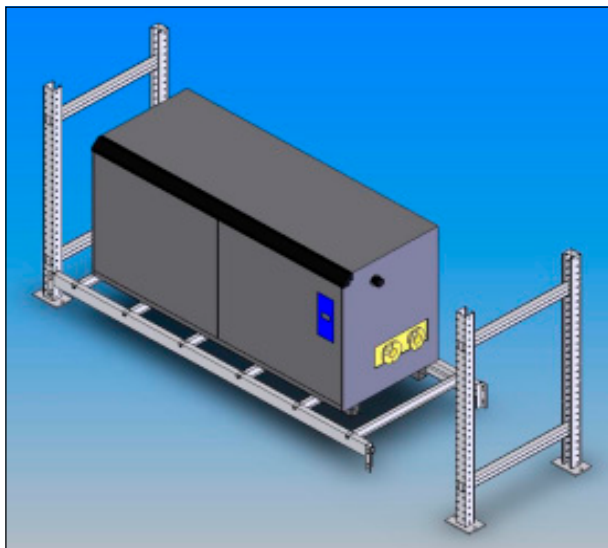


8. Lift boiler/heater onto lower rack assembly and slide into position.

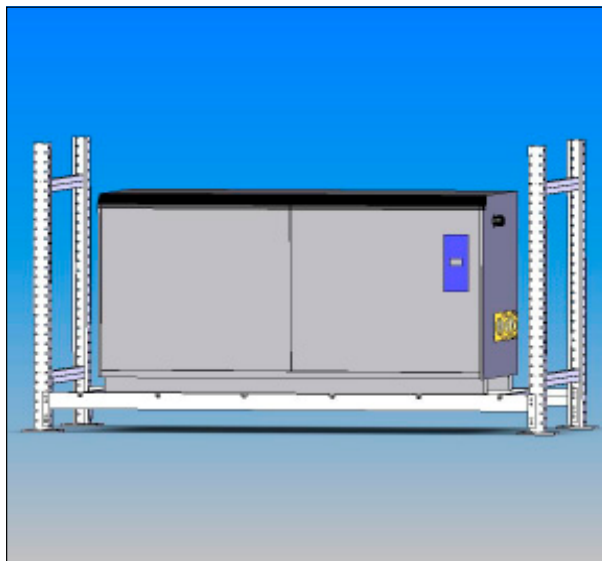


H2312800A

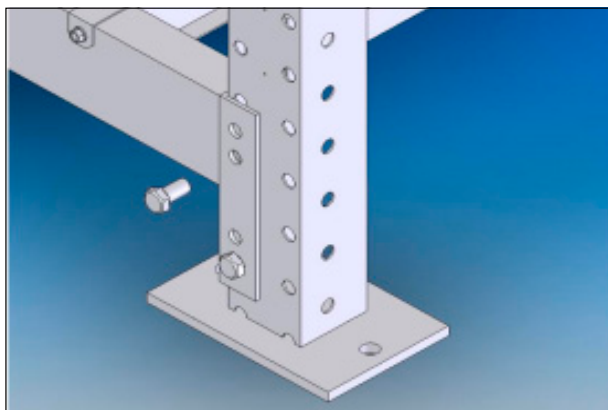
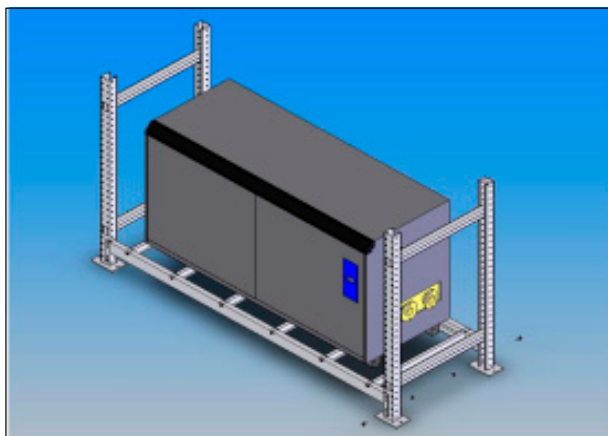
9. Take remaining SIDE FRAME and position onto right side.



11. Remove blocks from right side of CROSS RAILS. The assembly should now be free standing.



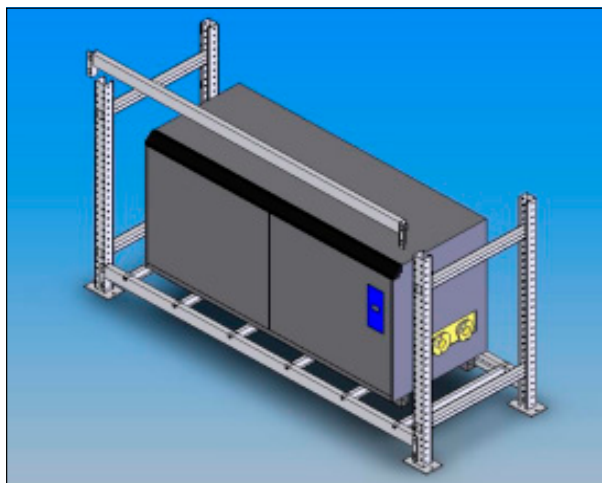
10. Align bolt holes for SIDE FRAME to CROSS RAILS and place front and back flange bolts through. Tighten nuts to bolts completely.



The lower level assembly is now complete.

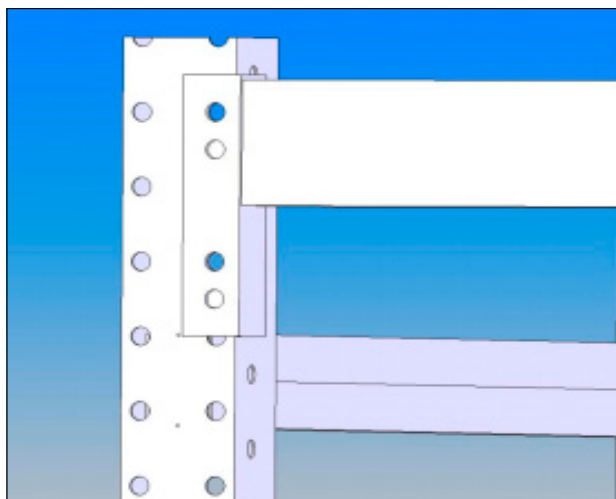
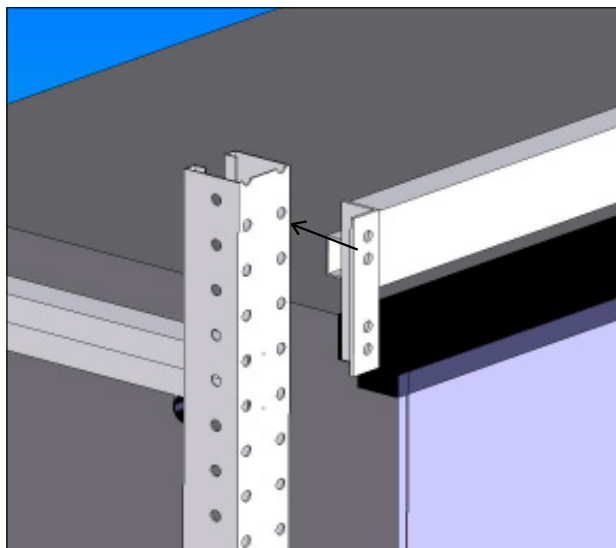
Part 2. Assembly of upper level.

1. Place upper Cross Rail in front of existing rack assembly (flat face on outside).

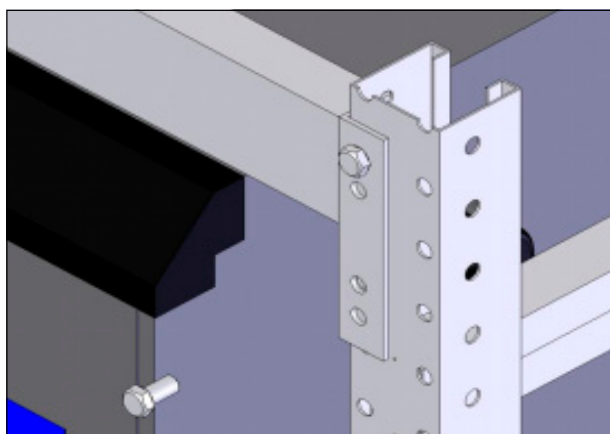
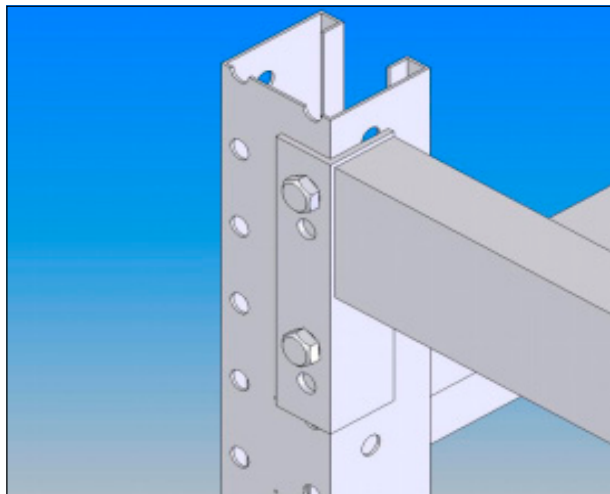


H2312800A

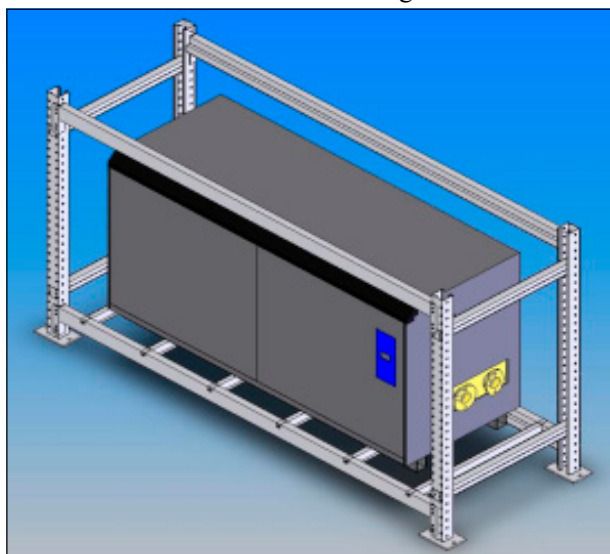
2. Position CROSS RAIL left flange upper hole aligned to second hole from top of the SIDE FRAME.



3. Secure front upper CROSS RAIL to each SIDE FRAME with bolts and nuts.

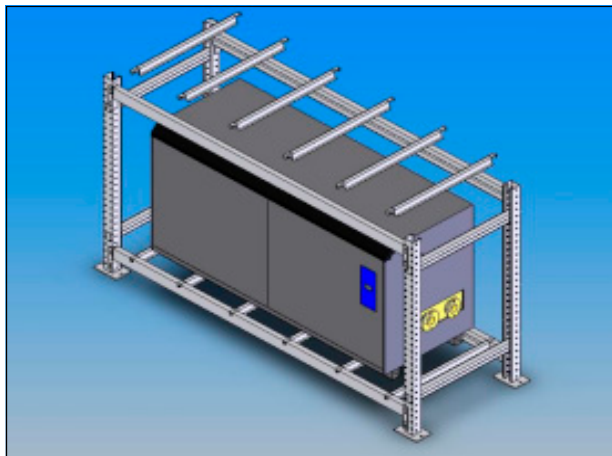


4. Repeat procedure for back CROSS RAIL and secure. BOLTS should all be tight.

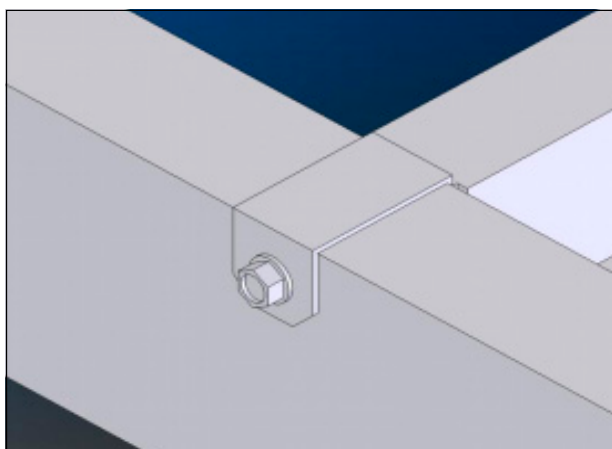
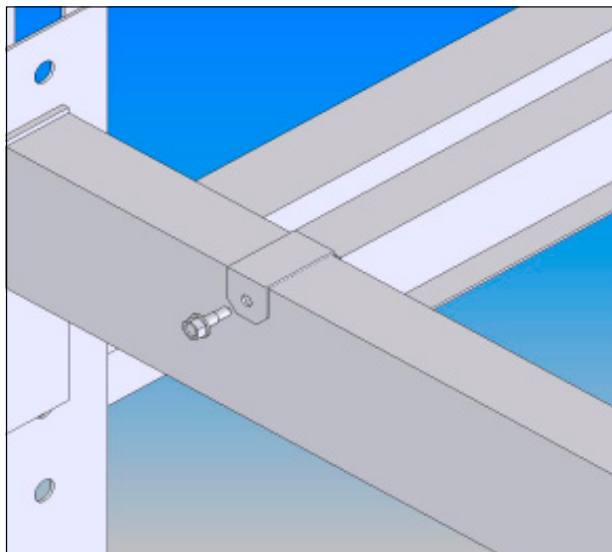


H2312800A

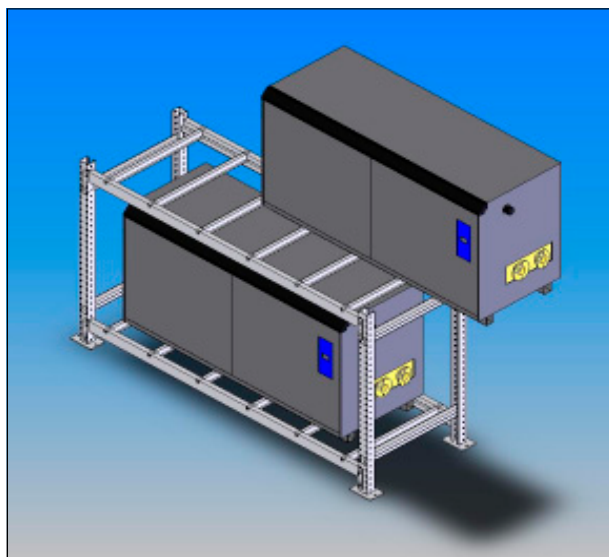
5. Place CENTER SUPPORTS of upper level and space evenly per Table.



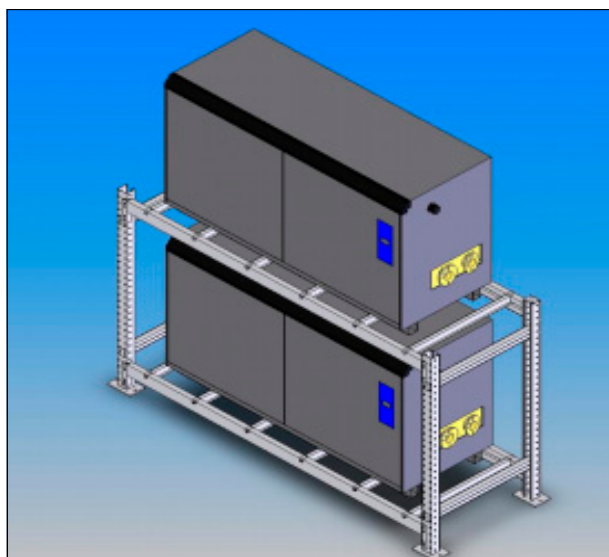
6. Secure CENTER SUPPORTS with TEK SCREWS.



7. Lift second appliance up to upper level.

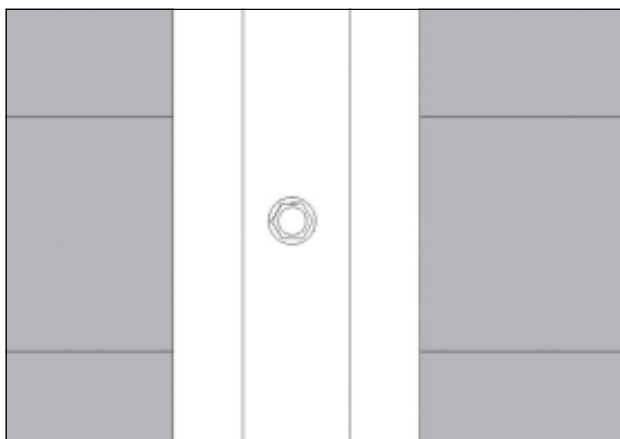
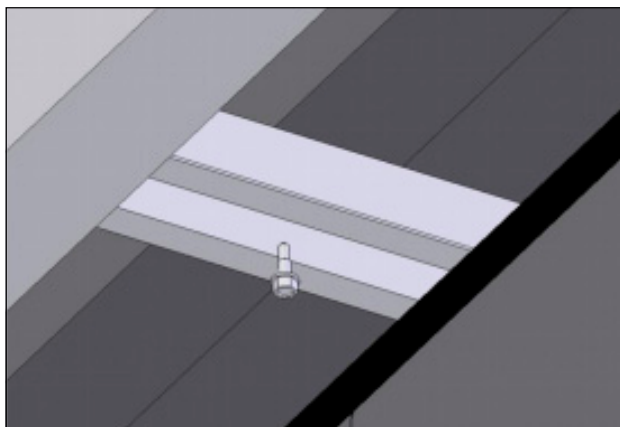
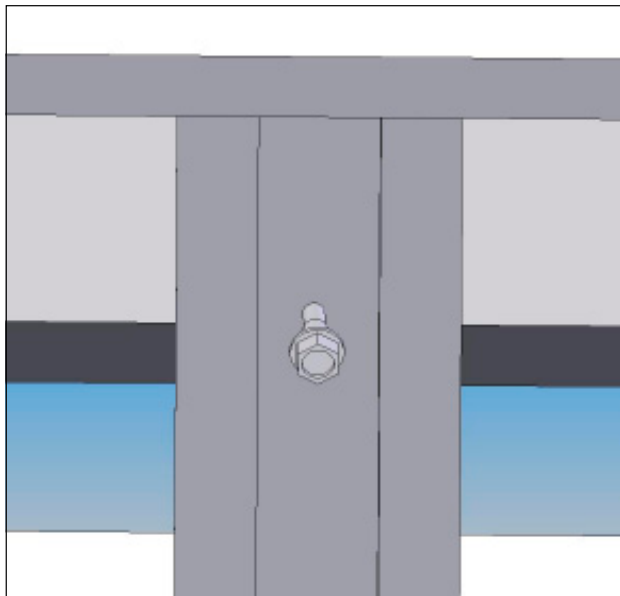


8. Lower appliance onto upper level and into desired position.

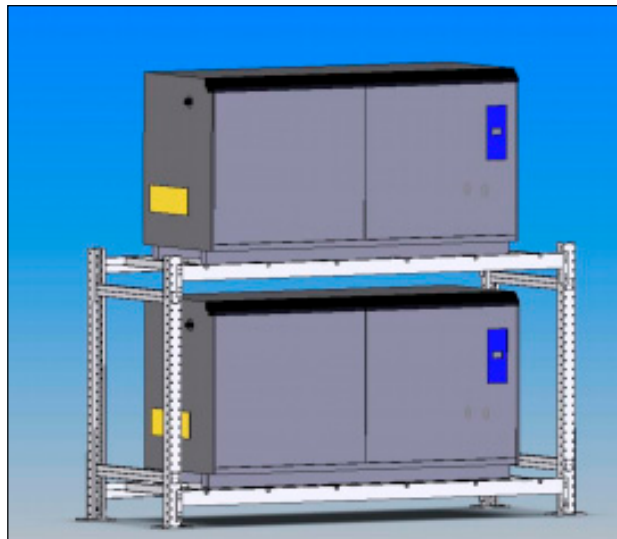


H2312800A

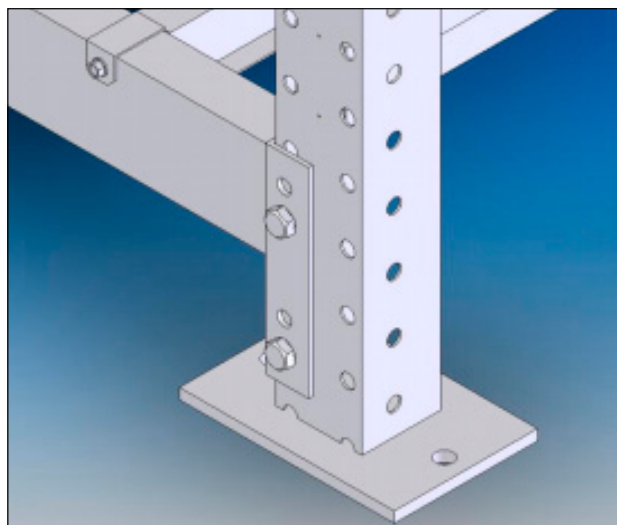
9. Secure upper appliance with TEK SCREWS to the CENTER SUPPORT, from bottom.



10. Make sure the rack is in desired position. Make any adjustment to position the assembly.

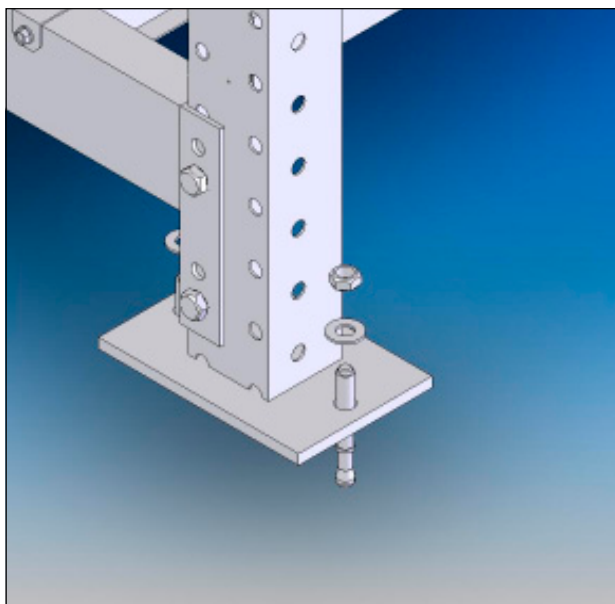


11. Drill holes for seismic hardware. Rack feet are pre-drilled and can be used to locate floor holes position.

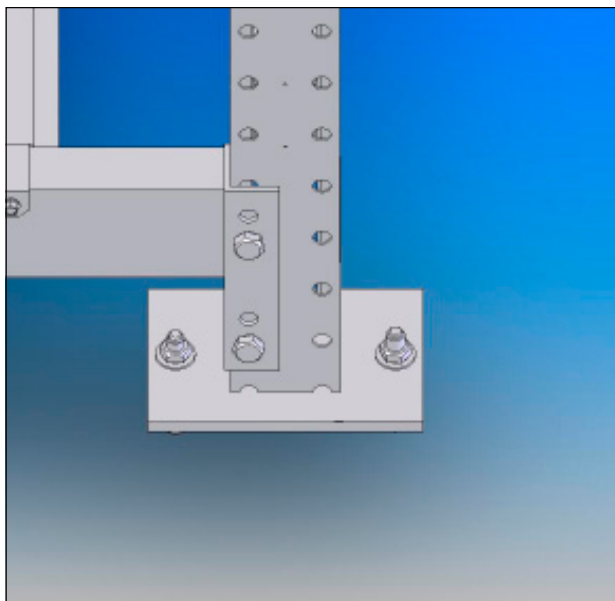


H2312800A

12. Install SEISMIC BOLTS to floor.

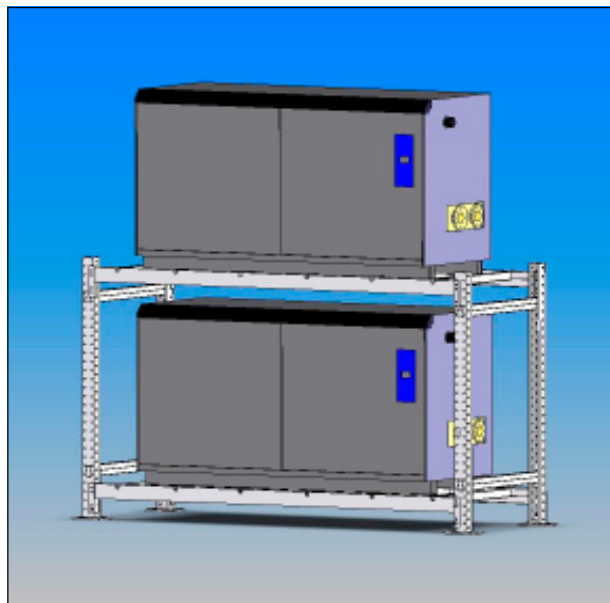


13. Secure rack to floor by tightening nuts to SEISMIC BOLTS.



The rack assembly is now complete.

The appliances may now be fitted with water piping, gas piping and venting system to accommodate the application installation.



Please refer to appliance manual for proper electrical and piping installation procedures. Also, refer to the National Fuel Gas Code and any local codes for multiple venting installation requirements.

H2312800A