

Concentric Vent Adapter

CA007200

Submittal Data

Date:

Project #:

Engineer:

Project Name:

Prepared By:

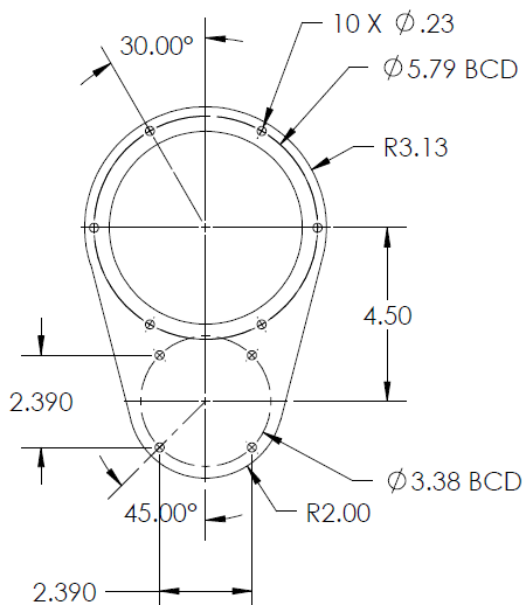
Location:

Bid Date:

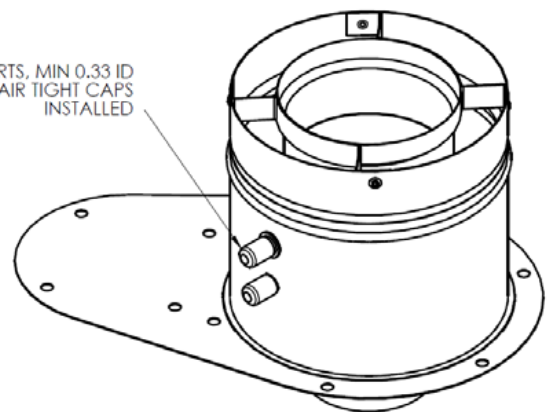
Contractor:

Features

- 3"x5" concentric vent adapter
- Two test ports
- 3" UL1738 super-ferritic stainless steel .012" inside pipe
- 5" laser-welded, paintable, aluminized steel .018" outer pipe
- Silicone O-ring seals on inner liner and outer wall
- Twist-lock connection on outer wall



2 EA PORTS, MIN 0.33 ID
PORTS SHALL HAVE AIR TIGHT CAPS
INSTALLED



Laars Heating Systems Company reserves the right to change specifications, components, features, or to discontinue products without notice.