



COMMERCIAL STORAGE TANK REPLACEMENT PARTS LIST 80, 120 and 200 Gallon Models



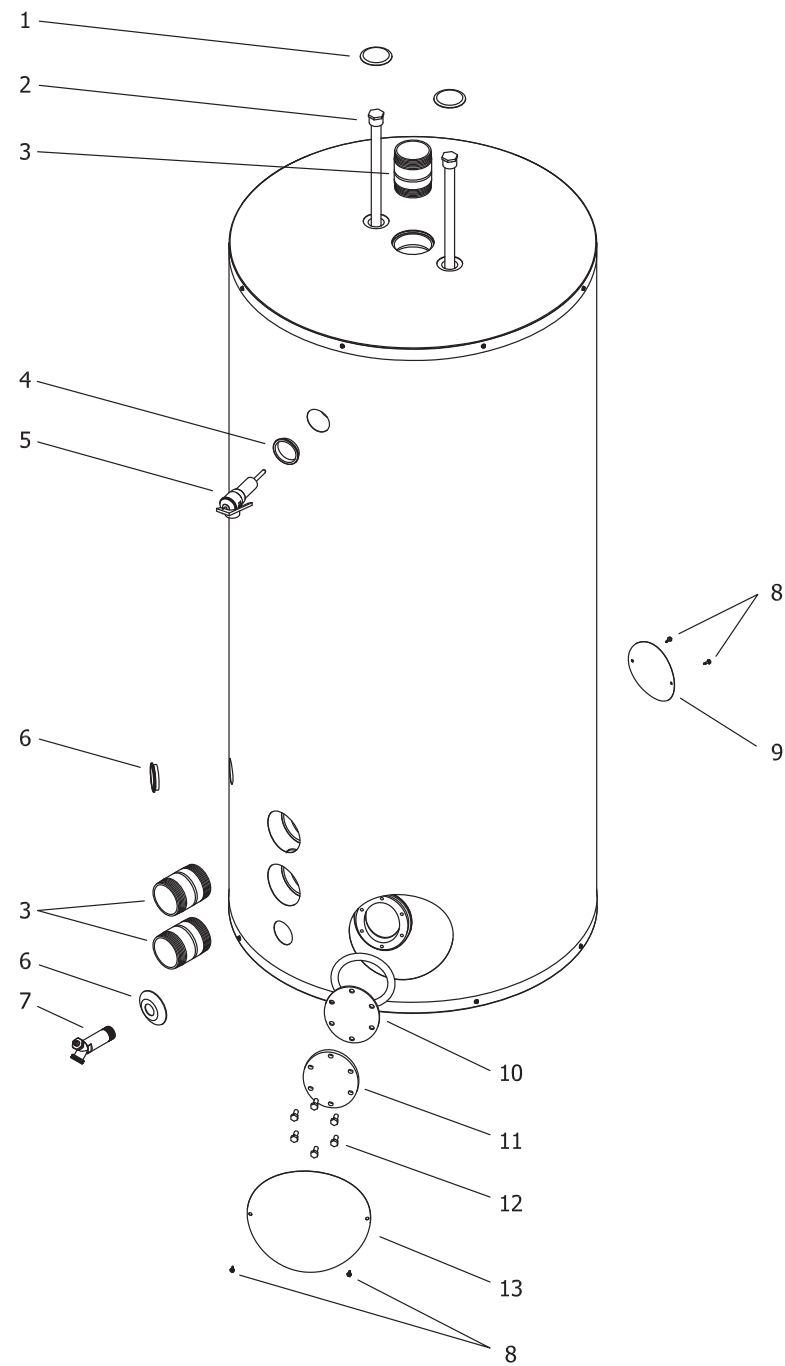
Effective: January, 2019
ECO 8240

NOTE: BOTH MODEL AND SERIAL
NUMBERS ARE REQUIRED FOR
ORDERING REPLACEMENT PARTS

Dimensions and specifications
subject to change without notice.



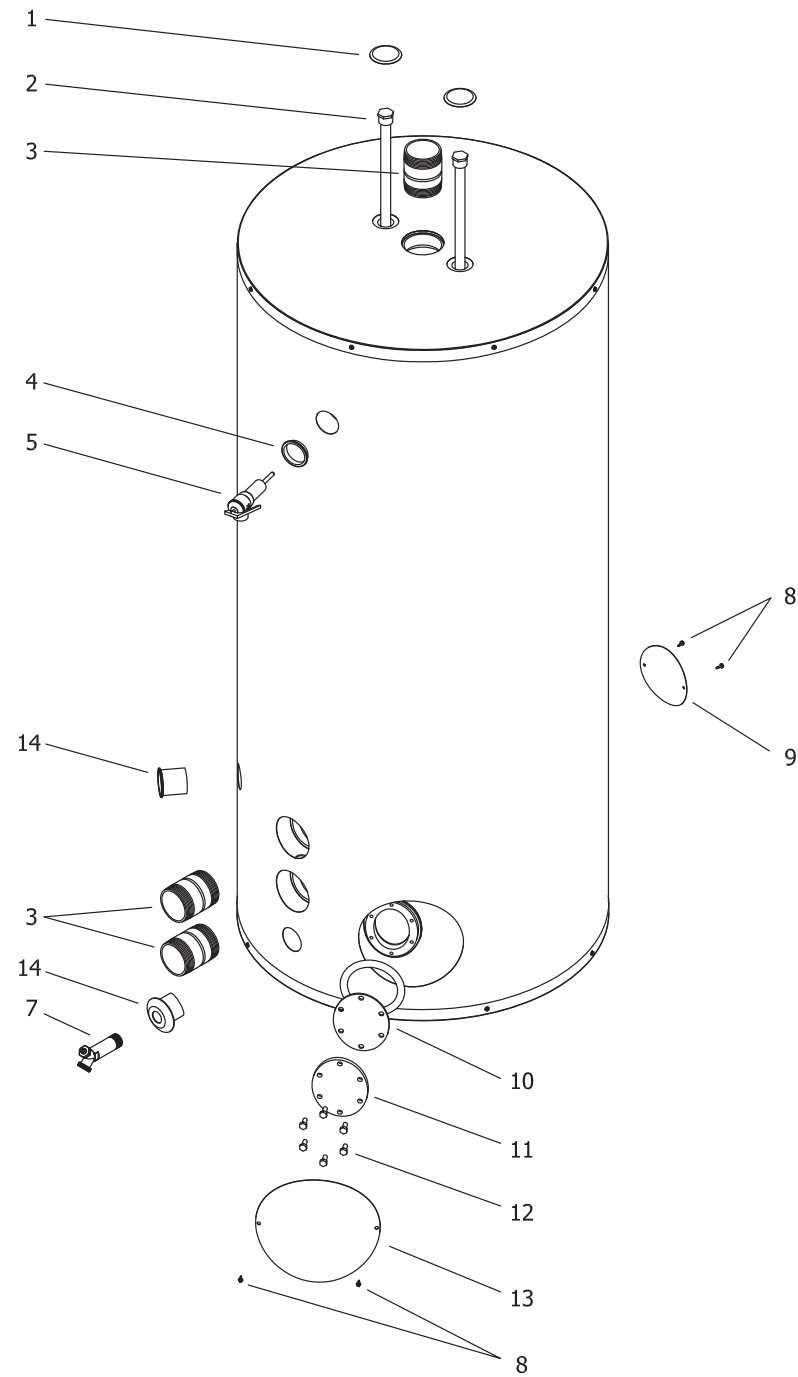
As required by the state of California Proposition 65.



Item	Description	Model A0073101	Model A0078800	Model A0070101	Model A2086000
1	Hole Closure	N/A	239-31547-02	239-31547-02	239-31547-02
2	Anode Rod (Magnesium)#	224-47782-08	224-47782-08	224-47782-08	224-47782-12
	Anode Rod (Aluminum) (Optional)#	224-47783-08	224-47783-08	224-47783-08	224-47783-08
	Anode Rod (A420) (Optional)#	224-49559-04	224-49559-04	224-49559-04	224-49559-04
3	Inlet/Outlet Nipple 2" NPT X 3 1/2	229-32762-17	229-32762-17	229-32762-17	---
	Inlet/Outlet Nipple 2 1/2" NPT X 3 1/2 (Optional)	---	229-32762-22	229-32762-22	229-32762-22
4	Trim Ring-Grey	239-32793-05	239-32793-05	239-32793-05	239-32793-05
5	T&P Relief Valve*	---	---	---	---
6	Finished Flange	239-41414-00	239-41414-00	239-41414-00	239-41414-00
7	Brass Drain Valve	265-42351-02	265-42351-04	265-42351-04	265-42351-04
8	Screw #8-18 x 1/2	239-32761-00	239-32761-00	239-32761-00	239-32761-00
9	Cover Aux.	---	243-47670-00	243-47670-00	---
10	Clean Out O-Ring Gasket	---	205-18427-00	---	---
	Clean Out Gasket (ASME)	205-32942-00	---	205-32942-00	205-32942-00
11	Clean Out Cover	---	205-18428-00	---	---
	Clean Out Cover (ASME)	205-32941-00	---	205-32941-00	205-32941-00
12	Clean Out Cover Screws	---	239-82166-00	---	---
	Clean Out Cover Screws (ASME)	239-32970-00	---	239-32970-00	239-32970-00
13	Clean Out Access Cover	243-20299-00	243-20299-00	243-20299-00	243-20299-00
14	Escutcheon-2"	---	---	---	---

* A combination temperature and pressure relief valve is required by code as a protective device. It is not normally supplied by the tank manufacturer as original equipment. It is traditionally provided by the installer and is shown here for replacement parts purposes. The T&P valve for these storage tanks must be rated for the BTU input of the heater of the system where installed. P/N 230-33630-04 T&P valve 1" NPT female thread rated for 750,000 BTU.

Anode may need to be cut to length



Item	Description	Model A0073100
1	Hole Closure	N/A
2	Anode Rod (Magnesium)#	224-47782-08
	Anode Rod (Aluminum) (Optional)#	224-47783-08
	Anode Rod (A420) (Optional)#	224-49559-04
3	Inlet/Outlet Nipple 2" NPT X 3 1/2	229-32762-17
	Inlet/Outlet Nipple 2 1/2" NPT X 3 1/2 (Optional)	---
4	Trim Ring-Grey	239-32793-05
5	T&P Relief Valve*	---
6	Finished Flange	---
7	Brass Drain Valve	265-42351-02
8	Screw #8-18 x 1/2	239-32761-00
9	Cover Aux.	---
10	Clean Out O-Ring Gasket	205-18427-00
	Clean Out Gasket (ASME)	---
11	Clean Out Cover	205-18428-00
	Clean Out Cover (ASME)	---
12	Clean Out Cover Screws	239-82166-00
	Clean Out Cover Screws (ASME)	---
13	Clean Out Access Cover	243-20299-00
14	Escutcheon-2"	239-41337-00

* A combination temperature and pressure relief valve is required by code as a protective device. It is not normally supplied by the tank manufacturer as original equipment. It is traditionally provided by the installer and is shown here for replacement parts purposes. The T&P valve for these storage tanks must be rated for the BTU input of the heater of the system where installed. P/N 230-33630-04 T&P valve 1" NPT female thread rated for 750,000 BTU.

Anode may need to be cut to length

